

# AUTOMATIC SENSOR OPERATED TAPS

Up to 70% Water Savings

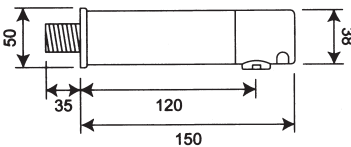
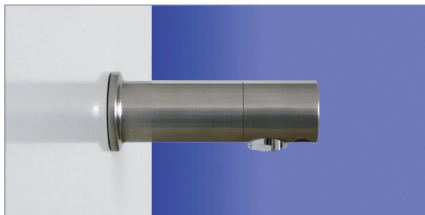
Hygienic "Touch-Free" Sensor Operation • Mains or Battery Powered Kits Available  
Water & Energy Conservation • Ideal for Disabled Facilities • Infection Control

To operate simply put your hands in front of the sensor. Remove your hands and the tap will automatically turn itself off again after a few seconds. Optional Automatic "Purge" Facility available for taps not used for long periods.

Standard flow rate is 5Lpm. Sensor taps can be supplied with lower or higher flow rates if required.

Taps come supplied with PEX lined WRAS approved flexi-hose pipes. Optional copper tails available on request.

## SSTW Wall/Panel Mounted "Auto" Sensor Operated Stainless Steel Tap

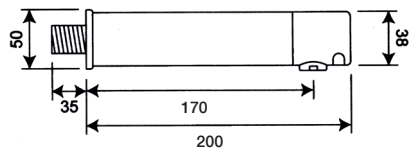
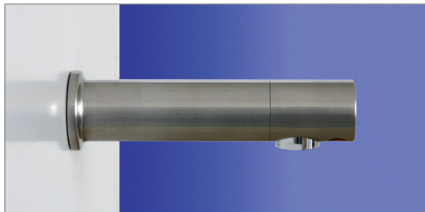


### Sensor Tap Kit

#### Order Code Description

SSTW-B/150 Battery powered stainless steel sensor tap kit.  
38mm diameter spout.

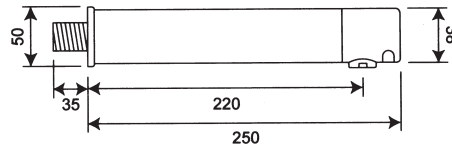
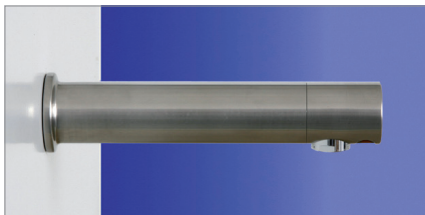
SSTW-M/150 Mains powered version.



#### Order Code Description

SSTW-B/200 Battery powered stainless steel sensor tap kit.  
38mm diameter spout.

SSTW-M/200 Mains powered version.



#### Order Code Description

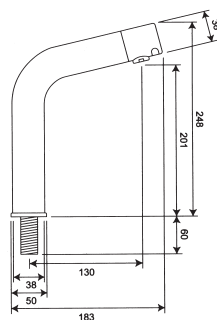
SSTW-B/250 Battery powered stainless steel sensor tap kit.  
38mm diameter spout.

SSTW-M/250 Mains powered version.

Sensor is at spout end. Tap should be fitted on wall minimum 300mm above bottom of basin (450mm minimum if basin is metallic).

## High Neck Worktop/Basin Mounted "Auto" Sensor Operated Taps

for vessel basins mounted on top of the worktop



### SSHN High-neck model

(Stainless Steel)

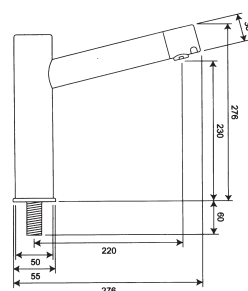
#### Sensor Tap Kit

#### Order Code Description

SSHN-B Battery powered stainless steel sensor tap kit.  
38mm diameter spout.

SSHN-M Mains powered version.

Fixing 3/4" BSP.  
(28mm Ø clearance drill hole)



### CPTHN High-neck model

(Chrome Finish)

#### Sensor Tap Kit

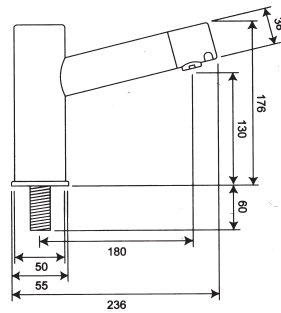
#### Order Code Description

CPTHN-B Battery powered chrome sensor tap kit.  
38mm diameter spout.

CPTHN-M Mains powered version.

Fixing 3/4" BSP.  
(28mm Ø clearance drill hole)

## Short Neck Worktop/Basin Mounted "Auto" Sensor Operated Taps

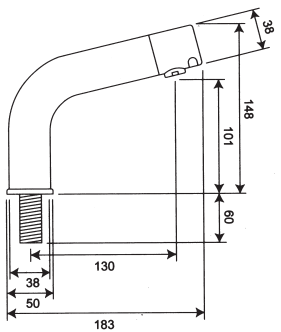


### CPTSN Short-neck model (Chrome Finish)

#### Sensor Tap Kit

##### Order Code Description

- CPTSN-B Battery powered chrome sensor tap kit.  
38mm diameter spout.
- CPTSN-M Mains powered version.  
Fixing 3/4" BSP.  
(28mm Ø clearance drill hole)



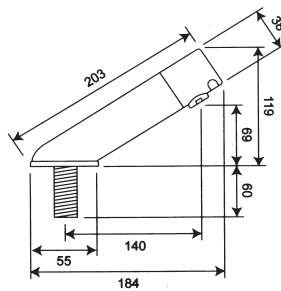
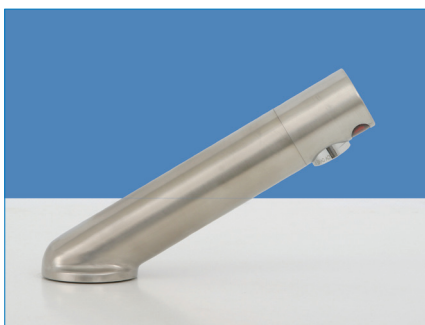
### SSSN Short-neck model (Stainless Steel)

#### Sensor Tap Kit

##### Order Code Description

- SSSN-B Battery powered stainless steel sensor tap kit.  
38mm diameter spout.
- SSSN-M Mains powered version.  
Fixing 3/4" BSP.  
(28mm Ø clearance drill hole)

## Worktop/Basin Mounted "Auto" Sensor Operated Taps

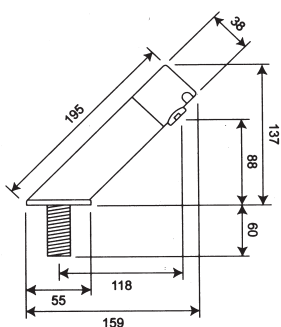
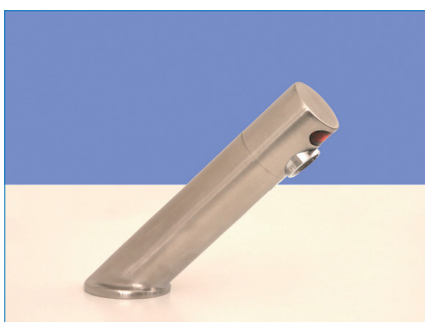


### SS32 basin or worktop model (Stainless Steel)

#### Sensor Tap Kit

##### Order Code Description

- SS32-B Battery powered stainless steel sensor tap kit.  
38mm diameter spout.
- SS32-M Mains powered version.  
Tap is at 32° angle from worktop.  
Fixing 3/4" BSP.  
(28mm Ø clearance drill hole)



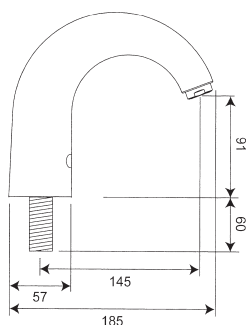
### SS45 basin or worktop model (Stainless Steel)

#### Sensor Tap Kit

##### Order Code Description

- SS45-B Battery powered stainless steel sensor tap kit.  
38mm diameter spout.
- SS45-M Mains powered version.  
Tap is at 45° angle from worktop.  
Fixing 3/4" BSP.  
(28mm Ø clearance drill hole)

## Worktop/Basin Mounted "Auto" Sensor Operated Taps (Cont.)



**CSN basin or worktop model**  
(Chrome Finish)

### Sensor Tap Kit

#### Order Code Description

CSN-B Battery powered chrome sensor tap kit.

CSN-M Mains powered version.  
Fixing 3/4" BSP.  
(28mm Ø clearance drill hole)

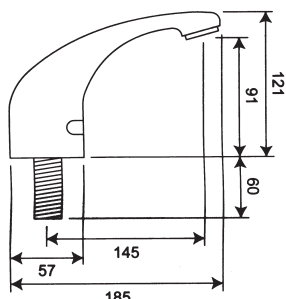
**CMT basin or worktop model**  
(Chrome Finish)

### Sensor Tap Kit

#### Order Code Description

CMT-B Battery powered chrome sensor tap kit.

CMT-M Mains powered version.  
Fixing 3/4" BSP.  
(28mm Ø clearance drill hole)



### Hand Held Programmer

#### Optional Hand Held Programmer to allow you to alter:

- water run-on time per operation
- sensitivity
- optional automatic purge facility (to help reduce dead-legs)
- optional 2 minute valve open chlorination facility
- lock-out



### For all Sensor Tap Kits

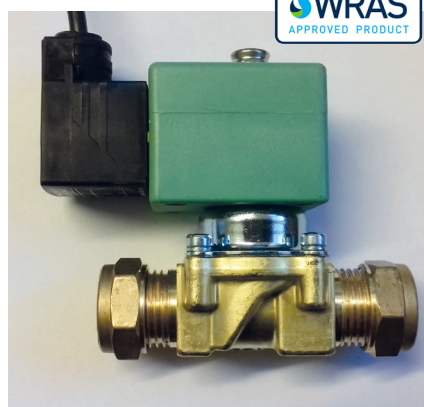
**Each tap kit c/w:** WRAS approved 15mm solenoid valve and tap with integral sensor. Battery powered models come with a separate battery pack and require no electricity supply at all. Mains powered kits come with a separate low voltage 6V dc PSU/Transformer Unit.

**Water pressure:** The standard solenoid valve is rated for water pressures of 0.75 Bar – 10 Bar, although we suggest a maximum pressure of 5 Bar. We also offer optional low pressure valves. Please contact us to discuss this option.

**Electrical requirements:** Each kit requires a 3 amp protected fused spur. If specified at time of order we can arrange the kits so you can run up to 3 taps from a single 6v Power Supply Unit.

**Stainless steel taps:** Standard finish is "brushed" stainless steel. Optional "polished" stainless steel finish also available.

**NB** Please make sure there are no lights shining (or being reflected) directly into the sensor as this can make the tap false trigger.



### Pre-wired Solenoid Valve

Standard 15mm G202 solenoid valve for water pressure 0.75 bar - 10 bar.

Optional low pressure valves also available on request.



## ROBERT PEARSON & COMPANY LTD

Post Office House, Post Office Lane  
Stockton, Warminster  
Wiltshire BA12 0SE

Telephone: (01985) 850954  
Facsimile: (01985) 850112

E-Mail: sales@robertpearson.co.uk  
Website: www.robertpearson.co.uk