



AUTOMATIC TAP, SHOWER & BATH CONTROLS

You choose the appliance and let our sensor take control

Water Saving: Adjustable valve open timer allows you to optimise water usage. Turns water off automatically after use.

Anti-Ligature & Vandal Resistant: Ideal for custodial/mental health/public & commercial applications.

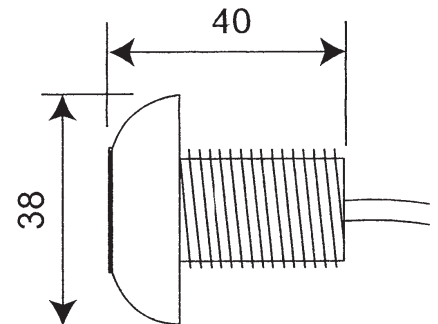
Stylish & Discreet: Designers can choose their own appliance. Sensor is fitted remotely. You can also set the system so you can activate the sensor once to turn the water on and then activate the sensor again to override the pre-set time and turn the water off immediately.

Optional Purge Facility & Optional Lock-Out Facility: "Purge Facility" allows you to set the tap to come on automatically if it has not been normally operated for more than a 24 hour period (to help prevent dead legs). "Lock-Out Facility" causes the tap/shower to stop working if the tap has been operated more than 4 times in 15 minutes (will automatically re-set itself after 15 minutes). These are only available on mains powered kits.

"No Touch" Hygienic Sensor Operation: Simply put your hand within 50mm (2") of the sensor to turn water on.

TPTS Model Tap Sensor Kits with 38mm Bezel

c/w Standard High Pressure (HP) solenoid valves; see Low Pressure (LP) options on page 4



Standard Chrome Bezel 1 Tap Kit

Mains Powered Order Code:
TPTS-M/HP/1 Tap Sensor kit

Battery Powered Order Code:
TPTS-B/HP/1 Tap Sensor kit

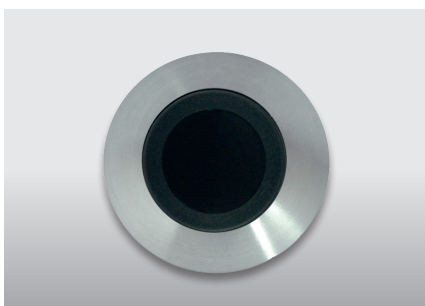
c/w 1 x Control Box
1 x 15mm Solenoid Valve
1 x Pre-wired Sensor

Standard Chrome Bezel 2 Tap Kit

Mains Powered Order Code:
TPTS-M/HP/2 Tap Sensor kit

Battery Powered Order Code:
TPTS-B/HP/2 Tap Sensor kit

c/w 1 x Control Box
2 x 15mm Solenoid Valves
2 x Pre-wired Sensors



Optional Stainless Steel 1 Tap Kit

Mains Powered Order Code:
TPTS-M/HP/SS/1 Tap Sensor kit

Battery Powered Order Code:
TPTS-B/HP/SS/1 Tap Sensor kit

c/w 1 x Control Box
1 x 15mm Solenoid Valve
1 x Pre-wired Sensor

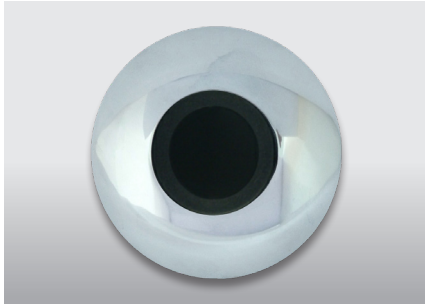
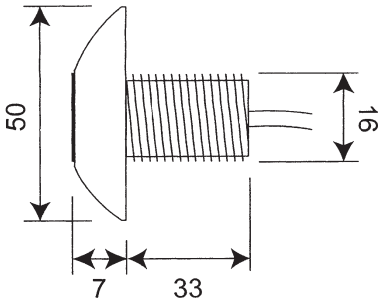
Optional Stainless Steel 2 Tap Kit

Mains Powered Order Code:
TPTS-M/HP/SS/2 Tap Sensor kit

Battery Powered Order Code:
TPTS-B/HP/SS/2 Tap Sensor kit

c/w 1 x Control Box
2 x 15mm Solenoid Valves
2 x Pre-wired Sensors

TPTS Model Tap Sensor Kits with 50mm Bezel



Standard Chrome Bezel Kit

Mains Powered Order Code:
TPTS-M/HP(50)/1 Tap Sensor kit

Battery Powered Order Code:
TPTS-B/HP(50)/1 Tap Sensor kit

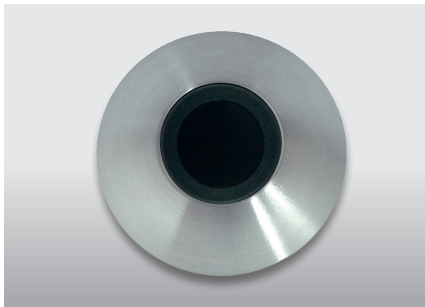
c/w 1 x Control Box
1 x 15mm Solenoid Valve
1 x Pre-wired Sensor

Standard Chrome Bezel 2 Tap Kit

Mains Powered Order Code:
TPTS-M/HP(50)/2 Tap Sensor kit

Battery Powered Order Code:
TPTS-B/HP(50)/2 Tap Sensor kit

c/w 1 x Control Box
2 x 15mm Solenoid Valves
2 x Pre-wired Sensors



Optional Stainless Steel Bezel Kit

Mains Powered Order Code:
TPTS-M/HP/SS(50)/1 Tap Sensor kit

Battery Powered Order Code:
TPTS-B/HP/SS(50)/1 Tap Sensor kit

c/w 1 x Control Box
1 x 15mm Solenoid Valve
1 x Pre-wired Sensor

Optional Stainless Steel 2 Tap Kit

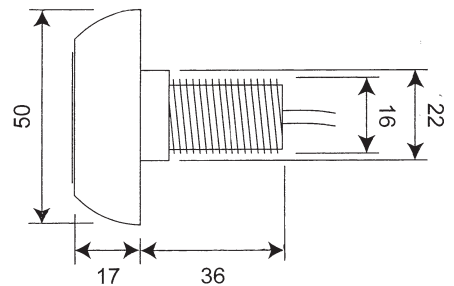
Mains Powered Order Code:
TPTS-M/HP/SS(50)/2 Tap Sensor kit

Battery Powered Order Code:
TPTS-B/HP/SS(50)/2 Tap Sensor kit

c/w 1 x Control Box
2 x 15mm Solenoid Valves
2 x Pre-wired Sensors

Waterproof TPTS Model Bath and Shower Sensor Kits

Waterproof brushed stainless steel bath/shower sensor c/w 8 metre cable



SHOWER Control- Mains powered

TPTS-M/HP/1 Shower Sensor kit
TPTS-M/HP/2 Shower Sensor kit

c/w 1 x Control Box
1 x 15mm Solenoid Valve
1 x Pre-wired Sensor

BATH Control- Mains powered

TPTS-M/HP/1 Bath Sensor kit
TPTS-M/HP/2 Bath Sensor kit

c/w 1 x Control Box
1 x 15mm Solenoid Valve
1 x Pre-wired Sensor

SHOWER Control - Battery powered

TPTS-B/HP/1 Shower Sensor kit
TPTS-B/HP/2 Shower Sensor kit

c/w 1 x Control Box
2 x 15mm Solenoid Valves
2 x Pre-wired Sensors

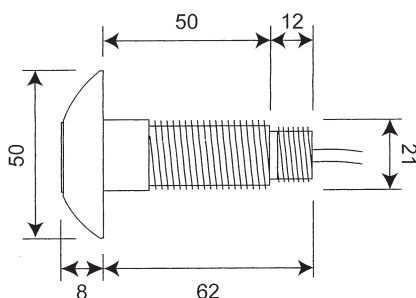
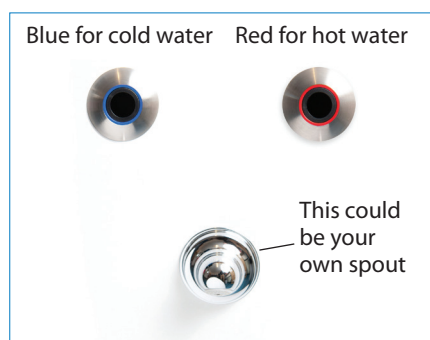
BATH Control - Battery powered

TPTS-B/HP/1 Bath Sensor kit
TPTS-B/HP/2 Bath Sensor kit

c/w 1 x Control Box
2 x 15mm Solenoid Valves
2 x Pre-wired Sensors

Special AV Tap Sensors

For applications that require separate hot and cold supplies per basin please use special colour coded AV Sensors

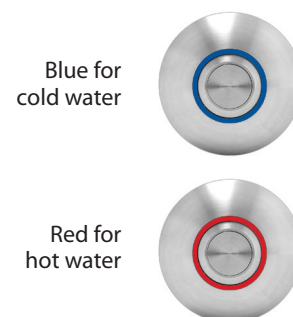
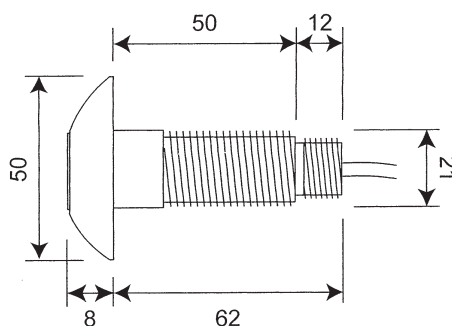


Mains Powered Order Code:
TPTS-M/HP/2 Tap AV Sensor Kit

Battery Powered Order Code:
TPTS-B/HP/2 Tap AV Sensor Kit
c/w 1 x Control Box
2 x 15mm Solenoid Valves
1 Red and 1 Blue Stainless Steel Sensor
to denote hot and cold water

Electronic Touchpad Switch Operation

Simply press the stainless steel Touchpad Switch to turn water on



Electronic Touchpad c/w 3 metre cable. Available with blue insert for cold water; red insert for hot water

Touchpad Kit Order Codes

c/w Standard High Pressure (HP) solenoid valves; see Low Pressure (LP) options on page 4

TAP Control – Mains powered

TPTS-M/HP/1 Tap Touchpad kit
TPTS-M/HP/2 Tap Touchpad kit

TAP Control – Battery powered

TPTS-B/HP/1 Tap Touchpad kit
TPTS-B/HP/2 Tap Touchpad kit

SHOWER Control– Mains powered

TPTS-M/HP/1 Shower Touchpad kit
TPTS-M/HP/2 Shower Touchpad kit

SHOWER Control – Battery powered

TPTS-B/HP/1 Shower Touchpad kit
TPTS-B/HP/2 Shower Touchpad kit

BATH Control– Mains powered

TPTS-M/HP/1 Bath Touchpad kit
TPTS-M/HP/2 Bath Touchpad kit

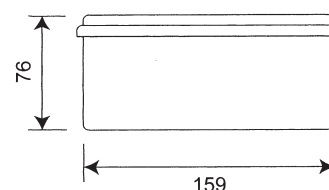
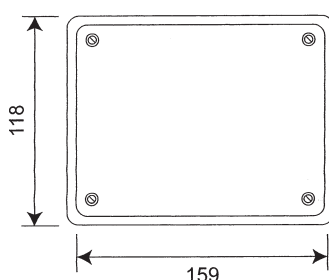
BATH Control – Battery powered

TPTS-B/HP/1 Bath Touchpad kit
TPTS-B/HP/2 Bath Touchpad kit

1 touchpad kit = 1 x control box, 1 x 15mm WRAS approved solenoid valve, 1 x pre-wired touchpad switch
2 touchpad kit = 1 x control box, 2 x 15mm WRAS approved solenoid valves, 2 x pre-wired touchpad switches

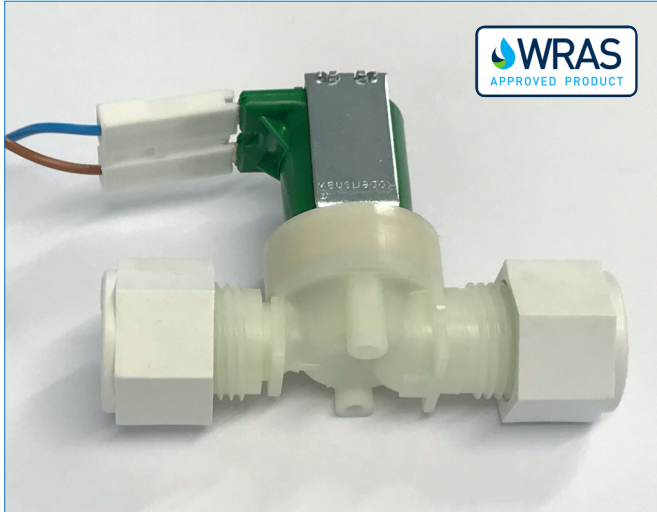
Control Box

Control Box	Adjustable Valve Open Time
Tap	6 seconds – 20 seconds
Shower	30 seconds – 3 minutes
Bath	1 minute – 10 minutes



WRAS approved Solenoid Valves/ Water Pressure

Please specify correct solenoid valves for your site conditions

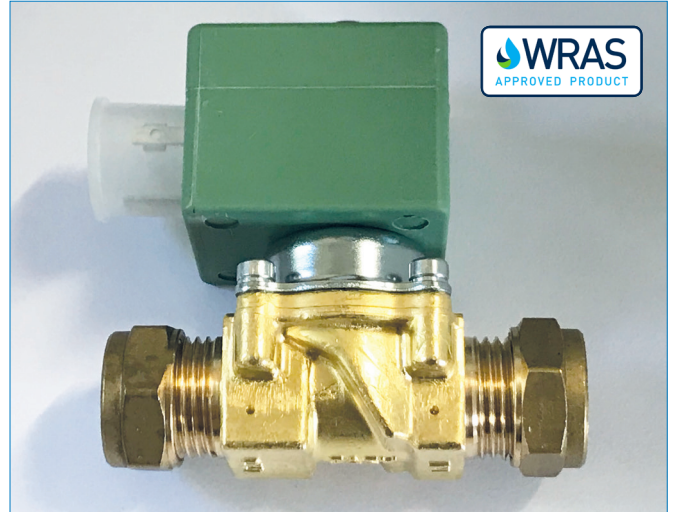


Standard HP (high pressure) 12v nylon pre-wired 15mm solenoid valve for mains powered kits.

Mains powered kits

Standard High Pressure (HP) 12v solenoid valves are rated for water pressure 0.5 bar – 6 bar

Optional Low Pressure (LP) 12v solenoid valves are rated for water pressure 0 bar – 0.5 bar



Standard HP (high pressure) 6v non-wired G202 solenoid valve for battery powered kits.

Battery powered kits

Standard High Pressure (HP) 6v solenoid valves are rated for water pressure 0.75 bar – 10 bar

Optional Low Pressure (LP) 6v solenoid valves are rated for water pressure 0 bar – 2 bar

Optional Very Low Pressure (VLP) 6v solenoid valves are rated for water pressure 0 bar – 0.5 bar

Special Options – Please call to discuss these options before ordering

a) If you want, you can mix control boxes. EG if you want a shower control kit with a longer than 3 minute valve open time, you can use a Bath control box which allows you up to a 10 minute valve open time.

b) It is possible to use 1 No. sensor to control 2 No. solenoid valves using a single control box.

c) If fitting sensor/touchpad through a thick (brick) wall, we can supply optional extension threads to screw onto the sensor/touchpad to make the overall thread long enough to fit through the wall. Please confirm total wall thickness when enquiring.



ROBERT PEARSON & COMPANY LTD

Post Office House, Post Office Lane
Stockton, Warminster
Wiltshire BA12 0SE

Telephone: (01985) 850954

Facsimile: (01985) 850112

E-Mail: sales@robertpearson.co.uk

Website: www.robertpearson.co.uk