

WATER SAVING “NO TOUCH” URINAL FLUSHVALVES

Water savings of over 90% have been achieved

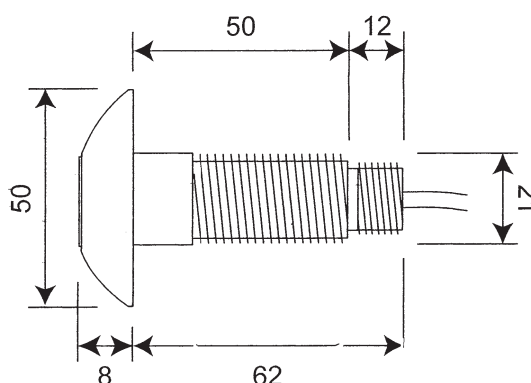
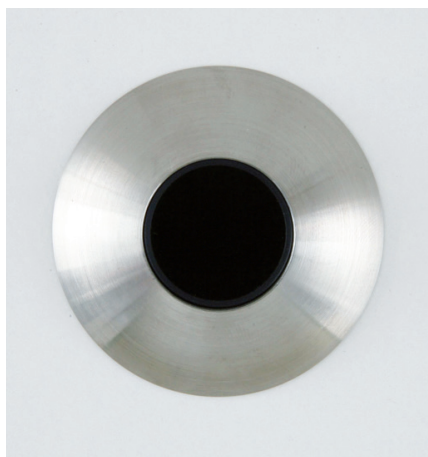
Can help achieve BREEAM Credits*

*BREEAM is a registered trade mark of the BRE Group and is used by permission. Robert Pearson & Company Ltd and its products are not affiliated, endorsed or certified by BRE Global or its affiliates. All rights are reserved.

All urinal bowls are fitted with an individual presence detector which is recessed into the panel directly above each urinal bowl, and thus only the urinal bowl that has actually been used will get flushed. Flushing will only occur if a person has been constantly detected by the sensor for at least 10 seconds (this is to prevent false triggering if someone just walks down the line of urinal bowls) and the flush happens within a few seconds of that person walking away out of detection range of the sensor. Optional programmable automatic hygiene flush.

Standard Domed 50mm Stainless Steel Sensor

Optional chrome domed bezel available on request.



HP Mains Powered Kits

SBUFC(V2)-M/HP/1 Bowl Kit

1 × Control Box, 1 × 15mm Solenoid Valve, 1 × Pre-wired Sensor

SBUFC(V2)-M/HP/2 Bowl Kit

1 × Control Box, 2 × 15mm Solenoid Valves, 2 × Pre-wired Sensors

Standard HP (high pressure) 12v solenoid valves are suitable for water pressure 0.5 Bar – 6 Bar.

See plumbing guidelines on our website.

Optional LP Mains Powered Kits

SBUFC(V2)-M/LP/1 Bowl Kit

1 × Control Box, 1 × 15mm Solenoid Valve, 1 × Pre-wired Sensor

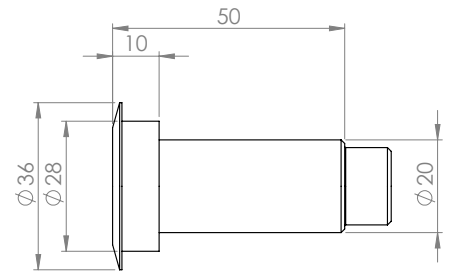
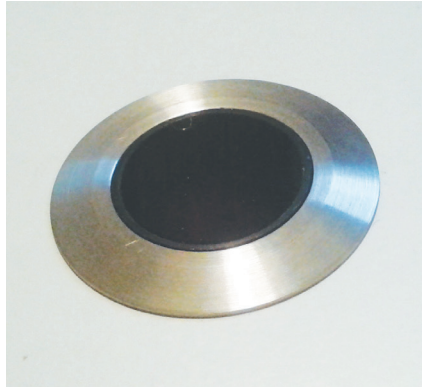
SBUFC(V2)-M/LP/2 Bowl Kit

1 × Control Box, 2 × 15mm Solenoid Valves, 2 × Pre-wired Sensors

Optional LP (low pressure) 12v solenoid valves for water pressure 0 Bar – 0.5 Bar maximum.

See plumbing guidelines on our website.

Special Flat 36mm Stainless Steel Sensor



HP Mains Powered Kits

SBUFC(V2)-M/HP/36mm/1 Bowl Kit

1 × Control Box, 1 × 15mm Solenoid Valve, 1 × Pre-wired Sensor

SBUFC(V2)-M/HP/36mm/2 Bowl Kit

1 × Control Box, 2 × 15mm Solenoid Valves, 2 × Pre-wired Sensors

Standard HP (high pressure) 12v solenoid valves are suitable for water pressure 0.5 Bar – 6 Bar.

See plumbing guidelines on our website.

Optional LP Mains Powered Kits

SBUFC(V2)-M/LP/36mm/1 Bowl Kit

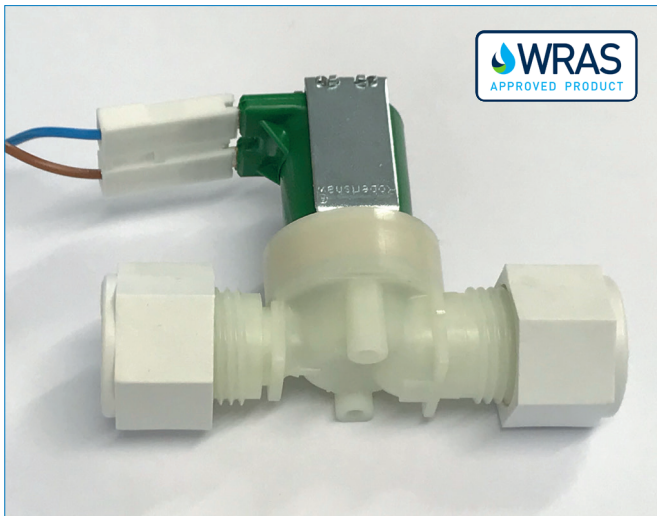
1 × Control Box, 1 × 15mm Solenoid Valve, 1 × Pre-wired Sensor

SBUFC(V2)-M/LP/36mm/2 Bowl Kit

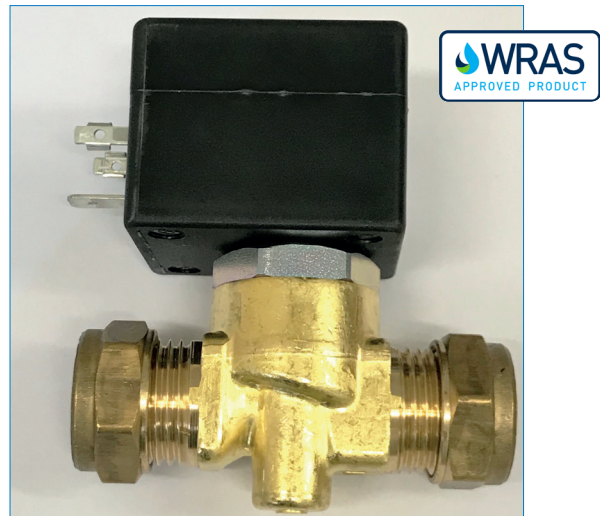
1 × Control Box, 2 × 15mm Solenoid Valves, 2 × Pre-wired Sensors

Optional LP (low pressure) 12v solenoid valves for water pressure 0 Bar – 0.5 Bar maximum.

See plumbing guidelines on our website.



Standard HP (high pressure) 12v nylon 15mm solenoid valve.



Optional LP (low pressure) 12v 7.1mm solenoid valve



ROBERT PEARSON & COMPANY LTD

Post Office House, Post Office Lane
Stockton, Warminster
Wiltshire BA12 0SE

Telephone: (01985) 850954

Facsimile: (01985) 850112

E-Mail: sales@robertpearson.co.uk

Website: www.robertpearson.co.uk