

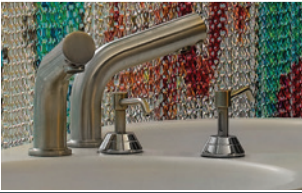
Robert Pearson & Company Ltd.

Water & Energy Saving Solutions

Product Guide 2018



Sensor Taps



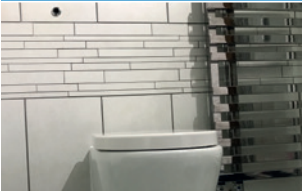
Ligature Resistant Taps



Tap Sensors



Sensor WC Flush



Programmable Sensors



Sensor Urinal Flushvalves



PIR Controlled Urinals



Sanitary Shut Off Valves



PIR Switches



Security Sanitaryware



Limescale Control



Water Flow Regulators



Hygienic 'No Touch' Washroom Controls

Contents

PIR Water Shut Off	Page 1
<i>Normally Closed Solenoid Valves</i>	<i>Page 1</i>
<i>PIR Switches</i>	<i>Page 1</i>
Remote Controls for WC Flushvalve Systems	Pages 2–3
<i>No-Touch Sensor WC Flush</i>	<i>Page 2</i>
<i>Electronic Touchpad WC Flush</i>	<i>Page 3</i>
NEW <i>Programmable “Auto” WC Sensor</i>	<i>Page 3</i>
Sensor Operated Individual Urinal Flushvalves	Page 4
NEW <i>Programmable Panel Mounted Urinal Sensor</i>	<i>Page 4</i>
PIR Urinal Flush Controls	Page 5
Thermostatic Mixing Valves	Page 5
No-Touch Sensor Operated Taps	Pages 6–7
NEW Panel Mounted Stainless Steel Tap Spouts	Page 8
Remote Controls for Taps and Showers	Pages 9–10
<i>No-Touch Sensor Operation</i>	<i>Page 9</i>
<i>Touchpad Sensor Operation</i>	<i>Page 10</i>
<i>Waterproof Shower Sensor Control</i>	<i>Page 10</i>
NEW Programmable Sensor for your own Tap Spouts and Showerheads	Pages 11–12
Tower Showers made from Stainless Steel	Page 13
Anti-Ligature and/or Vandal-Resistant Tap Spouts and Showerheads	Pages 14–15
Manually Adjustable Temperature Blending Valve	Page 15
High Security Sanitaryware for Custodial and Mental Health Applications	Pages 16–18
Hydroflow Water Conditioners	Page 19
Water Saving Flow Regulators	Pages 20–21

Proximity Detection Water “Shut-off” Valves

- Can help achieve BREEAM Wat 4 Credits
- Ensures water supply (+ lighting etc.) is turned OFF when the room is empty (and *vice versa*)
- Helps save water normally wasted from faulty, leaking or vandalised ballvalves, taps etc.
- PIRs as below. Solenoid valves available up to 2” size

“Normally Closed” Solenoid Valves



- 230v standard (optional 24v on request)
- ½” – 2” size valves available.
- Suitable for water temperatures up to 80° C
- **Optional valves with manual override**
- Optional low pressure valves available on request
- **Optional normally open valves also available**

PIR Occupancy Switch Lighting Controls

- Turns lights/valves *etc* ON automatically when the room becomes occupied, then ensures lights/valves *etc* are turned OFF when the room is empty
- **Up to 70% energy savings**
- Will switch any lighting load up to 6amps or 1500w or any motor load up to 1amp or 250w
- Adjustable time overrun from 10 seconds to 40 minutes—adjustable “Lux” sensor



Ceiling Recessed PIR Switch
Order Code: PIR/D/REC



Ceiling Mounted PIR Switch
Order Code: PIR/D/SM



Wall Mounted PIR Switch
Order Code: PIR/D/WM

Swipe Type “No-Touch” Sensor WC Flush



- Anti-ligature vandal resistant “No-touch” Sensor WC Flushvalve system
- **Up to 50% water savings compared to some conventional siphonic flushing systems**
- No mechanical handles or linkages to break— helps reduce maintenance
- Simply swipe your hand within 2” (50mm) of the sensor to activate flush

Each Kit comes with 1 x pre-wired Flushing Valve, 1 x Control Box and 1 x pre-wired Sensor.

Mains powered and Battery powered kits available.

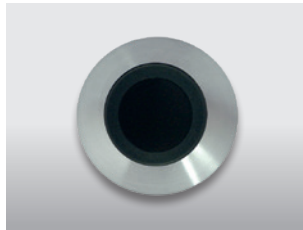
Optional stainless steel bezels also available



38mm Chrome Bezel Kit

Mains Powered Order Code:
WCFV-io

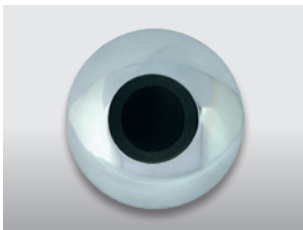
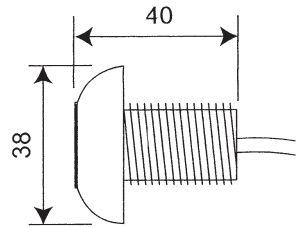
Battery Powered Order Code:
WCFV-B



38mm Stainless Steel Bezel Kit

Mains Powered Order Code:
WCFV-io-SS

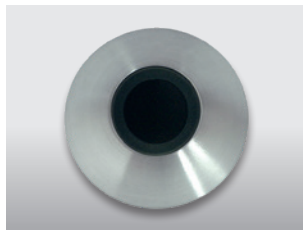
Battery Powered Order Code:
WCFV-B-SS



50mm Chrome Bezel Kit

Mains Powered Order Code:
WCFV-io (50)

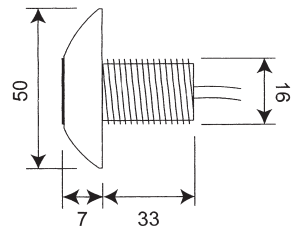
Battery Powered Order Code:
WCFV-B (50)



50mm Stainless Steel Bezel Kit

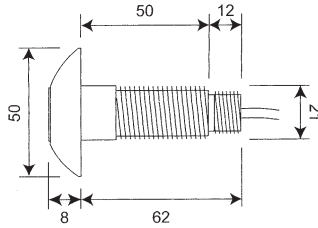
Mains Powered Order Code:
WCFV-io-SS (50)

Battery Powered Order Code:
WCFV-B-SS (50)



Electronic Touchpad WC Flush

(if preferred to No-Touch Sensor)



50mm Stainless Steel Touchpad Kit

Mains Powered
Order Code: WCFV-io-TPS

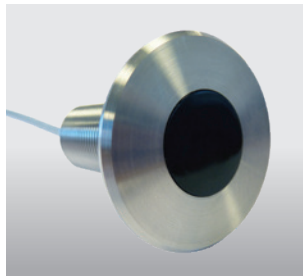
Battery Powered
Order Code: WCFV-B-TPS

Programmable "Auto" WC Sensor



Fit the sensor directly behind where a person sits on the WC pan, so the sensor is aiming at the person's lower back. (Make sure the WC pan does not have a seat or lid which when put up would obscure the sensor.) When a person sits on the WC, the person is detected. When the person finishes and leaves the sensing area for longer than a short (pre-set but adjustable) period, the WC will automatically be flushed.

Adjustable settings include; sensor range, detect times, flush times and walk away times, automatic purge, lock-out and more. For more detailed technical data please visit www.robertpearson.co.uk.



Auto WC Kit Order Codes:

PsensWC-AUTO-B
Battery powered

Kit c/w
1 x Programmable Sensor
1 x Pre-wired Solenoid Valve
1 x Control Box and Battery Pack

PsensWC-AUTO-M
Mains powered

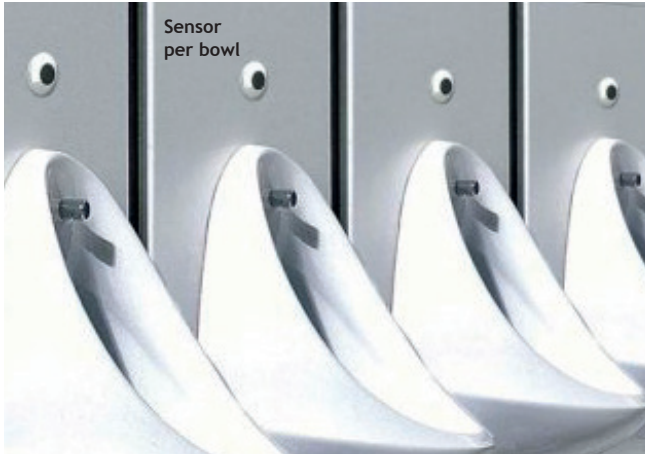
Kit c/w
1 x Programmable Sensor
1 x Pre-wired Solenoid Valve
1 x Control Box (you need to supply 3 amp fused spur)

Pre-wired WC Flushvalve (to fit into a cistern with flat bottomed internal base). 1 1/2" standard. Optional 2" if specified at time of order.

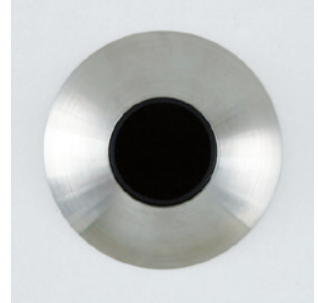
Automatic Sensor Operated Urinal Flushvalves (up to 90% water savings)

Can help achieve Wat 1 BREEAM Points.

- Each urinal bowl has its own sensor and solenoid valve, so that only the urinal bowl that gets used gets flushed.
- Flush occurs within a few seconds of person leaving
- Optional hygiene flush available



Mains Powered



Order Code	Description
SBUFC(V2)-M	Mains powered kit

Programmable Panel Mounted Urinal Sensor

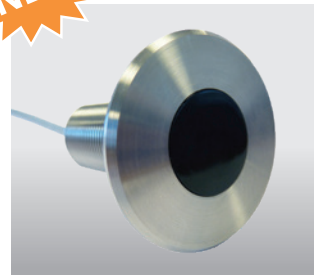
Adjustable settings include; pre-flush wait, pre-flush time and main flush time, sensor range and automatic purge to help prevent water dead legs. For more detailed technical data please visit www.robertpearson.co.uk.



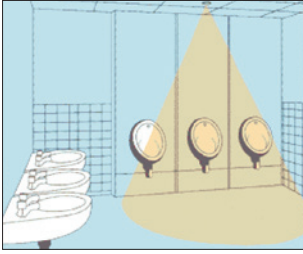
Urinal Sensor Kit Order Codes:

PsensU-B
Battery powered urinal sensor kit
Kit c/w
1 x Programmable Sensor
1 x Pre-wired Solenoid Valve
1 x Pre-wired Battery Pack

PsensU-M
Mains powered urinal sensor kit
Kit c/w
1 x Programmable Sensor
1 x Pre-wired Solenoid Valve
1 x Pre-wired 6V PSU (you need to provide a 3 amp fused spur)



PIR Urinal Flush Controls



- Single PIR controls the water flow to a small range of urinal bowls supplied from a single cistern
- Ceiling recessed or ceiling surface mounted PIRs available
- Automatic hygiene flush
- If not using cisterns, optional large orifice valves available on request

Ceiling Recessed PIRs



Order Codes

Description

- | | |
|-----|---------------------|
| DLB | Battery powered kit |
| DLM | Mains powered kit |



Order Codes

Description

- | | |
|------|---------------------|
| PDLB | Battery powered kit |
| PDLM | Mains powered kit |

Ceiling Surface Mounted PIR



Order Codes

Description

- | | |
|-----|---------------------|
| FMB | Battery powered kit |
| FMM | Mains powered kit |

Thermostatic Mixing Valves

Delivers safe, blended hot water to taps, bidets and other water outlets



Order Codes:

15mm TMV3

Order Code: RP/TMV3/15

22mm TMV3

Order Code: RP/TMV3/22

15mm c/w MX service valve

Order Code: RP/TMV3/MX/15

22mm c/w MX service valve

Order Code: RP/TMV3/MX/22

Available option 1

c/w Compression Top Connectors

Available option 2

c/w Test Points

All c/w Strainers and Check Valves.

Automatic “No-Touch” Sensor Operated Taps

- Can help achieve BREEAM points. Taps fitted with 5 Lpm flow regulator (lower flow rates available if specified)
- **Use up to 70% less water than conventional taps**
- Easy to operate – simply put your hands in front of the sensor
- Reliable & Hygienic “No-touch” operation
- Optional automatic purge facility available to flush taps that have not been used for long periods.
- Optional hand held programmer available on request.
- Optional low pressure solenoid valves available on request.

Panel Mounted Sensor Taps

Sensor is at the water outlet end of the spout



SSTW Model



150mm long spout projection



200mm long spout projection



250mm long spout projection

Highneck Sensor Taps for Vessel Basins

Sensor is at the water outlet end of the spout



CPTHN
Highneck
model



SSHN
Highneck
model



Basin / Deck Mounted Sensor Taps



CPTSN
Shortneck
model



SS45
model



SS32
model



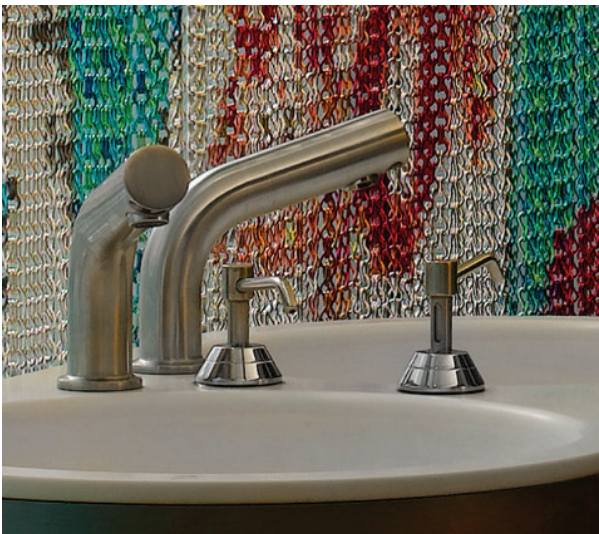
SSSN
Shortneck
model



CSN
model



CMT
model



Stainless Steel Tap Spouts



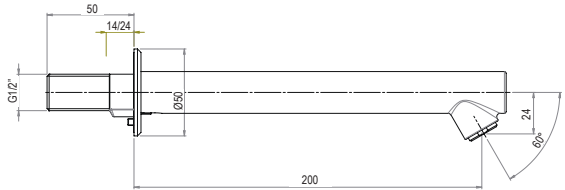
Use our remote no-touch sensor kits to control the water flow for these spouts.
 Please contact us for more information.

Panel mounted spouts made from brushed stainless steel with 5 Lpm integral flow regulator.



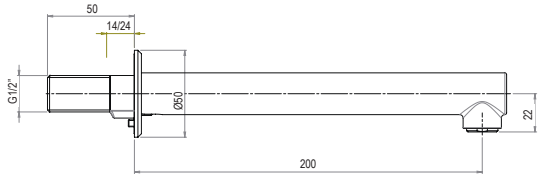
Order Code: EZ-SS-60

Spout with 60 degree water outlet end



Order Code: EZ-SS-90

Spout with 90 degree water outlet end



Twist and lock mechanism.
 Easy to remove for cleaning

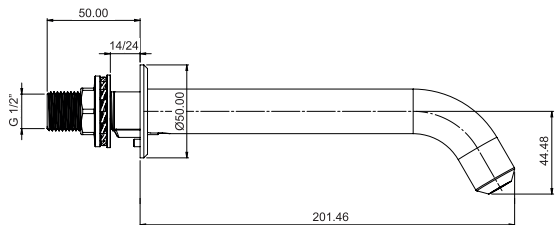
"Twist-and-Lock" panel mounted spouts can be used in any application but designed specifically for **health-care environments** as the spout can quickly & easily be removed by the building manager for cleaning, ensuring minimal downtime. No flow regulator in nozzle.

Use our remote no-touch sensor kits to control the water flow for these spouts.



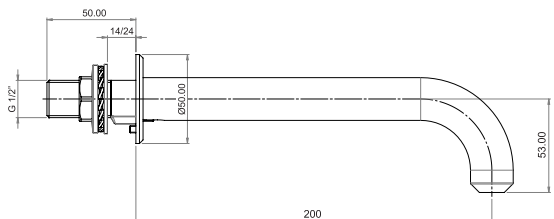
Order Code: SSEZ-60-Healthcare

Spout with 60 degree water outlet end



Order Code: SSEZ-90-Healthcare

Spout with 90 degree water outlet end



“No-Touch” Sensor Kits for your own Taps and Showers

You choose your own tap spout (or shower etc.), and we can control the water flow using our remote sensor kits

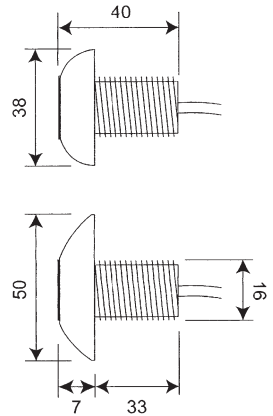
- Optional touchpad switch operation available
- Gives you total flexibility of design
- Optional automatic purge facility available to flush taps that have not been used for long periods. Optional lock out facility also available on mains powered kits.

TPTS Model (Tap)

Anti-ligature tap sensor with 50mm detection range



Standard sensor with chrome bezel
Optional stainless steel bezel available

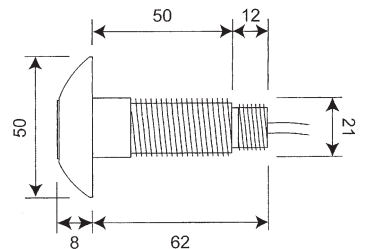
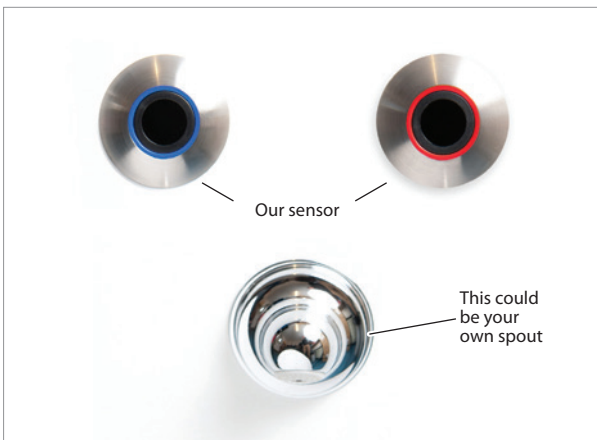


Order Codes:

TPTS-M/HP/1 Tap Sensor Kit (mains powered kit)

TPTS-B/HP/1 Tap Sensor Kit (battery powered kit)

For applications that require separate hot and cold supplies per basin please use special colour coded AV Sensors



Mains Powered Order Code:

TPTS-M/HP/2 Tap AV Sensor Kit

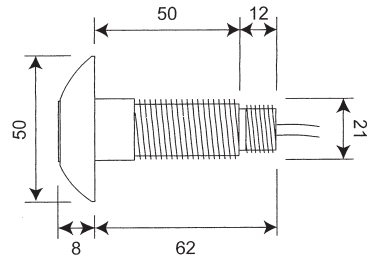
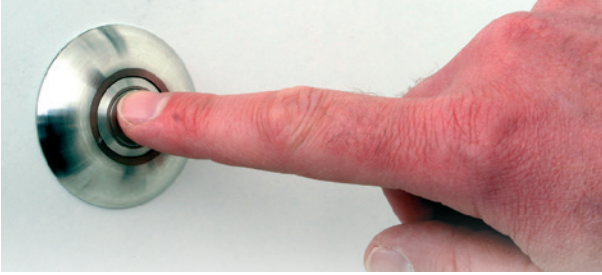
Battery Powered Order Code:

TPTS-B/HP/2 Tap AV Sensor Kit

Kit c/w 1 Red and 1 Blue Stainless Steel Sensor to denote hot and cold water

Electronic Touchpad Tap Control

Simply press the stainless steel Touchpad Switch to turn water on



Blue for cold water

Red for hot water



Electronic Touchpad c/w 3 metre cable. Available with blue insert for cold water; red insert for hot water

Waterproof Shower Sensor Control

Anti-ligature shower sensor with 50mm detection range

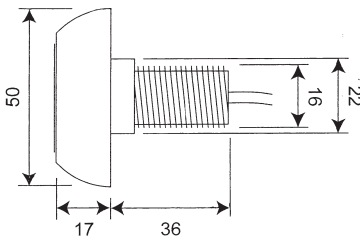


Wave your hand within two inches of the sensor to operate

Brushed stainless steel shower sensor order codes:

TPTS-M/HP/1 Shower Sensor Kit (mains powered kit)

TPTS-B/HP/1 Shower Sensor Kit (battery powered kit)



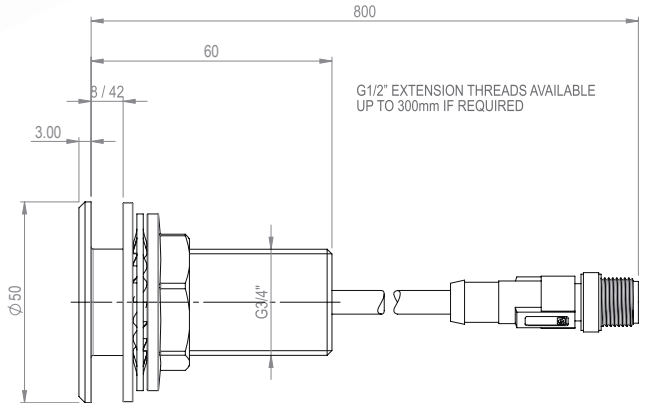
Programmable Panel Mounted Sensor



The Panel Mounted Programmable Sensor is available in brushed stainless steel. You can purchase a hand held programmer to adjust the settings yourself on site or we can pre-programme the sensor here to your specification.



Hand Held Programmer



Programmable Panel Mounted Tap Sensor *(to control your own tap spout)*

Adjustable settings include; run-on time, sensor range, wave-on/wave-off operation, automatic purge to help prevent water dead legs, anti-vandal features and more including a "lock-out" setting to help prevent excessive operations in a specified period. For more detailed technical data please visit www.robertpearson.co.uk.



Simply put your hand within the sensing range to activate the water. As long as the sensor detects your hand the water will continue to run. Take your hand away and the water will stop after the overrun time that you have programmed.

Tap Sensor Kit Order Codes:

PsensT-B

Battery powered tap sensor kit

Kit c/w

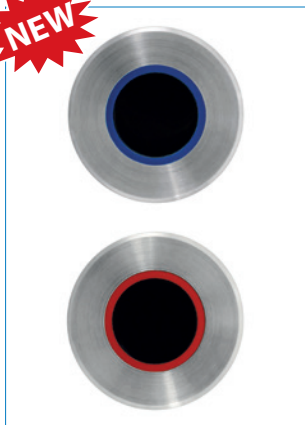
- 1 x Programmable Sensor
- 1 x Pre-wired Solenoid Valve
- 1 x Pre-wired Battery Pack

PsensT-M

Mains powered tap sensor kit

Kit c/w

- 1 x Programmable Sensor
- 1 x Pre-wired Solenoid Valve
- 1 x Pre-wired 6V PSU



Battery Powered Kits

Blue Insert (Cold) Tap Sensor

Kit Order Codes:

PsensT(B)-B

Battery powered tap sensor kit

Kit c/w: 1 x Programmable Sensor
1 x Pre-wired 15mm Solenoid Valve
1 x Pre-wired Battery Pack

Red Insert (Hot) Tap Sensor

Kit Order Codes:

PsensT(R)-B

Battery powered tap sensor kit

Kit c/w: 1 x Programmable Sensor
1 x Pre-wired 15mm Solenoid Valve
1 x Pre-wired Battery Pack

Mains Powered 2 Tap Kit

Red + Blue Inserts 2 Tap Sensor Kit Order Code:

PsensT(R+B)-M / 2 Tap Kit Mains powered tap sensor kit

Kit c/w: 2 x Programmable Sensors, 2 x Pre-wired 15mm Solenoid Valves
1 x Pre-wired 6V PSU, 1 x T-Connector

Programmable Panel Mounted Shower Sensor

(to control your own shower head)

Adjustable settings include; run-on time, sensor range, wave-on/wave-off, automatic purge, anti-vandal, lock-out and more. For more detailed technical data please visit www.robertpearson.co.uk.

Shower Sensor Kit Order Codes:

PsensS-B

Battery powered shower sensor kit

Kit c/w

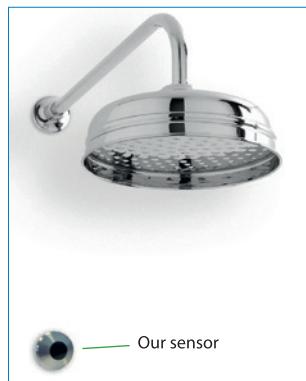
1 x Programmable Sensor
1 x Pre-wired Solenoid Valve
1 x Pre-wired Battery Pack

PsensS-M

Mains powered shower sensor kit

Kit c/w

1 x Programmable Sensor
1 x Pre-wired Solenoid Valve
1 x Pre-wired 6V PSU



Programmable Panel Mounted Bath Sensor

(to control your own bath spout)

Adjustable settings include; run-on time, sensor range, wave-on/wave-off, automatic purge, anti-vandal, lock-out and more. For more detailed technical data please visit www.robertpearson.co.uk.

Bath Sensor Kit Order Codes:

PsensB-B

Battery powered bath sensor kit

Kit c/w

1 x Programmable Sensor
1 x Pre-wired Solenoid Valve
1 x Pre-wired Battery Pack

PsensB-M

Mains powered bath sensor kit

Kit c/w

1 x Programmable Sensor
1 x Pre-wired Solenoid Valve
1 x Pre-wired 6V PSU



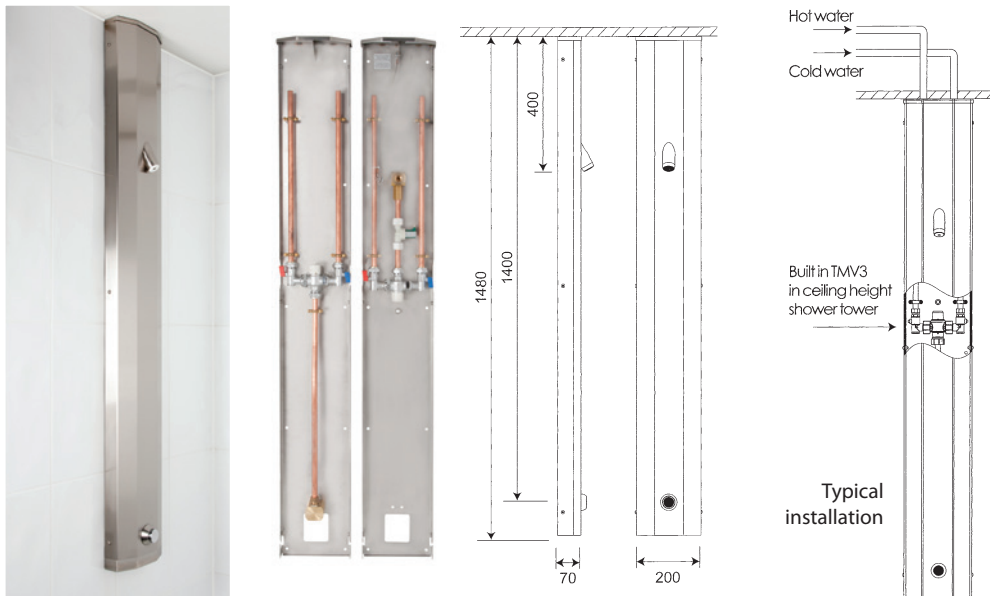
Standard G202 solenoid valve for water pressure 0.75 bar - 10 bar.

Optional low pressure valves also available on request

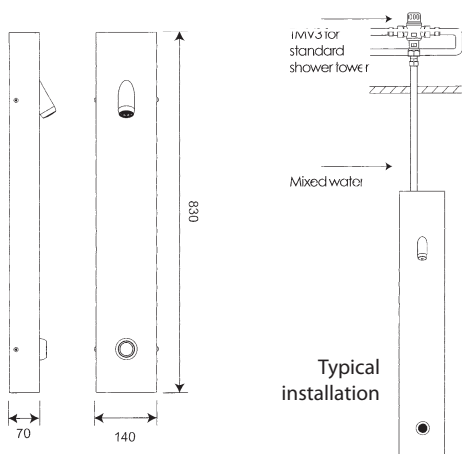
Tower Showers

- Up to 50% savings on water
- Designed for high-security applications
- Tamper proof, vandal-resistant robust stainless steel construction
- No touch sensor, electronic touchpad switch or manual push button operation
- Standard or Ceiling Height versions available

Ceiling Height Tower (available with or without built-in TMV3)



Standard Tower (not available with built-in TMV3)



Order Codes

Order Codes for Standard Tower Shower (please provide a separate TMV3):

Towers-STS-Push
Towers-STS-Sensor-M/HP
Towers-STS-Touchpad-M/HP

Order Codes for Ceiling Height Tower Shower (please provide a separate TMV3):

Towers-CHT-Push
Towers-CHT-Sensor-M/HP
Towers-CHT-Touchpad-M/HP

Order Codes for Ceiling Height TMV3 Tower Shower (fitted WITH integral TMV3):

Towers-CHT-TMV3-Push
Towers-CHT-TMV3-Sensor-M/HP
Towers-CHT-TMV3-Touchpad-M/HP

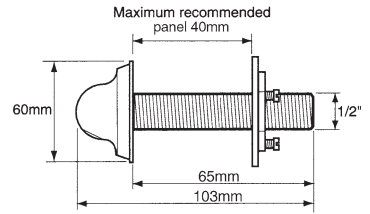
Standard high pressure (HP) solenoid valve is rated for water pressure 0.5 bar – 6 bar. Manual Push operation requires water pressure 1.5 bar – 5 bar

All kits are mains powered kits, with low voltage 12V PSU.

Anti-ligature and/or Vandal Resistant Taps and Showerheads

- Ideal for public toilets, prisons, healthcare, nightclubs etc. where vandalism will be a risk
- Use our TPTS remote “no-touch” sensor kit to control the water flow automatically if required

Anti-ligature panel mounted tap spouts and shower heads



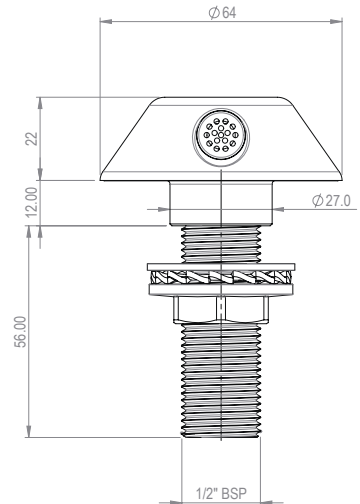
Panel mounted version

Tap Spout Order Code: ALBS-PM

Shower Head Order Code: ALSH-PM

Basin/deck mounted ligature resistant tap spout

Example of ALN-DM(v2) spout fitted to a basin



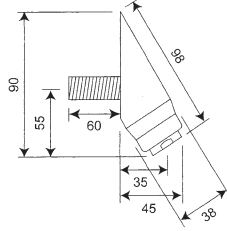
Order Code: ALN-DM(v2)

Anti-ligature and/or Vandal Resistant Taps and Showerheads (Cont.)

Vandal Resistant Stainless Steel Tap Spout



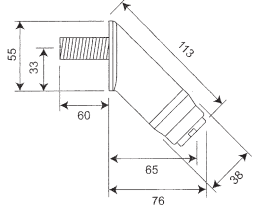
Panel Mounted
Order Code:
VRTS-PM Tap Spout



Vandal Resistant Stainless Steel Bath Spout



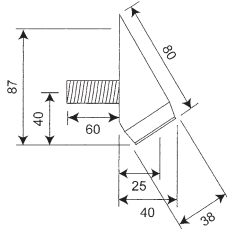
Panel Mounted
Order Code:
VRBS-PM Bath Spout
VRBS(Tap)-PM Tap Spout



Vandal Resistant Stainless Steel Shower Head

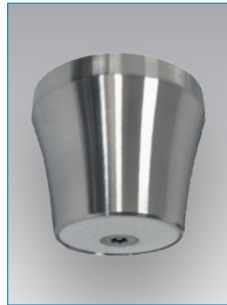


Panel Mounted
Order Code:
VRSH-PM Shower Head

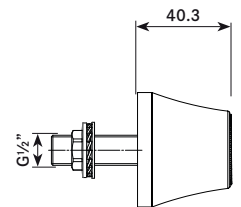


Ceiling Mounted Model

Anti-Ligature Shower Head

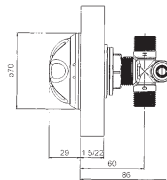


Ceiling Mounted
Order Code:
ALCMSh-PM(v2) Shower Head

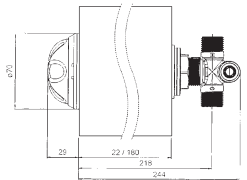


Temperature Blending Valve (Manually Adjustable)

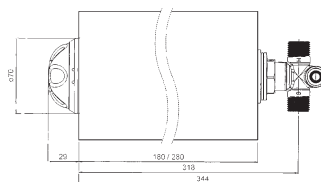
Allows user to manually alter the water temperature. Does not turn the water on or off.



Order Code
TBV/ADJ/22
 For 1.5mm – 22mm wall.



Order Code
TBV/ADJ/180
 Up to 180mm wall.



Order Code
TBV/ADJ/280
 Up to 280mm wall.

High Security Sanitaryware – WCs



Custodial Disabled WC Pan - Blue Gel



Floor mounted Custodial WC Pan



Wall mounted Custodial WC Pan

- Shatterproof sanitaryware is designed to be vandal proof and avoid ligature points wherever possible.
- Ideal for Custodial and Mental Health projects, and other commercial/public washrooms where vandalism is a high risk.

High Security Sanitaryware (Cont.) – Basins



Fully integrated all-in-one basin and backplate

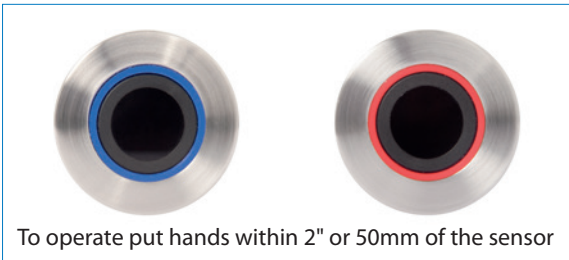


Fully integrated all-in-one single tap basin and backplate

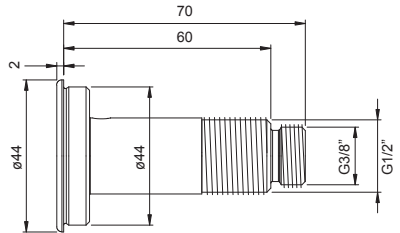
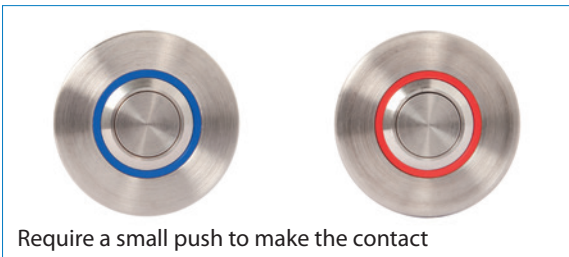
Anti-ligature Sensors or Touchpads for High Security Basin & Backplates

These sensors or touchpads fit into the backplate

No Touch Sensors



Touchpad Switches



High Security Sanitaryware (Cont.)

En Suites: For Healthcare/Custodial En Suites we offer Central Control Box to operate the WC, Basin and Shower

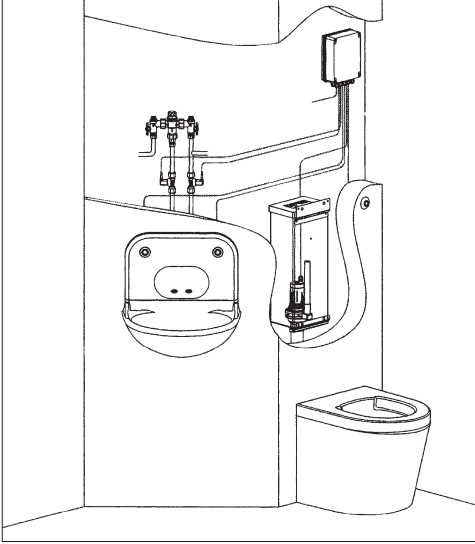


Fig. 1 WC and Basin

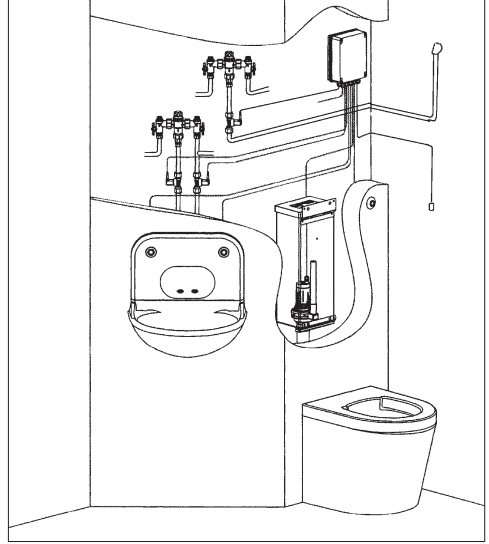
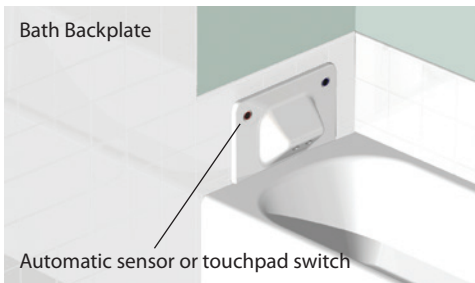


Fig. 2 WC, Basin and Shower

Sanitaryware Backplates are fitted with Anti-Ligature spouts.



Steel Bath Backplate to control water to a separate bath spout.

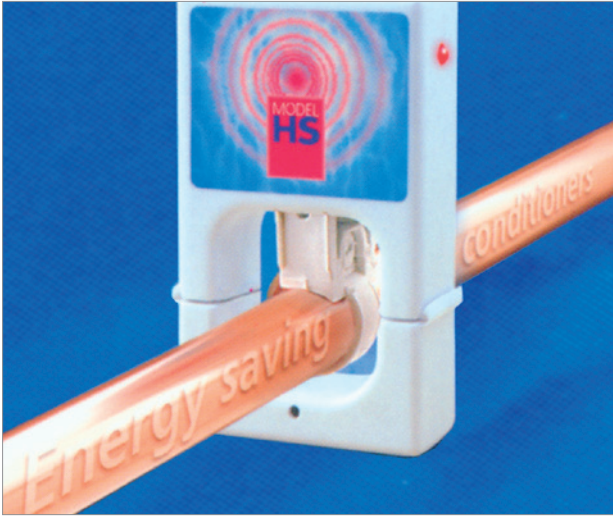


Hydroflow Water Conditioners

Help prevent the build-up of encrusting limescale in plumbing systems

- No plumbing, maintenance or chemicals required
- Improve energy efficiency on hot water heating systems and prolong the life of plumbing equipment in hard water areas
- Help remove existing scale build-up – just 3mm of limescale can add 20% to your heating bills!
- Commercial Units available for pipe sizes up to 200mm outside diameter. We can custom build models to suit any larger size pipe

Domestic Unit



Commercial Unit



Commercial Units (Cont.)

Order Code: C32



Order Code: C40



Order Code: C50



Order Code: C65



Order Code: C80



Order Code: C100



Order Code: C125



Water Saving Flow Regulators

- **Up to 70% water savings at taps and showers etc.** by ensuring maximum and constant flow rates, irrespective of changes in water pressure between 1 and 10 bar. Reduced hot water consumption also provides energy savings
- **Can help achieve BREEAM points. Help meet Code for Sustainable Homes etc.**
- Improves water distribution around the site especially at peak demand periods



RP/ACC model combined servicing valve and flow regulator with access port to enable removal of integral flow regulator without plumbing. Optional handle and/or integral strainer available. Available in nickel plated finish. 15mm and 22mm sizes available.

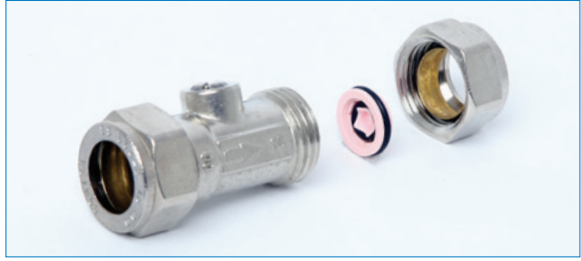
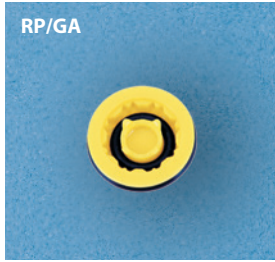
Flow rates from any of 2.5, 4, 6, 8, 10, 12, 15 or 18 Lpm



Order Code: 15mm RP/ISO: 15mm combined flow regulating & isolating valve with integral flow regulator (optional handle and/or strainer available).

Flow rates from any of 4, 5, 6, 8, 10, 12 or 15 Lpm

Water Saving Flow Regulators (Cont.)



RP/GA Flow Regulator Insert. Fit into your own choice of compression ended valve. Flow rates: 4, 6, 8, 10, 12, 15 or 18 Lpm



RP/DWSA/TTFR Tap Tail Flow Regulator. Flow rates: 1.4, 1.9, 2.5, 3.5, 5, 6, 8, 9, 10 or 12 Lpm



RP/CAAFR Aerator & Flow Regulator. Available flow rates: 1.9, 3.8, 5, 6, 8 Lpm



RP/SFR/DW Shower Flow Regulator. No plumbing. Flow rates from: 4, 6, 8, 9, 10, 12 or 15 Lpm

Projects carried out in 2017 include:

Restaurants / Bars / Clubs

Nandos
Zizzi
Five Guys
The Alibi (London)
McDonalds
Homeslice Pizza
Ole & Steen
Wright Brothers

Offices

The Gherkin (London)
The Scalpel (London)
Bloomberg HQ Building (London)
"Can of Ham" (London)
RBS, Regents House (London)
Standard Life (Edinburgh)
BBC (Cardiff)
British Car Auctions (Bedford)
Rivergate House (Newbury)
The Point, Paddington (London)
Beaulieu Park (Chelmsford)
TSL Building (Maidenhead)
Interserve HQ (Birmingham)
KPMG (Watford)
The Bower Tower (London)
MidCity Place (London)
London Fruit & Wool Exchange
TNT UK Ltd (Atherstone)
Guildford Business Park
Mars Foods (Kings Lynn)

Museums / Arts

National Trust (Avebury & Stourhead)
Norden Farm Centre for the Arts
(Maidenhead)
National Army Museum (London)
Glasgow Science Centre

Sports Centres / Entertainment

Empire Cinemas
Romford Leisure Centre
Kingsmere Sports Pavilion, (Bicester)
Weald of Kent Gold Club, (Headcorn)
Hull Venue

Education

Staff House, Hull University
Cockcroft Building (Brighton University)
Ditton Park Academy (Slough)
Callywith College (Bodmin)
Birmingham City University
Lovelace Primary School
(Chessington)
University College London
McEwan Hall (Edinburgh University)
UTC Portsmouth
University of Surrey
Seaford College (Petworth)
Student Castle (Bath)
Bournemouth College
Selwyn School (London)
Mulberry House School (Witney)

Hospitals

Prory Hospitals Group
Castle Peak Hospital (Hong Kong)
Cheswold Park Hospital (Doncaster)
Bradley Woodlands Hospital
(Grimsby)
Saint John of God Hospital (Ireland)
Lighthouse Healthcare
Veterans Aid (London)
Inmind Healthcare, Sturdee Hospital
(Leicester)
New Papworth Hospital (Cambridge)
Royal Bolton Hospital

Government

Aspire Defence
RAF Shawbury
Nottinghamshire Police
London Fire Stations
The Royal Parks (London)
MOD Building (London)

Retail

Westfield Shopping Centres
Waitrose
Primark
Marks & Spencers
Iceland Foods Ltd
IKEA
LIDL
Screwfix
Dick Lovett Land Rover (Melksham)



Not applicable to all products. For full details of WRAS and ECA approved products please contact us



ROBERT PEARSON & COMPANY LTD

Post Office House, Post Office Lane
Stockton, Warminster
Wiltshire BA12 0SE

Telephone: (01985) 850954

Facsimile: (01985) 850112

E-Mail: sales@robertpearson.co.uk

Website: www.robertpearson.co.uk