

Robert Pearson & Company Ltd.

Water & Energy Saving Solutions

Product Guide 2019/2020

www.robertpearson.co.uk

Tel: 01985 850954

Sensor Taps



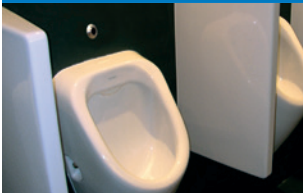
Remote Tap Sensors



Sensor WC Flush



Sensor Urinal Flushvalves



PIR Urinal Controls



Anti Ligature



PIR Switches



Sanitary Shut Off Valves



Actuated Valves



Inline Water Flow Regulators



Neoperl Aerators & Flow Regs






Limescale Control



NEOPERL®
DISTRIBUTOR

Contents

| | |
|--|--------------------|
| Water Saving Flow Regulators | Pages 1–5 |
|  <i>Water Saving Tap Aerators and Flow Regulators</i> | <i>Pages 2-3</i> |
|  <i>Water Saving Tap Tail Flow Regulators</i> | <i>Page 4</i> |
|  <i>Water Saving Shower Flow Regulators</i> | <i>Page 4</i> |
| <i>Water Saving Inline Flow Regulators</i> | <i>Page 5</i> |
| Automatic “No-Touch” Sensor Operated Taps | Pages 6–7 |
| Tap Spouts | Page 8 |
| <i>Black Tap Spouts</i> | <i>Page 8</i> |
| <i>Chrome Tap Spouts</i> | <i>Page 8</i> |
| <i>Brushed Stainless Steel Tap Spouts</i> | <i>Page 8</i> |
| “No Touch” Sensor Kits for your Tap Spouts | Pages 9–10 |
| <i>TPTS Model Black Tap Sensor Kits</i> | <i>Page 9</i> |
| <i>TPTS Model Chrome Tap Sensor Kits</i> | <i>Page 9</i> |
| <i>TPTS Model Brushed Stainless Steel Tap Sensor Kits</i> | <i>Page 10</i> |
| <i>Touchpad Switch Kits for your Tap Spouts</i> | <i>Page 10</i> |
| <i>Programmable Tap Sensor Kits for your Tap Spouts</i> | <i>Pages 10–11</i> |
| “No Touch” Sensor Kits for your Shower Heads and Bath Spouts | Pages 11-12 |
| <i>Touchpad Switch Kits for your Bath</i> | <i>Page 12</i> |
| <i>Programmable Shower and Bath Sensor Kits</i> | <i>Page 12</i> |
| Thermostatic Mixing Valves | Page 12 |
| Anti-Ligature and Vandal-Resistant Tap Spouts and Showerheads | Page 13 |
| High Security Sanitaryware | Page 14 |
| Hydroflow Water Conditioners | Page 15 |
| Swipe Type “No Touch” Sensor Operated WC Flushvalves | Pages 16–17 |
| <i>Electronic Touchpad WC Flushvalves</i> | <i>Page 17</i> |
| <i>Programmable “Auto” Sensor WC Flushvalves</i> | <i>Page 17</i> |
| Automatic Sensor Operated Urinal Flushvalves | Pages 18–19 |
| <i>Programmable Sensor Operated Urinal Flushvalves</i> | <i>Page 19</i> |
| PIR Urinal Flush Controls | Page 19 |
| Proximity Detection Shut Off Valves | Page 20 |
| <i>PIR Occupancy Switches</i> | <i>Page 20</i> |
| <i>Normally Closed WRAS Solenoid Valves</i> | <i>Page 20</i> |
| Actuated Valves | Page 21 |
| <i>Actuated FailsafeOpen/Failsafe Close WRAS Butterfly Valves</i> | <i>Page 21</i> |
| <i>Actuated FailsafeOpen/Failsafe Close WRAS Ball Valves</i> | <i>Page 21</i> |

Welcome ...

... to our Water and Energy Saving Solutions Product Guide 2019/2020. As an official distributor for **Neoperl®** we can supply their full range of flow regulators and tap aerators etc., offering innovative solutions regarding drinking water for the plumbing industry. Neoperl® products can shape the water stream, regulate the flow rate and protect drinking water.

Alongside our Robert Pearson inline flow regulator products, these cost-effective products can help achieve **BREEAM Points** and help meet **Code for Sustainable Homes** etc. With these products you can achieve water savings of up to 70% by providing constant and maximum flow rates irrespective of fluctuations in changes of water pressure.

The following pages show a selection of the most requested Neoperl® products. We can supply aerators etc. with or without Neoperl® Chrome Housings. Cache® products screw into tap's female thread (no housing required). For comprehensive product information visit www.robertpearson.co.uk/products/water-flow-regulators/ or visit www.neoperl.net

Perlator® Honeycomb



Improved lime protection

Damage proof: unlike conventional wire mesh screens, the HONEYCOMB structure cannot be crushed. Integrated anti-clogging dome screen filters sediments and particles.

Female M22 and Male M24

Housings for Standard (STD) aerator



Male M28

Housing for Tubfiller (TF) aerator

Cascade®



Superior lime protection

Damage proof: unlike conventional wire mesh screens, the CASCADE® structure cannot be crushed. Integrated anti-clogging dome screen filters sediments and particles.

Female M19 and Male M20

Housings for Tiny Junior (TJ) aerator



US Female 3/4" and US Male 13/16"

Housings for Junior (JR) aerator

or Cascade® SLC?



Smart Lime Cleaning (SLC)

for a maximum lifespan of your tap aerator: All the features of Cascade® + maximum lime resistance.

No need to remove the aerator for cleaning.

Male M18, Female M16 / IG 3/8"

Housings for Tom Thumb (TT) aerator



Water Saving Tap Aerators and Flow Regulators

No plumbing required to fit. Simply replace existing tap aerator or flow straightener

RP/CAAFR Cascade model combined aerator and flow regulator



Order Code: **RP/CAAFR**

Available Flow Rates/Colour Coding

| | |
|--------------------|-------------|
| 1.9 Lpm Lime Green | 6 Lpm Black |
| 3.8 Lpm Blue | 8 Lpm White |
| 5 Lpm Orange | |

RP/MIKADO model flow regulator with grid-like spray pattern



Order Code: **RP/MIKADO**

Available Flow Rates/Colour Coding

| | |
|--------------------|--------------|
| 1.3 Lpm Brown | 3.8 Lpm Blue |
| 1.9 Lpm Lime Green | 4.5 Lpm Pink |

RP/SPRAY-ITR model flow regulator with soft rain-like spray



Order Code: **RP/SPRAY-ITR**

Available Flow Rates/Colour Coding

| | |
|--------------|-------------|
| 3.8 Lpm Blue | 7 Lpm Green |
| 5 Lpm Orange | |

RP/LAMINAR Perlator model combined laminar and flow regulator (does not aerate the water)



Order Code: **RP/LAMINAR**

Available Flow Rates/Colour Coding

| | |
|--------------------|-------------|
| 1.9 Lpm Lime Green | 6 Lpm Black |
| 3.8 Lpm Blue | 8 Lpm White |
| 5 Lpm Orange | |

For additional information visit:
robertpearson.co.uk/products/water-flow-regulators/

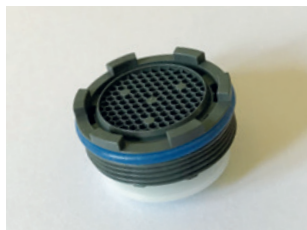


Water Saving Tap Aerators and Flow Regulators

No plumbing required to fit. Simply replace existing tap aerator or flow straightener

RP/CACHÉ Perlator model combined aerator and flow regulator

Screws into female tap thread—no housing required







Order Code: **RP/CACHE**

Available Flow Rates/Colour Coding

| | | | |
|---------|--------|-------|-------|
| 3.8 Lpm | Blue | 7 Lpm | Green |
| 5 Lpm | Orange | 8 Lpm | White |
| 6 Lpm | Black | | |

Caché Service Key

Order Codes:

| | |
|---|------------------|
|  | RP/CACHE/KEY/TT |
|  | RP/CACHE/KEY/TJ |
|  | RP/CACHE/KEY/JR |
|  | RP/CACHE/KEY/STD |

Approximate size guide for caché service keys:
 Yellow (TT) = 16mm, Green (TJ) = 18mm
 Red (JR) = 21mm, Grey (STD) = 24mm



RP/SSR Perlator model combined aerator and flow regulator with swivel feature



The angle of the water stream can be adjusted directly at the aerator by moving the adjustable tilting plate. Swivel angle (depending on the aerator model): $\pm 6^\circ$ up to $\pm 10^\circ$

Order Code: **RP/SSR**

Available Flow Rates/Colour Coding

| | | | |
|---------|--------|-------|-------|
| 3.8 Lpm | Blue | 7 Lpm | Green |
| 5 Lpm | Orange | 8 Lpm | White |
| 6 Lpm | Black | | |

RP/UNRESTRICTED model flow straightener (mainly for taps used in low pressure installations)

Order Code: **RP/UNRESTRICTED**



For additional information visit:
robertpearson.co.uk/products/water-flow-regulators/



Water Saving Tap Tail Flow Regulators

No plumbing required. Water savings and improved distribution at peak times

RP/DWSA/TTFR model 1/2" Tap Tail Flow Regulator c/w chrome housing



Order Code: RP/DWSA/TTFR

Available Flow Rates/Colour Coding

| | | | |
|---------|--------|--------|-------|
| 1.4 Lpm | Brown | 6 Lpm | Pink |
| 1.9 Lpm | Yellow | 8 Lpm | Red |
| 2.5 Lpm | Orange | 9 Lpm | Lilac |
| 3.5 Lpm | Beige | 10 Lpm | Black |
| 5 Lpm | Violet | 12 Lpm | White |

Water Saving Shower Flow Regulators

No plumbing required. Water savings and improved distribution at peak times

RP/SFR/DW model 1/2" Shower Flow Regulator c/w chrome housing

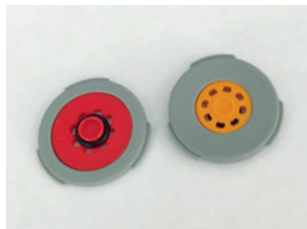


Order Code: RP/SFR/DW

Available Flow Rates/Colour Coding

| | | | |
|-------|--------|--------|------------|
| 4 Lpm | Grey | 10 Lpm | Blue |
| 6 Lpm | Black | 12 Lpm | Red |
| 8 Lpm | White | 15 Lpm | Lime Green |
| 9 Lpm | Orange | | |

RP/PCW-01 model 1/2" Washer Regulator for shower hose

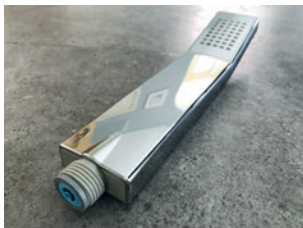
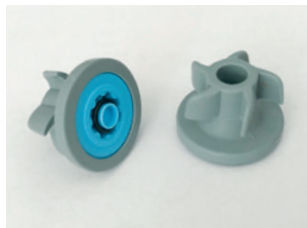


Order Code: RP/PCW-01

Available Flow Rates/Colour Coding

| | | | |
|-------|-----------|--------|------------|
| 4 Lpm | Dark Grey | 10 Lpm | Light Blue |
| 6 Lpm | Black | 12 Lpm | Red |
| 8 Lpm | White | 15 Lpm | Lime Green |
| 9 Lpm | Orange | | |

RP/PCW-02 model 1/2" Washer Regulator for male thread shower handles (and bib/pillar tap tails)



Order Code: RP/PCW-02

Available Flow Rates/Colour Coding

| | | | |
|-------|-----------|--------|------------|
| 2 Lpm | Olive | 9 Lpm | Orange |
| 4 Lpm | Dark Grey | 10 Lpm | Light Blue |
| 6 Lpm | Black | 12 Lpm | Red |
| 8 Lpm | White | | |



Water Saving Inline Flow Regulators

Can help achieve BREEAM points. Help meet Code for Sustainable Homes etc.

- Up to 70% water savings at taps and showers etc. by ensuring maximum and constant flow rates, irrespective of changes in water pressure between **1 & 10 bar** unless stated otherwise. Reduced hot water consumption also provides energy savings
- Improves water distribution around the site especially at peak demand periods

RP/ACC model combined flow regulating & isolating ACCESS valve

(for outlets supplied with water pressure 0.5 Bar – 6 Bar maximum)



Available Flow Rates (litres per minute) for both 15mm RP/ACC and 22mm RP/ACC

| | | | |
|---------|------------|--------|--------|
| 2.5 Lpm | Lime Green | 10 Lpm | Yellow |
| 4 Lpm | Pink | 12 Lpm | Brown |
| 6 Lpm | Grey | 15 Lpm | Blue |
| 8 Lpm | White | 18 Lpm | Green |

Optional strainer available on request.
Optional Red and/or Blue Handles for the valves available on request.

Order Codes: **15mm RP/ACC** or **22mm RP/ACC**

RP/ISO model combined flow regulating & isolating valve



Available Flow Rates (litres per minute) for 15mm RP/ISO

| | | | |
|-------|--------|--------|------------|
| 4 Lpm | Grey | 10 Lpm | Blue |
| 5 Lpm | Yellow | 12 Lpm | Red |
| 6 Lpm | Black | 15 Lpm | Lime Green |
| 8 Lpm | White | 18 Lpm | Green |

Optional Red and/or Blue Handles for the valves available on request.

Order Code: **15mm RP/ISO**

RP/GA model flow regulating insert

(for your own choice of compression ended 15mm valve)



Available Flow Rates (litres per minute) for 15mm RP/GA

| | | | |
|--------|--------|--------|-------|
| 4 Lpm | Pink | 12 Lpm | Brown |
| 6 Lpm | Grey | 15 Lpm | Blue |
| 8 Lpm | White | 18 Lpm | Green |
| 10 Lpm | Yellow | | |

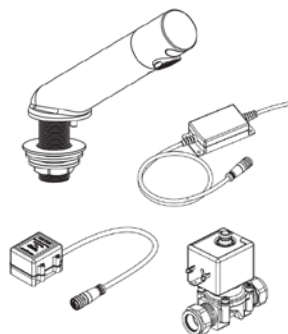
Order Code: **15mm RP/GA**

For additional information visit:
robertpearson.co.uk/products/water-flow-regulators/

Automatic “No Touch” Sensor Operated Taps

Use up to 70% less water than conventional taps. Can help achieve BREEAM Points

- Easy to operate – simply put your hands in front of the sensor
- Reliable & Hygienic “No-touch” operation
- Optional automatic purge facility available



Each kit c/w:

1 x pre-wired Sensor Tap fitted with 5 Lpm flow regulator (lower flow rates available if specified),

1 x 15mm Solenoid Valve 0.75 bar – 10 bar (low pressure 0 bar – 1.5 bar maximum available if specified)

1 x pre-wired 6v PSU or pre-wired Battery Pack.

Panel Mounted Brushed Stainless Steel Sensor Tap Kits



“Special-build” two tone c/w PVD charcoal black body
(200mm spout projection)

Panel Mounted Sensor Tap

(150mm spout projection)

Mains Powered: SSTW-M/150mm

Battery Powered: SSTW-B/150mm



Panel Mounted Sensor Tap

(200mm spout projection)

Mains Powered: SSTW-M/200mm

Battery Powered: SSTW-B/200mm



Panel Mounted Sensor Tap

(250mm spout projection)

Mains Powered: SSTW-M/250mm

Battery Powered: SSTW-B/250mm



Basin/Deck Mounted Sensor Tap Kits

Highneck Sensor Tap

Chrome finish (for vessel basins)

Mains Powered: CPTHN-M

Battery Powered: CPTHN-B



Highneck Sensor Tap

Brushed steel (for vessel basins)

Mains Powered: SSHN-M

Battery Powered: SSHN-B



Shortneck Sensor Tap

Chrome finish

Mains Powered: CPTSN-M

Battery Powered: CPTSN-B



Shortneck Sensor Tap

Brushed steel finish

Mains Powered: SSSN-M

Battery Powered: SSSN-B



Sensor Tap

Chrome finish

Mains Powered: CMT-M

Battery Powered: CMT-B



45° Spout Projection Sensor Tap

Brushed steel finish

Mains Powered: SS45-M

Battery Powered: SS45-B



Sensor Tap

Chrome finish

Mains Powered: CSN-M

Battery Powered: CSN-B



32° Spout Projection Sensor Tap

Brushed steel finish

Mains Powered: SS32-M

Battery Powered: SS32-B



For additional information visit:
robertpearson.co.uk/products/sensor-taps/

Black Tap Spouts

Use our remote no-touch sensor kits to control the water flow for these spouts



Black panel-mounted spout

Order Code: MB3TS-PM



Black deck/basin-mounted spout

Order Code: MB3TS-DM

TECHNICAL DATA

Operating pressure 5 Bar maximum
 Max Inlet temp 65 °C
 Finish Powder coated
 Standard flow reg. 3.8 Lpm
 Optional flow reg. 1.9, 5, 6 or 8 Lpm
 Optional unrestricted insert for very low water applications on request

Other RAL colours available

Chrome Tap Spouts



Chrome panel-mounted spout

Order Code: CTS-PM



Chrome deck/basin-mounted spout

Order Code: CTS-DM

TECHNICAL DATA

Operating pressure 5 Bar maximum
 Max Inlet temp 65 °C
 Finish Chrome
 Standard flow reg. 3.8 Lpm
 Optional flow reg. 1.9, 5, 6 or 8 Lpm
 Optional unrestricted insert for very low water applications on request

Panel-mounted Stainless Steel Tap Spouts



Spout with 60° water outlet end

Order Code: EZ-SS-60



Spout with 90° water outlet end

Order Code: EZ-SS-90

TECHNICAL DATA

Spout projection 200mm (approx.)
 Standard flow reg. 5 Lpm



Spout with 60° water outlet end

Order Code: SSEZ-60-Healthcare



Spout with 90° water outlet end

Order Code: SSEZ-90-Healthcare

TECHNICAL DATA

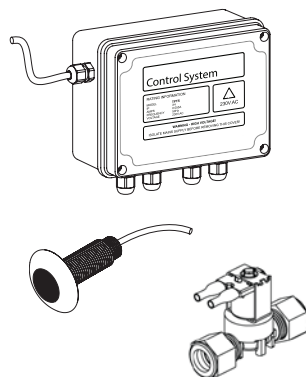
Spout projection 200mm (approx.)
 Standard flow reg. Unrestricted

“Twist-and-Lock” function: can be used in any application, but designed specifically for **healthcare environments** as the spout can quickly and easily be removed by the building manager for cleaning, ensuring minimal downtime.

“No-Touch” Sensor Kits for your Tap Spouts

Anti-ligature sensor with 50mm detection range. Gives you total flexibility of design

- Optional automatic purge facility available to flush taps that have not been used for long periods.
- Optional lock out facility also available on mains powered kits.



Water Pressure – Battery powered

Standard pressure valves 0.75 bar – 10 bar
 Low pressure valves 0 bar – 1.5 bar maximum
 (replace HP with LP in order code)
 Very low pressure valves 0 bar – 0.5 bar
 maximum (replace HP with VLP in order code)

Water Pressure – Mains powered

Standard pressure valves 0.5 bar – 6 bar
 Low pressure valves 0 bar – 0.5 bar maximum
 replace HP with LP in order code.

*Each 1 Tap Sensor kit c/w 1 x
 Control Box, 1 x pre-wired Solenoid
 Valve, 1 x pre-wired Sensor.*

*Each 2 Tap Sensor kit c/w 1 x
 Control Box, 2 x pre-wired Solenoid
 Valve, 2 x pre-wired Sensor.*

TPTS model Black Tap Sensor kits



Battery-powered

Order Code:
 TPTS-B/HP/MB3/1 Tap Sensor kit
 Order Code:
 TPTS-B/HP/MB3/2 Tap Sensor kit
Other RAL colours available

Mains-powered

Order Code:
 TPTS-M/HP/MB3/1 Tap Sensor kit
 Order Code:
 TPTS-M/HP/MB3/2 Tap Sensor kit
Other RAL colours available

TPTS model Chrome Tap Sensor kits



Battery-powered

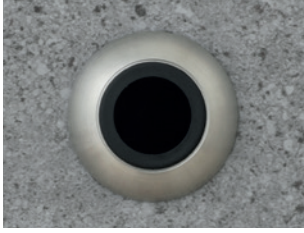
Order Code:
 TPTS-B/HP/CHR/1 Tap Sensor kit
 Order Code:
 TPTS-B/HP/CHR/2 Tap Sensor kit

Mains-powered

Order Code:
 TPTS-M/HP/CHR/1 Tap Sensor kit
 Order Code:
 TPTS-M/HP/CHR/2 Tap Sensor kit

For additional information visit:
robertpearson.co.uk/products/tap-sensor-controls/

TPTS model Brushed Stainless Steel Tap Sensor kits



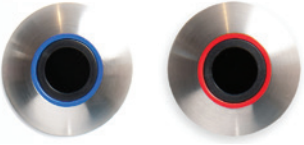
Battery-powered

Order Code:
TPTS-B/HP/SS/1 Tap Sensor kit
Order Code:
TPTS-B/HP/SS/2 Tap Sensor kit

Mains-powered

Order Code:
TPTS-M/HP/SS/1 Tap Sensor kit
Order Code:

For applications that require separate hot and cold supplies use colour coded AV sensors



Battery-powered

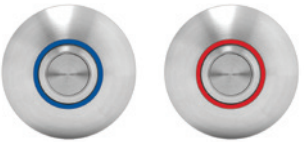
Order Code:
TPTS-B/HP/2 Tap AV Sensor kit

Mains-powered

Order Code:
TPTS-M/HP/2 Tap AV Sensor kit

Touchpad Switch Kits for your Tap Spouts

Lightly press the touchpad switch to turn the water on



Battery-powered

Order Code:
TPTS-B/HP/1 Tap Touchpad kit
Order Code:
TPTS-B/HP/2 Tap Touchpad kit

Mains-powered

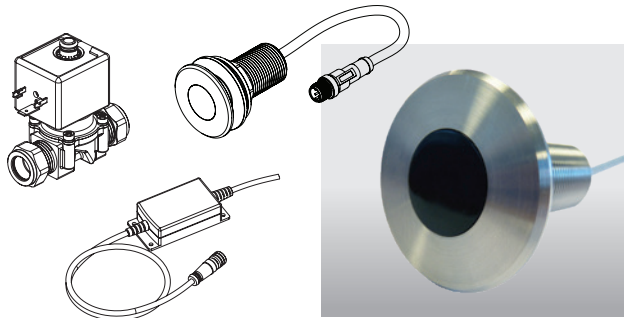
Order Code:
TPTS-M/HP/1 Tap Touchpad kit
Order Code:
TPTS-M/HP/2 Tap Touchpad kit

Programmable Tap Sensor Kits for your Tap Spouts

Simply put your hand within the sensing range to activate the water



Each kit comes with 1 x pre-wired Programmable Sensor, 1 x pre-wired Solenoid Valve and 1 x pre-wired 6vPSU or pre-wired battery pack.

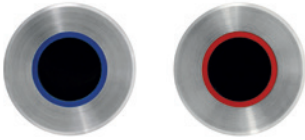


Programmable Steel Sensor Kit

Mains Order Code: PsensT-M
Battery Order Code: PsensT-B

For additional information visit:
robertpearson.co.uk/products/programmable-sensors/

For separate hot and cold supplies per basin use special colour coded Tap Sensors



Battery-powered

Blue Insert (Cold) Tap Sensor Kit
Order Code: PsensT(B)-B

Red Insert (Hot) Tap Sensor Kit
Order Code: PsensT(R)-B

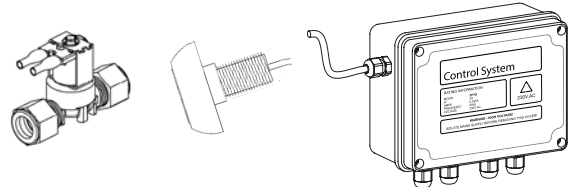
Mains-powered 2 Tap Kit

Red + Blue Inserts 2 Tap Sensor Kit
PsensT(R+B)-M / 2 Tap Kit

*Kit c/w: 2 x Programmable Sensors,
2 x Pre-wired 15mm Solenoid
Valves, 1 x Pre-wired
6V PSU, 1 x Y-Connector*

“No-Touch” Sensor Kits for Shower Heads and Bath Spouts

Waterproof brushed stainless steel bath/shower sensor c/w 8 metre cable



Each 1 Shower/Bath Sensor kit c/w 1 x Control Box, 1 x pre-wired Solenoid Valve, 1 x pre-wired Waterproof Sensor.

Each 2 Shower Sensor kit

c/w 1 x Control Box, 2 x pre-wired Solenoid Valve, 2 x pre-wired Waterproof Sensor.



Battery-powered

Shower Order Codes:
TPTS-B/HP/1 Shower Sensor kit
TPTS-B/HP/2 Shower Sensor kit

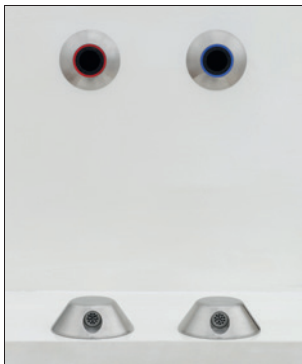
Bath Order Code:
TPTS-B/HP/1 Bath Sensor kit

Mains-powered

Shower Order Codes:
TPTS-M/HP/1 Shower Sensor kit
TPTS-M/HP/2 Shower Sensor kit

Bath Order Code:
TPTS-M/HP/1 Bath Sensor kit

For separate hot and cold supplies to your bath tub use colour coded AV Bath Sensors



Battery-powered

Order Codes:
TPTS-B/HP/1 Bath AV Sensor Kit
TPTS-B/HP/2 Bath AV Sensor Kit

Each 1 Bath AV Sensor kit

c/w 1 x Control Box, 1 x pre-wired Solenoid Valve, 1 x pre-wired AV Sensor (specify colour).

Each 2 Bath AV Sensor kit c/w 1 x Control Box, 2 x pre-wired Solenoid Valve, 2 x pre-wired Sensor (1 red, 1 blue).

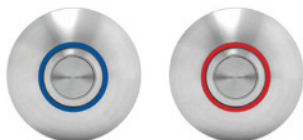
Mains-powered

Order Codes:
TPTS-M/HP/1 Bath AV Sensor Kit
TPTS-M/HP/2 Bath AV Sensor Kit

For additional information visit:
robertpearson.co.uk/products/shower-and-bath-sensor-controls/

Touchpad Switch Kits for your Bath

Lightly press the touchpad switch to turn the water on



Battery-powered

Order Code:
TPTS-B/HP/1 Bath Touchpad kit

Order Code:
TPTS-B/HP/2 Bath Touchpad kit

Mains-powered

Order Code:
TPTS-M/HP/1 Bath Touchpad kit

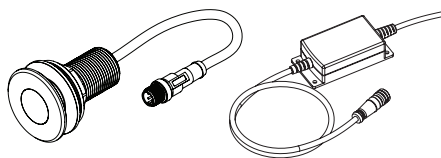
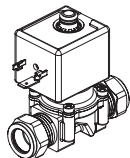
Order Code:
TPTS-M/HP/2 Bath Touchpad kit

Programmable Shower and Bath Sensor Kits

Simply put your hand within the sensing range to activate the water



Each kit comes with 1 x pre-wired Programmable Sensor, 1 x pre-wired Solenoid Valve and 1 x pre-wired 6vPSU or pre-wired battery pack.



Battery-powered

Shower Sensor Kit Order Code:
PsensS-B

Bath Sensor Kit Order Code:
PsensB-B

Mains-powered

Shower Sensor Kit Order Code:
PsensS-M

Bath Sensor Kit Order Code:
PsensB-M

Thermostatic Mixing Valves

Delivers safe, blended hot water to taps, bidets and other water outlets



Order Codes:

15mm TMV3
Order Code: RP/TMV3/15

22mm TMV3
Order Code: RP/TMV3/22

15mm c/w MX service valve
Order Code: RP/TMV3/MX/15

22mm c/w MX service valve
Order Code: RP/TMV3/MX/22

All c/w Strainers and Check Valves

Available option 1
c/w Compression Top Connectors

Available option 2
c/w Test Points

Anti-ligature Taps and Showerheads

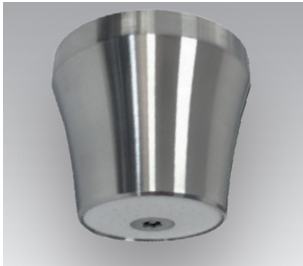
Use our TPTS remote "no-touch" sensor kits to control the water flow automatically

Basin/Deck Mounted Anti-Ligature Tap Spout



Order Code: ALN-DM(v2)

Ceiling Mounted Anti-ligature Shower Head



Order Code:
ALCMSH-PM(v2)

For additional information visit:
robertpearson.co.uk/products/anti-ligature-taps/

Vandal Resistant Taps and Showerheads

Use our TPTS remote "no-touch" sensor kits to control the water flow automatically

Panel Mounted Tap Spout



Order Code: VRTS-PM

Panel Mounted Spout



Order Codes:
VRBS-PM Bath Spout
VRBS(Tap)-PM Tap Spout

Panel Mounted Shower Head



Order Code: VRSH-PM

High Security Sanitaryware

Ideal for Custodial, Mental Health projects, and washrooms where vandalism is a high risk

Order Code: **HSFP**
Floor standing WC Pan



Order Code: **HSFP-Blue Gel**
Floor standing Blue Gel WC Pan



Order Code: **HSWP**
Wall hung WC Pan



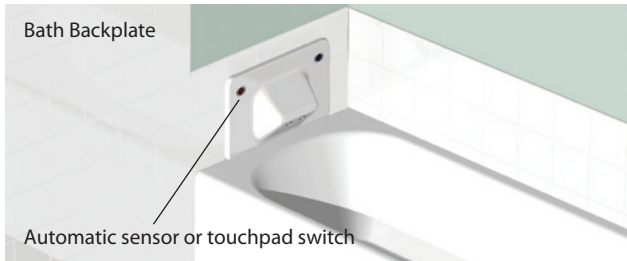
Order Code: **HSWHB-INT**
High Security Integrated Basin & Backplate



Order Code: **HSWHB-ST-INT**
High Security Integrated Single Tap Basin & Backplate



Order Code: **HSBP-BASIN**
Remote Backplate for Basin



Order Code: **HSBP-BATH**
Remote Backplate for Bath

Anti-ligature Sensors or Touchpads for High Security Basin & Backplates

These TPTS sensors or touchpad switches fit into the backplate

No Touch Sensors

Touchpad Switches



For additional information visit:
robertpearson.co.uk/products/security-sanitaryware/

Hydroflow Water Conditioners

Help prevent the build-up of encrusting limescale in plumbing systems

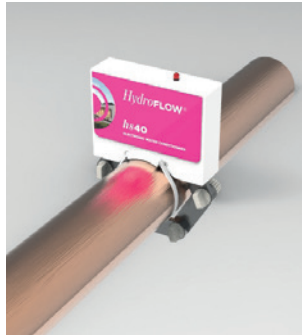
- No plumbing, maintenance or chemicals required
- Improve energy efficiency on hot water heating systems and prolong the life of plumbing equipment in hard water areas
- Help remove existing scale build-up – just 3mm of limescale can add 20% to your heating bills!
- Commercial Units available for pipe sizes up to 200mm outside diameter. We can custom build models to suit any larger size pipe

Domestic Unit



Order Code: **HS38**

Domestic/Light Commercial



Order Code: **HS40**

For additional information visit:
robertpearson.co.uk/products/limescale-control/

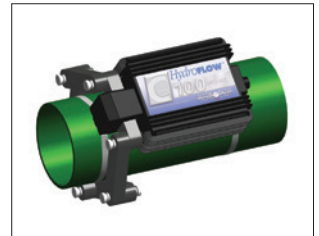
Commercial Units



Order Code: **C32**



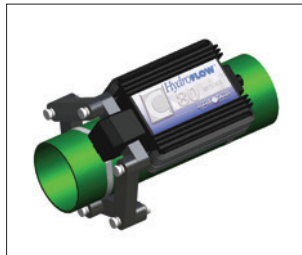
Order Code: **C65**



Order Code: **C100**



Order Code: **C40**



Order Code: **C80**



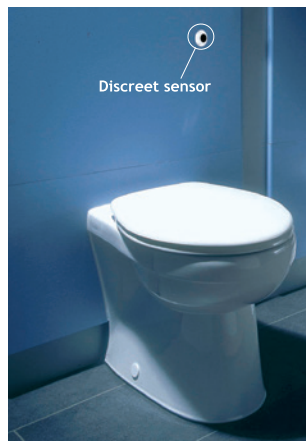
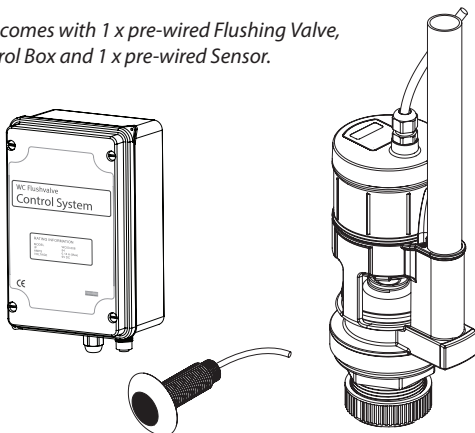
Order Code: **C125**

Swipe Type "No-Touch" Sensor WC Flushvalves

Simply put your hand within 50mm (2") of sensor to activate flush

Up to 50% water savings compared to some conventional siphonic flushing systems

Each kit comes with 1 x pre-wired Flushing Valve,
1 x Control Box and 1 x pre-wired Sensor.



38mm Chrome Bezel Kit

Mains Powered Order Code:

WCFV-io

Battery Powered Order Code:

WCFV-B

38mm Stainless Steel Bezel Kit

Mains Powered Order Code:

WCFV-io-SS

Battery Powered Order Code:

WCFV-B-SS

38mm Matt Black 3 Bezel Kit

Mains Powered Order Code:

WCFV-io-PCMB3

Battery Powered Order Code:

WCFV-B-PCMB3



Other RAL colours available

50mm Chrome Bezel Kit

Mains Powered Order Code:

WCFV-io (50)

Battery Powered Order Code:

WCFV-B (50)

50mm Stainless Steel Bezel Kit

Mains Powered Order Code:

WCFV-io-SS (50)

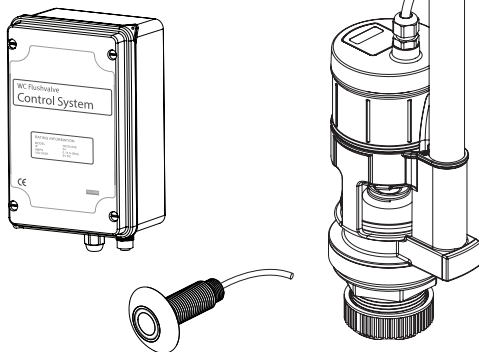
Battery Powered Order Code:

WCFV-B-SS (50)

For additional information visit:
robertpearson.co.uk/products/sensor-wc-flush/

Electronic Touchpad WC Flushvalves

Each kit comes with 1 x pre-wired Flushing Valve,
1 x Control Box and 1 x pre-wired Touchpad.



50mm Stainless Steel Touchpad Kit

Mains Powered Order Code:

WCFV-io-TPS

Battery Powered Order Code:

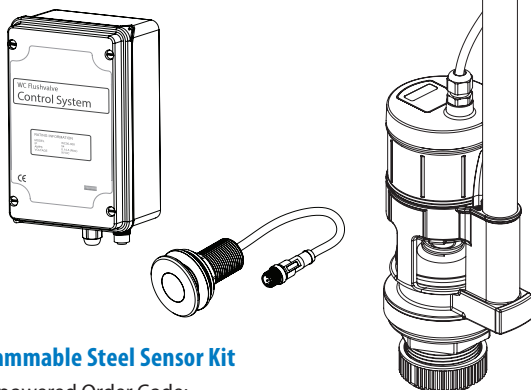
WCFV-B-TPS

Programmable "Auto" Sensor WC Flushvalves

Automatically flushes WC when person moves away



Each kit comes with 1 x pre-wired Flushing Valve,
1 x Control Box and 1 x pre-wired Programmable Sensor.



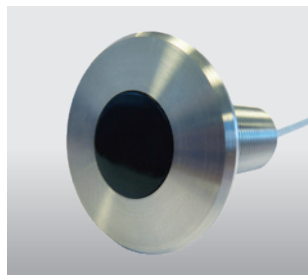
Programmable Steel Sensor Kit

Mains powered Order Code:

PsensWC-AUTO-M

Battery powered Order Code:

PsensWC-AUTO-B

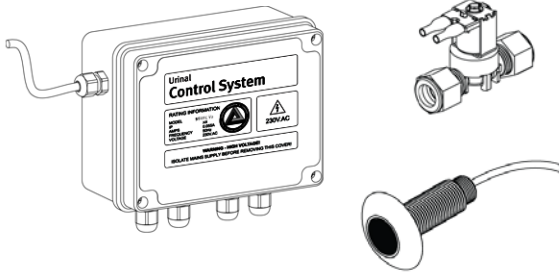


For additional information visit:
robertpearson.co.uk/products/programmable-sensors/

Automatic Sensor Operated Urinal Flushvalves

Up to 90% water savings. Can help achieve Wat 1 BREEAM Points

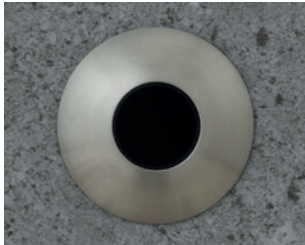
Each kit comes with 1 x pre-wired Solenoid Valve, 1 x Control Box and 1 x pre-wired Sensor.



50mm Stainless Steel Bezel Kit

Order Code: Standard HP 0.5 Bar - 6 Bar
SBUFC(V2)-M/HP/SS

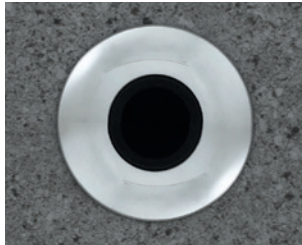
Order Code: Optional LP 0 Bar - 0.5 Bar max
SBUFC(V2)-M/LP/SS



50mm Chrome Bezel Kit

Order Code: Standard HP 0.5 Bar - 6 Bar
SBUFC(V2)-M/HP/CHROME

Order Code: Optional LP 0 Bar - 0.5 Bar max
SBUFC(V2)-M/LP/CHROME



50mm Matt Black 3 Bezel Kit

Order Code: Standard HP 0.5 Bar - 6 Bar
SBUFC(V2)-M/HP/PCMB3

Order Code: Optional LP 0 Bar - 0.5 Bar max
SBUFC(V2)-M/LP/PCMB3



Other RAL colours available



36mm Flat Steel Bezel Kit

Order Code: Standard HP 0.5 Bar - 6 Bar
SBUFC(V2)-M/HP/36mm

Order Code: Optional LP 0 Bar - 0.5 Bar max
SBUFC(V2)-M/LP/36mm

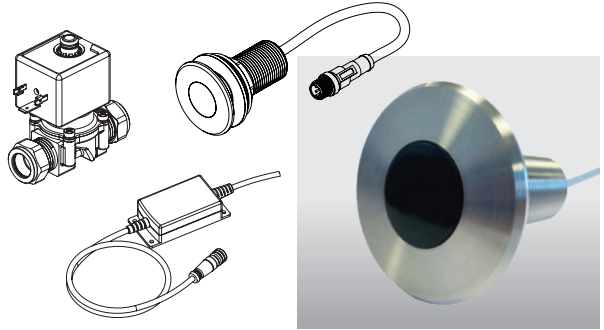
For additional information visit:
robertpearson.co.uk/products/urinal-flushvalves/

Programmable Sensor Operated Urinal Flushvalves

Automatically flushes individual urinal bowl when person moves away



Each kit comes with 1 x pre-wired Programmable Sensor, 1 x pre-wired Solenoid Valve and 1 x pre-wired 6vPSU.



Programmable Steel Sensor Kit

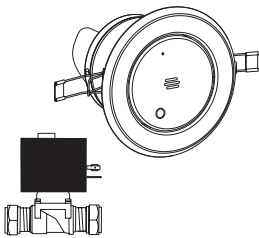
Mains Order Code: PsensU-M

For additional information visit:
robertpearson.co.uk/products/programmable-sensors/

PIR Urinal Flush Controls

Single PIR controls the water flow to a small range of urinal bowls

Each kit comes with PIR Sensor, Solenoid Valve and 6v Transformer or Battery Pack.



Ceiling Surface Mounted PIR

Mains Powered Order Code: **FMM**

Battery Powered Order Code: **FMB**



For additional information visit:
robertpearson.co.uk/products/pir-urinal-controls/

Ceiling Recessed PIR (80mm dia)

Mains Powered Order Code: **PDLM**

Battery Powered Order Code: **PDLB**



Ceiling Recessed PIR (128mm dia)

Mains Powered Order Code: **DLM**

Battery Powered Order Code: **DLB**



Proximity Detection Shut Off Valves

The Problem: Leaking and damaged ball valves and taps etc. are not only an expensive waste of water, but also pose a risk of serious damage from flooding.

The Solution: When the PIR switch detects that the room is occupied, it will automatically turn the water supply and lights etc. "ON" so the appliances work as normal.

PIR Occupancy Switches

Turns lights/valves etc. ON only when the room is occupied. Up to 70% energy savings

- Will switch any lighting load up to 6amps or 1500w or any motor load up to 1amp or 250w
- Adjustable time overrun from 10 seconds to 40 minutes—adjustable "Lux" sensor



Ceiling Recessed PIR Switch

Order Code: PIR/D/REC



Ceiling Mounted PIR Switch

Order Code: PIR/D/SM



Wall Mounted PIR Switch

Order Code: PIR/D/WM

Normally Closed WRAS Solenoid Valves

Water saving. Can help achieve BREEAM Wat 4 credits

- 230v standard (optional 12v and 24v on request)
- ½" – 2" size valves available
- Optional valves with manual override
- Optional **normally open valves** also available (need to be controlled by remote switch rather than PIR)

Magnetic Valve Opener



- Allows you to temporarily energise the solenoid valve
- Available in 3 sizes for ½" – 2" size valves



For additional information visit:
robertpearson.co.uk/products/water-shut-off-valves/

Actuated Valves

Water saving. Can help achieve BREEAM Wat 4 credits

Actuated Failsafe Open/Failsafe Close WRAS Butterfly Valves



Our failsafe actuator uses an internal capacitor to achieve 'Failsafe' functionality on loss of power.

Failsafe Close: The actuator powers **Open** the valve and then on removing power, the capacitor will return the valve to the **Failsafe Close** position.

Failsafe Open: The actuator powers **Close** the valve and then on removing power, the capacitor will return the valve to the **Failsafe Open** position.

- Power Open / Power Close option available
- 230v standard (optional 12v and 24v on request)
- 2" – 16" size WRAS Butterfly Valves
- Lugged or Wafer WRAS Butterfly Valve options



Actuated Failsafe Open/Failsafe Close WRAS Ball Valves



Our failsafe actuator uses an internal capacitor to achieve 'Failsafe' functionality on loss of power.

Failsafe Close: The actuator powers **Open** the valve and then on removing power, the capacitor will return the valve to the **Failsafe Close** position.

Failsafe Open: The actuator powers **Close** the valve and then on removing power, the capacitor will return the valve to the **Failsafe Open** position.

- Power Open / Power Close option available
- 230v standard (optional 12v and 24v on request)
- ½" – 2" size WRAS Ball Valves available



Actuated Failsafe Open/Failsafe Close Ball Valves



Our failsafe actuator uses an internal capacitor to achieve 'Failsafe' functionality on loss of power.

Failsafe Close: The actuator powers **Open** the valve and then on removing power, the capacitor will return the valve to the **Failsafe Close** position.

Failsafe Open: The actuator powers **Close** the valve and then on removing power, the capacitor will return the valve to the **Failsafe Open** position.

- Power Open / Power Close option available
- 230v standard (optional 12v and 24v on request)
- ½" – 4" size Ball Valves available

For additional information visit:
robertpearson.co.uk/products/actuated-valves/

Projects carried out in 2018 include:

Restaurants / Bars / Clubs

Nandos
McDonalds
Zizzi
Wahaca
Five Guys
Belushis

Offices

The Gherkin (London)
Goldman Sachs (HQ) (London)
Blackrock UK (HQ) (London)
Verde Building (London)
Southbank Place (London)
Economist Plaza (London)
Chubb Building (London)
Abcam HQ (Cambridge)
IBM (Warwick)
"Can of Ham" (London)
100 Bishopsgate (London)
1 Bank Street (Canary Wharf)
Kings Cross R1 (London)
Soho House (London)
Google (London)

Factories / Industrial

ABP Food Group (Ireland)
Gs Fresh Beetroot (Norfolk)
LSH Mercedes (Birmingham)

Arts / Entertainment

BBC
Tricycle Theatre (London)

Empire Cinema (Hemel Hempstead)
V&A Museum (Dundee)
Bristol Old Vic
Theatre Royal Stratford East

Sports Centres

Twickenham Stadium
All England Lawn Tennis Club
Beacon of Light (Sunderland)
Brackley Leisure Centre
The Hive Leisure Centre (Ely)
Tottenham Hotspur Training Ground
Grasshoppers Rugby Football Club

Hotels

Strand Palace Hotel (London)
The Lensbury (Teddington)
Crown Plaza (Nottingham)
Hampton by Hilton (Belfast)
One Bishopsgate Plaza (London)
Hoxton Hotel (London)
Sandford Springs Hotel & Golf Club

Education

Tinbergen Building (Oxford Uni)
Oxstalls Campus (Gloucester Uni)
Fry Building (Bristol University)
Francis Holland School (London)
Riverside School (Goole)
Harris Academy (Dundee)
Park Spring School (Leeds)
Greenford High School
Garth Hill College (Bracknell)

University College School (London)
University of Warwick
Tonbridge School
Heriot Watt University (Edinburgh)

Hospitals / Healthcare

Cheswold Park Hospital (Doncaster)
St John of God's Hospital (Dublin)
Priory Hospital Group
Sturdee Community Hospital
NUA Healthcare (Ireland)
Oak Tree Manor (Tendering)
East Lothian Community Hospital

Government

Dundee City Council
Royal Parks (London)
Horne Army Barracks (Larkhill)
DNRC, Stanford Hall (Leics)
MOD (London)
MOD RAF Marham (Norfolk)
Middlesbrough Town Hall
Charing Cross Police Station

Retail

Westfield Shopping Centres
Marks & Spencers
Aldi (HQ) (Atherstone)

Transport

Network Rail
Shannon Airport (Ireland)
Wigan Bus Station



Not applicable to all products. For full details of WRAS and ECA approved products please contact us



ROBERT PEARSON & COMPANY LTD

Post Office House, Post Office Lane
Stockton, Warminster
Wiltshire BA12 0SE

Telephone: (01985) 850954

Facsimile: (01985) 850112

E-Mail: sales@robertpearson.co.uk

Website: www.robertpearson.co.uk