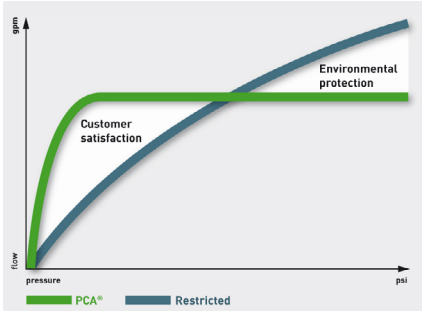


Cascade® model combined aerator and flow regulator

NO PLUMBING REQUIRED | WATER & ENERGY SAVING | EVEN WATER DISTRIBUTION

Simply replace existing tap aerator or flow straightener

Neoperl Cascade® Aerator | PCA® (Pressure Compensating) Model



Water consumption: as much as necessary (customer satisfaction), but only as little as possible (environmental protection).

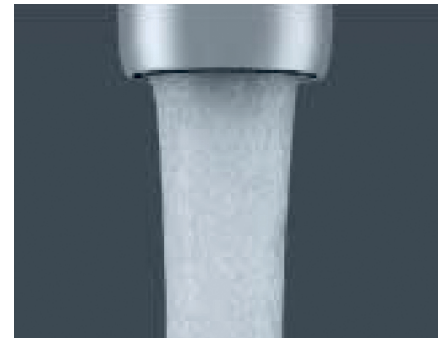
PCA® versions provide a constant & maximum flow rate irrespective of pressure fluctuations

All Neoperl PCA® inserts are equipped with a flow regulator. The flow regulator is composed of a **colour-coded body** and a **dynamic o-ring**. The o-ring reacts to pressure change and alters its shape to adjust the amount of water flowing through the flexible gap.

Operating water pressure 1 Bar to 6 Bar

Where flow rates are stated in gallons/min (**gpm max.**) this refers to a US gallon (3.8 litre/min approx.) and the flow rate will not exceed that stated providing the water pressure is correct. Where flow rates are stated in litres/min (**l/min**) this is subject to ±10% deviation.

RP/CAAFR Cascade | Pressure Compensating Flow Regulator & Aerator



CASCADE® FEATURES

- superior lime protection
- extended life
- perfect stream quality
- very low noise level
- damage proof: unlike conventional wire mesh screens, the CASCADE® structure cannot be crushed
- integrated anti-clogging dome screen; filters sediments and particles

NEOPERL® AERATORS

- control the stream straightness and diameter
- reduce splash by aerating the stream and eliminating side spray
- save water and reduce energy costs
- meet local plumbing codes and standards

Available Sizes and housings

STANDARD (STD)

Female M22

Male M24

US Female 55/64"-27 UNS-2B

US Male 15/16"-27 UNS-2A

Dual Thread 15/16"-27/ 55/64"-27

Euro Male (with side flats) 15/16"-27

Tamper-Proof Housings available for Standard (STD) inserts

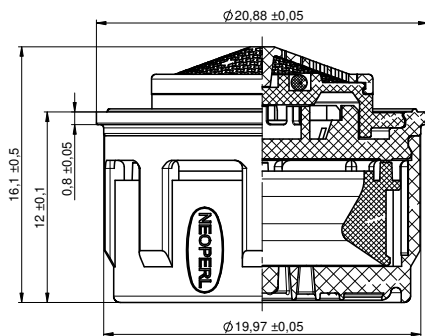
Rotating sleeve construction to make the insert and housing tamper-proof. Special key is required for removal.



Standard (STD) Size PCA® (LF) Model – Pressure Compensating Aerator

The pressure compensating flow regulator produces – by means of the o-ring – an almost constant flow rate regardless of pressure fluctuations.

STD Cascade® for water pressure 1 bar – 6 bar

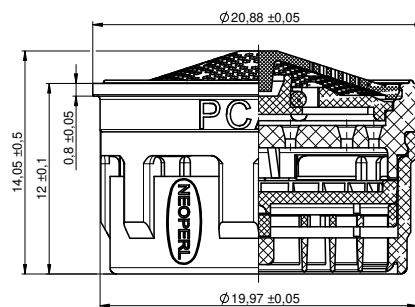


Standard (STD) Size PCA® (LF) Models			Order Codes		
Flow Rate (± 10%) Litres/min	Flow Rate US gallons/min	Colour Code	Standard (STD) Insert only	c/w Female M22 Housing & Washer	c/w Male M24 Housing & Washer
	0.35 gpm max.	Brown	RP/40.1068.000	RP/40.1068.023	RP/40.1068.033
	0.5 gpm max.	Lime	RP/40.1059.000	RP/40.1059.023	RP/40.1059.033

Standard (STD) Size PCA® Model – Pressure Compensating Aerator

The pressure compensating flow regulator produces – by means of the o-ring – an almost constant flow rate regardless of pressure fluctuations.

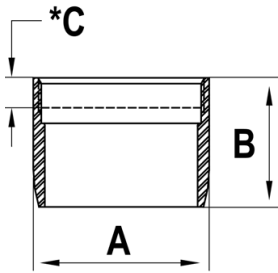
STD Cascade® for water pressure 1 bar – 6 bar



Standard (STD) Size PCA® Models			Order Codes		
Flow Rate (± 10%) Litres/min	Flow Rate US gallons/min	Colour Code	Standard (STD) Insert only	c/w Female M22 Housing & Washer	c/w Male M24 Housing & Washer
	1.0 gpm max.	Blue	RP/40.1058.000	RP/40.1058.023	RP/40.1058.033
	1.2 gpm max.	Pink	RP/40.1060.000	RP/40.1060.023	RP/40.1060.033
5.0 l/min		Orange	RP/40.1051.000	RP/40.1051.023	RP/40.1051.033
	1.5 gpm max.	Green	RP/40.1056.000	RP/40.1056.023	RP/40.1056.033
6.0 l/min		Black	RP/40.1052.000	RP/40.1052.023	RP/40.1052.033
	1.75 gpm max.	Light Blue	RP/40.1061.000	RP/40.1061.023	RP/40.1061.033
7.0 l/min		Light Green	RP/40.1055.000	RP/40.1055.023	RP/40.1055.033
	2.0 gpm max.	Lilac	RP/40.1057.000	RP/40.1057.023	RP/40.1057.033
	2.2 gpm max.	Yellow	RP/40.1053.000	RP/40.1053.023	RP/40.1053.033
8.0 l/min		White	RP/40.1054.000	RP/40.1054.023	RP/40.1054.033

Neoperl® chrome housings for Standard (STD) CASCADE®

Female M22 Neoperl® chrome housing dimensions for standard (STD) aerator

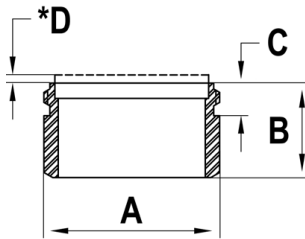


Housing Dimensions		
No	mm	Tolerance
A	23.5	± 0.05
B	17.00	± 0.10
*C	3.90	± 0.40

* Washer stick-in



Male M24 Neoperl® chrome housing dimensions for standard (STD) aerator



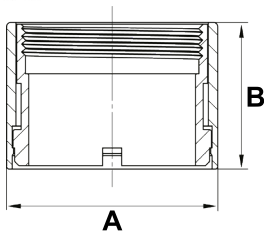
Housing Dimensions		
No	mm	Tolerance
A	23.90	± 0.10
B	13.00	± 0.10
C	4.50	± 0.10
*D	1.25	± 0.25

* Washer stick-out



Female M22 Neoperl® tamper proof chrome housing dimensions for standard (STD) aerator

Tamper proof housings require a special key (RP/BX.011C.1) for fitting and removal



Housing Dimensions – Regular Vandal Proof		
No	mm	Tolerance
A	25.50	+ 0.25 / - 0.25
B	17.60	+ 0.25 / - 0.25

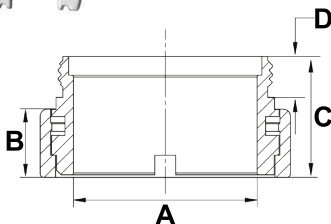


Female M22 tamper proof housings. Part no.: 40.xxxx.513 (xxxx depending on insert)



Male M24 Neoperl® tamper proof chrome housing dimensions for standard (STD) aerator

Tamper proof housings require a special key (RP/BX.011C.1) for fitting and removal



Housing Dimensions – Regular Vandal Proof		
No	mm	Tolerance
A	20.14	+ 0.51 / - 0.51
B	7.49	+ 0.51 / - 0.51
C	13.28	+ 0.51 / - 0.51
D	4.50	+ 0.25 / - 0.25



Male M24 tamper proof housings. Part no.: 40.xxxx.523 (xxxx depending on insert)



ROBERT PEARSON & COMPANY LTD

Post Office House, Post Office Lane
Stockton, Warminster
Wiltshire BA12 0SE

Telephone: (01985) 850954

Facsimile: (01985) 850112

E-Mail: sales@robertpearson.co.uk

Website: www.robertpearson.co.uk