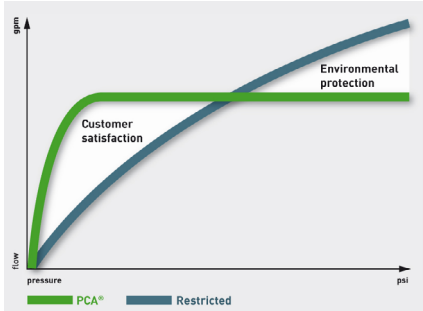


Perlator® Honeycomb model combined laminar and flow regulator

NO PLUMBING REQUIRED | WATER & ENERGY SAVING | EVEN WATER DISTRIBUTION

Simply replace existing tap aerator or flow straightener

Neoperl Perlator® Honeycomb Laminar | PCA® (Pressure Compensating) Model



Water consumption: as much as necessary (customer satisfaction), but only as little as possible (environmental protection).

PCA® versions provide a constant & maximum flow rate irrespective of pressure fluctuations

All Neoperl PCA® inserts are equipped with a flow regulator. The flow regulator is composed of a **colour-coded body** and a **dynamic o-ring**. The o-ring reacts to pressure change and alters its shape to adjust the amount of water flowing through the flexible gap.

Operating water pressure 1 Bar to 6 Bar

Where flow rates are stated in gallons/min (**gpm max.**) this refers to a US gallon (3.8 litre/min approx.) and the flow rate will not exceed that stated providing the water pressure is correct. Where flow rates are stated in litres/min (**l/min**) this is subject to ±10% deviation.

RP/LAMINAR Perlator-HC | Pressure Compensating Flow Regulator



LAMINAR STREAM (PURE)

Laminar stream straighteners produce a non-aerated water stream. Ideal for high-flow applications or health care facilities (no mix of water/air). NEOPERL® laminar spout-end devices deliver a crystal-clear and non-splashing stream.



PERLATOR® HONEYCOMB FEATURES

- extended life
- perfect stream quality even under difficult flow conditions
- very low noise level
- damage proof: unlike conventional wire mesh screens, the HONEYCOMB structure cannot be crushed
- integrated anti-clogging dome screen filters sediments and particles

Available Sizes and housings

STANDARD (STD)

Female M22

Male M24

US Female 55/64"-27 UNS-2B

US Male 15/16"-27 UNS-2A

Dual Thread 15/16"-27/ 55/64"-27

Euro Male (with side flats) 15/16"-27

TOM THUMB (TT)

Female M16

Male M18

IG (female) 3/8"

JUNIOR (JR)

US Female 3/4"-27 UNS-2B

US Male 13/16"-27 UNS-2A

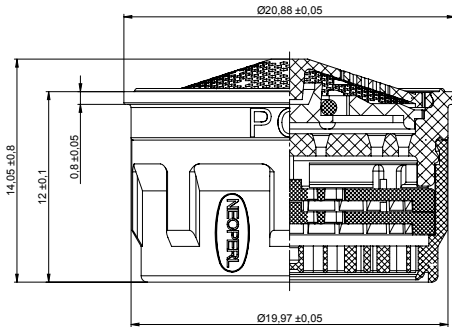
Tamper-Proof Female M22 and Male M24 Housings Available

Rotating sleeve construction to make the insert and housing theft-proof. Special key is required for removal.

Standard (STD) Size PCA® Model – Pressure Compensating

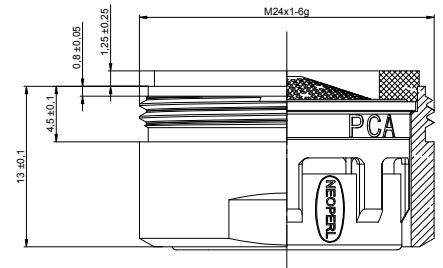
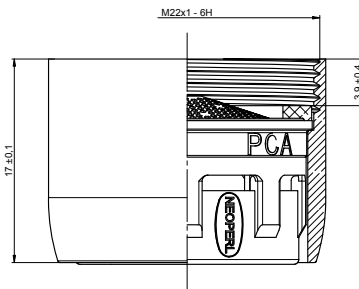
The pressure compensating flow regulator produces – by means of the o-ring – an almost constant flow rate regardless of pressure fluctuations

STD Perlator® Honeycomb Laminar for water pressure 1 bar – 6 bar



Standard (STD) Size PCA® Models			Order Codes		
Flow Rate (± 10%) Litres/min	Flow Rate US gallons/min	Colour Code	Standard (STD) Insert only	c/w Female M22 Housing & Washer	c/w Male M24 Housing & Washer
	0.5 gpm max.	Lime	RP/40.2159.000	RP/40.2159.023	RP/40.2159.033
	1.0 gpm max.	Blue	RP/40.2158.000	RP/40.2158.023	RP/40.2158.033
	1.2 gpm max.	Pink	RP/40.2160.000	RP/40.2160.023	RP/40.2160.033
5.0 l/min		Orange	RP/40.2151.000	RP/40.2151.023	RP/40.2151.033
	1.5 gpm max.	Green	RP/40.2156.000	RP/40.2156.023	RP/40.2156.033
6.0 l/min		Black	RP/40.2152.000	RP/40.2152.023	RP/40.2152.033
	1.75 gpm max.	Light Blue	RP/40.2161.000	RP/40.2161.023	RP/40.2161.033
7.0 l/min		Light Green	RP/40.2155.000	RP/40.2155.023	RP/40.2155.033
	2.0 gpm max.	Lilac	RP/40.2157.000	RP/40.2157.023	RP/40.2157.033
	2.2 gpm max.	Yellow	RP/40.2153.000	RP/40.2153.023	RP/40.2153.033
8.0 l/min		White	RP/40.2154.000	RP/40.2154.023	RP/40.2154.033

Female M22 and Male M24 Neoperl® chrome housing dimensions for standard (STD) insert.



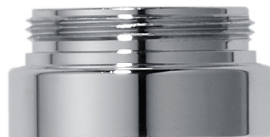
Female M22 and Male M24 Neoperl® tamper proof chrome housings for standard (STD) insert

Tamper proof housings require a special key (RP/BX.011C.1) for fitting and removal



Female M22 tamper proof housings.

Part no.: 40.xxxx.513 (xxxx depending on insert)



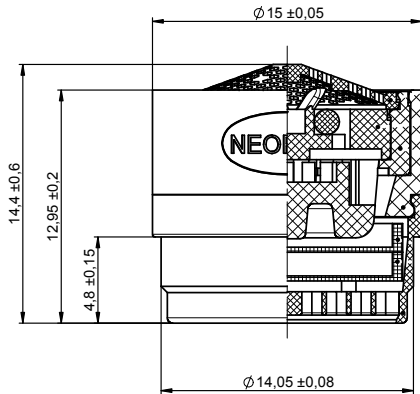
Male M24 tamper proof housings.

Part no.: 40.xxxx.523 (xxxx depending on insert)

Tom Thumb (TT) Size PCA® Model – Pressure Compensating

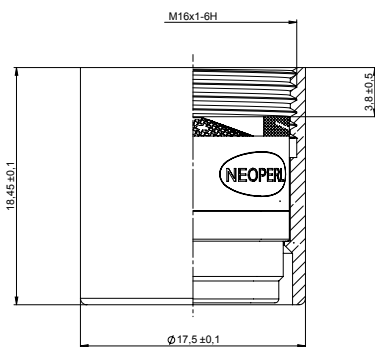
The pressure compensating flow regulator produces – by means of the o-ring – an almost constant flow rate regardless of pressure fluctuations

TT Perlator® Honeycomb Laminae for water pressure 1 bar – 6 bar



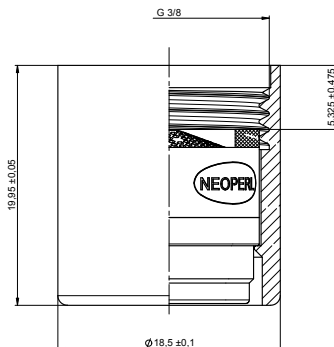
Tom Thumb (TT) Size PCA® Models			Order Codes		
Flow Rate Litres/min (± 10%)	Flow Rate US gallons/min	Colour Code	Tom Thumb (TT) Insert only	c/w Female M16 Housing & Washer	c/w Male M18 Housing & Washer
	1.0 gpm max.	Blue	RP/44.3158.000	RP/44.3158.023	RP/44.3158.033
	1.2 gpm max.	Pink	RP/44.3160.000	RP/44.3160.023	RP/44.3160.033
5.0 l/min		Orange	RP/44.3151.000	RP/44.3151.023	RP/44.3151.033
	1.5 gpm max.	Green	RP/44.3156.000	RP/44.3156.023	RP/44.3156.033
	1.75 gpm max.	Light Blue	RP/44.3161.000	RP/44.3161.023	RP/44.3161.033
7.0 l/min		Light Green	RP/44.3155.000	RP/44.3155.023	RP/44.3155.033
	2.0 gpm max.	Lilac	RP/44.3157.000	RP/44.3157.023	RP/44.3157.033
	2.2 gpm max.	Yellow	RP/44.3153.000	RP/44.3153.023	RP/44.3153.033
8.0 l/min		White	RP/44.3154.000	RP/44.3154.023	RP/44.3154.033

Female M16 / IG 3/8" and Male M18 Neoperl® chrome housing dimensions for Tom Thumb (TT) aerator



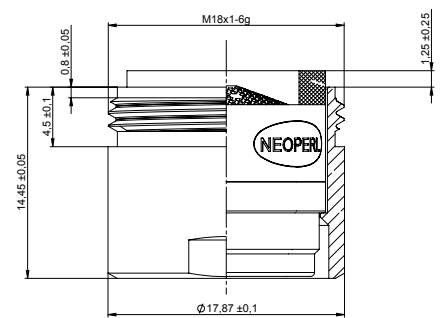
Female M16 housing

Part no.: 44.xxxx.023 (xxxx depending on insert)



IG 3/8" housing

Part no.: 44.xxxx.043 (xxxx depending on insert)



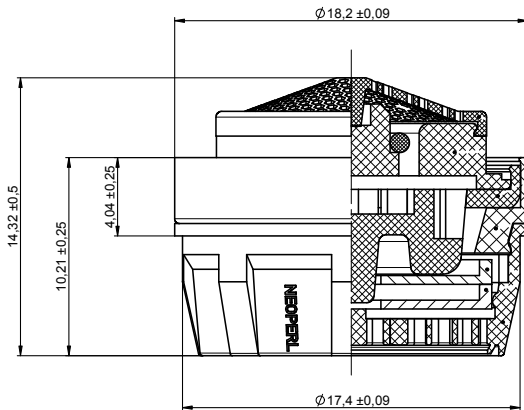
Male M18 housing

Part no.: 44.xxxx.033 (xxxx depending on insert)

Junior (JR) Size PCA® Model – Pressure Compensating

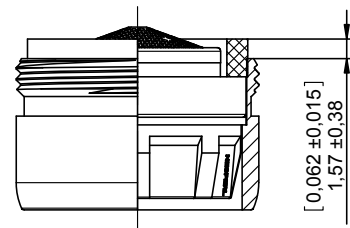
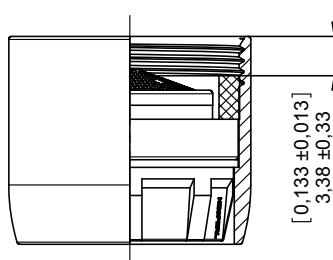
The pressure compensating flow regulator produces – by means of the o-ring – an almost constant flow rate regardless of pressure fluctuations

JR Perlator® Honeycomb Lamina for water pressure 1 bar – 6 bar



Junior (JR) Size PCA® Models			Order Codes		
Flow Rate Litres/min (± 10%)	Flow Rate US gallons/min	Colour Code	Junior (JR) Insert only	Fem 3/4"-27 UNS-2B Housing & Washer	Male 13/16"-27 UNS-2A Housing & Washer
	0.5 gpm max.	Lime	RP/42.3159.000	RP/42.3159.033	RP/42.3159.023
	1.0 gpm max.	Blue	RP/42.3158.000	RP/42.3158.033	RP/42.3158.023
	1.2 gpm max.	Pink	RP/42.3160.000	RP/42.3160.033	RP/42.3160.023
	1.5 gpm max.	Green	RP/42.3156.000	RP/42.3156.033	RP/42.3156.023
	1.75 gpm max.	Light Blue	RP/42.3161.000	RP/42.3161.033	RP/42.3161.023
	2.0 gpm max.	Lilac	RP/42.3157.000	RP/42.3157.033	RP/42.3157.023
	2.2 gpm max.	Yellow	RP/42.3153.000	RP/42.3153.033	RP/42.3153.023

Fem. 3/4"-27 UNS-2B and Male 13/16"-27 UNS-2A Neoperl® chrome housing dims for junior (JR) insert



ROBERT PEARSON & COMPANY LTD

Post Office House, Post Office Lane
Stockton, Warminster
Wiltshire BA12 0SE

Telephone: (01985) 850954
Facsimile: (01985) 850112

E-Mail: sales@robertpearson.co.uk
Website: www.robertpearson.co.uk