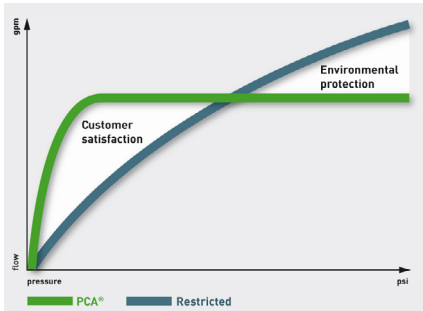


## Slim Air model combined aerator and flow regulator

NO PLUMBING REQUIRED | WATER & ENERGY SAVING | EVEN WATER DISTRIBUTION

THE SLIM AIR INSERT IS SCREWED DIRECTLY INTO A FEMALE THREAD, WHERE SPACE ALLOWS, ELIMINATING THE NEED FOR A HOUSING

### Neoperl Slim Air | PCA® (Pressure Compensating Aerator)



Water consumption: as much as necessary (customer satisfaction), but only as little as possible (environmental protection).

#### PCA® versions provide a constant & maximum flow rate irrespective of pressure fluctuations

All Neoperl PCA® inserts are equipped with a flow regulator. The flow regulator is composed of a **colour-coded body** and a **dynamic o-ring**. The o-ring reacts to pressure change and alters its shape to adjust the amount of water flowing through the flexible gap.

#### Operating water pressure 1 Bar to 6 Bar

Where flow rates are stated in gallons/min (**gpm max.**) this refers to a US gallon (3.8 litre/min approx.) and the flow rate will not exceed that stated providing the water pressure is correct. Where flow rates are stated in litres/min (**l/min**) this is subject to  $\pm 10\%$  deviation.

### RP/SLIM-AIR | Pressure Compensating Flow Regulator



#### NEOPERL® AERATORS

- control the stream straightness and diameter
- reduce splash by aerating the stream and eliminating side spray
- save water and reduce energy costs
- meet local plumbing codes and standards



#### Available Sizes

Standard (**STD**) – M24

#### Available Options

- Adjustable tilting plate (**SSR**)
- Smart Lime Cleaning (**SLC**)
- A combination of both

#### SLIM AIR FEATURES

This product's main characteristic is the extremely low height combined with an excellent aerated stream quality. Another innovative feature is the integration of the water saving PCA® technology. A major advantage of the SLIM Air is its compatibility with existing male M24 tap threads.

The male M24 aerator in your faucet can easily be exchanged with the SLIM Air.

### RP/SLIM-AIR/SSR | Pressure Compensating Flow Regulator c/w Adjustable Stream

Sometimes when a tap is installed with a wash basin, the tap stream direction is less than optimum (water splashing, difficulty rinsing hand). NEOPERL designed the SSR to allow adjustments in the water stream direction on site without having to replace an expensive tap or basin. In the basic position there is no visual difference to the standard version. The angle of the water stream can be adjusted simply by moving the adjustable tilting plate.



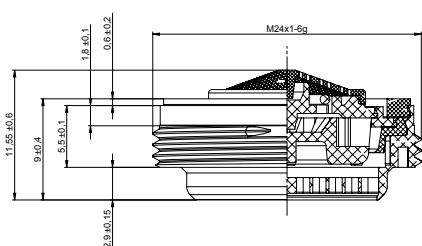
# Standard (STD) Size PCA® Model – Pressure Compensating Aerator

The pressure compensating flow regulator produces – by means of the o-ring – an almost constant flow rate regardless of pressure fluctuations

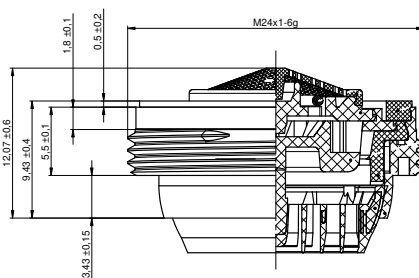
**Available Options—Slim Air** for water pressure 1 bar – 6 bar

Slim Air Inserts			Order Codes			
Flow Rate L/min (± 10%)	Flow Rate: US Gallons/min	Colour Code	Honeycomb Male M24 (STD)	Honeycomb SSR Male M24 (STD)	Cascade SLC Male M24 (STD)	Cascade SLC SSR Male M24 (STD)
	1.2 gpm max.	Pink	RP/40.8360.010	RP/40.8060.010	RP/40.8460.010	RP/40.8160.010
5.0 l/min		Orange	RP/40.8351.010	RP/40.8051.010	RP/40.8451.010	RP/40.8151.010
	1.5 gpm max.	Green	RP/40.8356.010	RP/40.8056.010	RP/40.8456.010	RP/40.8156.010
7.0 l/min		Light Green	RP/40.8355.010	RP/40.8055.010	RP/40.8455.010	RP/40.8155.010
	2.0 gpm max.	Lilac	–	RP/40.8057.010	–	RP/40.8157.010
	2.2 gpm max.	Yellow	RP/40.8353.010	RP/40.8053.010	RP/40.8453.010	RP/40.8153.010
8.0 l/min		White	RP/40.8354.010	RP/40.8054.010	RP/40.8454.010	RP/40.8154.010

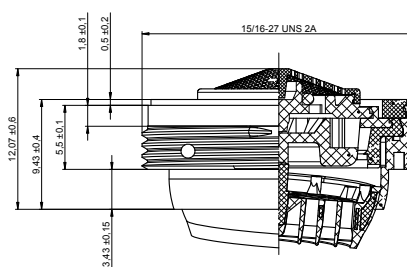
The SLIM AIR insert is screwed directly into a female thread, where space allows, eliminating the need for a housing



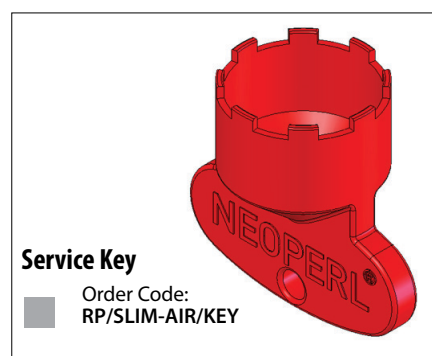
**Honeycomb – M24 Standard (STD) Dims**



**Cascade SLC – M24 Standard (STD) Dims**



**Cascade SLC SSR – M24 Standard (STD) Dims**



## CASCADE® SLC FEATURES

- maximum lime resistance
- no need to remove the aerator for cleaning
- perfect stream quality
- very low noise level
- damage proof: unlike conventional wire mesh screens, the CASCADE® SLC structure cannot be crushed
- integrated anti-clogging dome screen filters sediments and particles



## ROBERT PEARSON & COMPANY LTD

Post Office House, Post Office Lane  
Stockton, Warminster  
Wiltshire BA12 0SE

Telephone: (01985) 850954

Facsimile: (01985) 850112

E-Mail: [sales@robertpearson.co.uk](mailto:sales@robertpearson.co.uk)

Website: [www.robertpearson.co.uk](http://www.robertpearson.co.uk)