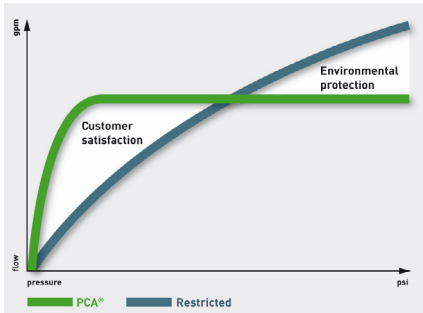


# “In the Rain” Combined Spray and Flow Regulator model

**NO PLUMBING REQUIRED | WATER & ENERGY SAVING | EVEN WATER DISTRIBUTION**

Simply replace existing tap aerator or flow straightener

## Neoperl Spray-ITR | PCA® (Pressure Compensating) Model



Water consumption: as much as necessary (customer satisfaction), but only as little as possible (environmental protection).

### PCA® versions provide a constant & maximum flow rate irrespective of pressure fluctuations

All Neoperl PCA® inserts are equipped with a flow regulator. The flow regulator is composed of a **colour-coded body** and a **dynamic o-ring**. The o-ring reacts to pressure change and alters its shape to adjust the amount of water flowing through the flexible gap.

### Operating water pressure 1 Bar to 6 Bar

Where flow rates are stated in gallons/min (**gpm max.**) this refers to a US gallon (3.8 litre/min approx.) and the flow rate will not exceed that stated providing the water pressure is correct. Where flow rates are stated in litres/min (**l/min**) this is subject to  $\pm 10\%$  deviation.

## RP/Spray-ITC | Pressure Compensating Flow Regulator

The new Neoperl Spray ITR (In-the-Rain) offers a most extraordinary spray stream: a rain spray. Its silicone nozzles provide an extensive, yet soft water stream. Create that shower feeling for taps, for hygienic sprays and, of course, for shower heads by using the Spray ITR.

The insert (with 53 silicone nozzles) is compatible with all M22 and M24 housings according to EN246. It is ideal for a flow range from 1.0 gpm to 1.75 gpm (PCA® models). A flow restrictor version for low pressure applications is also available.



### Available Sizes and housings

#### STANDARD (STD)

Female M22

Male M24

US Female 55/64"-27 UNS-2B

US Male 15/16"-27 UNS-2A

Dual Thread 15/16"-27/ 55/64"-27

Euro Male (with side flats) 15/16"-27

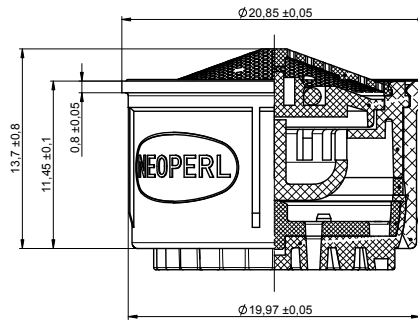
### Tamper-Proof Housings available for Standard (STD) inserts

Rotating sleeve construction to make the insert and housing tamper-proof. Special key is required for removal.

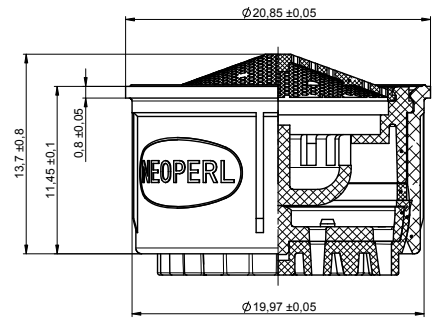
## Standard (STD) Size PCA® Model – Pressure Compensating\*

The pressure compensating flow regulator produces – by means of the o-ring – an almost constant flow rate regardless of pressure fluctuations.

### STD Spray-ITR for water pressure 1 bar – 6 bar



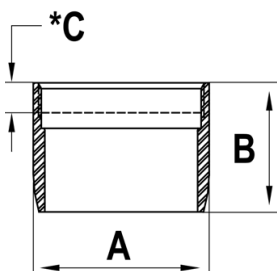
Standard (STD) Insert –PCA® Model



Standard (STD) Insert – Low Pressure Model

Standard (STD) Size PCA® Models			Order Codes		
Flow Rate (± 10%) Litres/min	Flow Rate US gallons/min	Colour Code	Standard (STD) Insert only	c/w Female M22 Housing & Washer	c/w Male M24 Housing & Washer
	1.0 gpm max.	Blue	RP/40.7A58.000	RP/40.7A58.023	RP/40.7A58.033
	1.2 gpm max.	Pink	RP/40.7A60.000	RP/40.7A60.023	RP/40.7A60.033
5.0 l/min		Orange	RP/40.7A51.000	RP/40.7A51.023	RP/40.7A51.033
	1.5 gpm max.	Green	RP/40.7A56.000	RP/40.7A56.023	RP/40.7A56.033
	1.75 gpm max.	Light Blue	RP/40.7A61.000	RP/40.7A61.023	RP/40.7A61.033
7.0 l/min		Light Green	RP/40.7A55.000	RP/40.7A55.023	RP/40.7A55.033
*Low Pressure Model with Restrictor			Order Codes		
Flow Rate		Colour Code	Standard (STD) Insert only	c/w Female M22 Housing & Washer	c/w Male M24 Housing & Washer
V	optimal performance from 0.2 to 1 bar	Blue	RP/40.7A30.000	RP/40.7A30.023	RP/40.7A30.033

### Female M22 Neoperl® chrome housing dimensions for standard (STD) insert

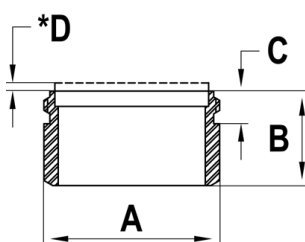


Housing Dimensions		
No	mm	Tolerance
A	23.5	± 0.05
B	17.00	± 0.10
*C	3.90	± 0.40

\* Washer stick-in



### Male M24 Neoperl® chrome housing dimensions for standard (STD) insert



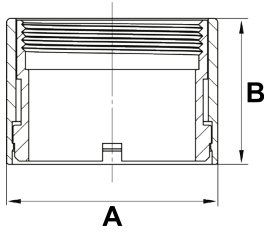
Housing Dimensions		
No	mm	Tolerance
A	23.90	± 0.10
B	13.00	± 0.10
C	4.50	± 0.10
*D	1.25	± 0.25





## Female M22 Neoperl® tamper proof chrome housing dimensions for standard (STD) insert

Tamper proof housings require a special key (**RP/BX.011C.1**) for fitting and removal



Housing Dimensions – Regular Vandal Proof		
No	mm	Tolerance
A	25.50	+ 0.25 / - 0.25
B	17.60	+ 0.25 / - 0.25

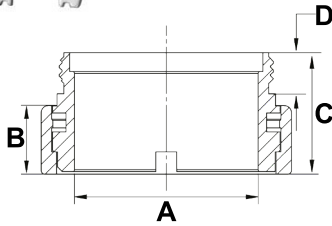


Female M22 tamper proof housings. Part no.: 40.xxxx.513 (xxxx depending on insert)



## Male M24 Neoperl® tamper proof chrome housing dimensions for standard (STD) insert

Tamper proof housings require a special key (**RP/BX.011C.1**) for fitting and removal



Housing Dimensions – Regular Vandal Proof		
No	mm	Tolerance
A	20.14	+ 0.51 / - 0.51
B	7.49	+ 0.51 / - 0.51
C	13.28	+ 0.51 / - 0.51
D	4.50	+ 0.25 / - 0.25



Male M24 tamper proof housings. Part no.: 40.xxxx.523 (xxxx depending on insert)



## ROBERT PEARSON & COMPANY LTD

Post Office House, Post Office Lane  
Stockton, Warminster  
Wiltshire BA12 0SE

Telephone: (01985) 850954  
Facsimile: (01985) 850112  
E-Mail: [sales@robertpearson.co.uk](mailto:sales@robertpearson.co.uk)  
Website: [www.robertpearson.co.uk](http://www.robertpearson.co.uk)