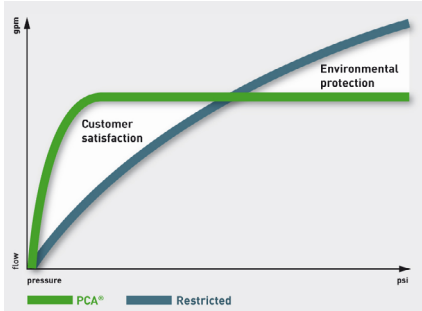


Combined Spray and Flow Regulator model

NO PLUMBING REQUIRED | WATER & ENERGY SAVING | EVEN WATER DISTRIBUTION

Simply replace existing tap aerator or flow straightener

Neoperl Spray | PCA® (Pressure Compensating) Model



PCA® versions provide a constant & maximum flow rate irrespective of pressure fluctuations

All Neoperl PCA® inserts are equipped with a flow regulator. The flow regulator is composed of a **colour-coded body** and a **dynamic o-ring**. The o-ring reacts to pressure change and alters its shape to adjust the amount of water flowing through the flexible gap.

Operating water pressure 1 Bar to 6 Bar

Where flow rates are stated in gallons/min (**gpm max.**) this refers to a US gallon (3.8 litre/min approx.) and the flow rate will not exceed that stated providing the water pressure is correct. Where flow rates are stated in litres/min (**l/min**) this is subject to $\pm 10\%$ deviation.

Water consumption: as much as necessary (customer satisfaction), but only as little as possible (environmental protection).

RP/Spray PCA | Pressure Compensating Flow Regulator



NEOPERL® SPRAY FEATURES

- good water dispersion at low flow rates.
- pressure compensating for near-constant flow from 1 bar to 6 bar
- supplies all outlets evenly with water
- integrated anti-clogging dome screen filters sediments and particles
- virtually unbreakable single piece insert ensures a longer useable life

Available Sizes and housings

STANDARD (STD)

Female M22

Male M24

US Female 55/64"-27 UNS-2B

US Male 15/16"-27 UNS-2A

Dual Thread 15/16"-27/ 55/64"-27

Euro Male (with side flats) 15/16"-27

TOM THUMB (TT)

Female M16

Male M18

IG (female) 3/8"

JUNIOR (JR)

US Female 3/4"-27 UNS-2B

US Male 13/16"-27 UNS-2A

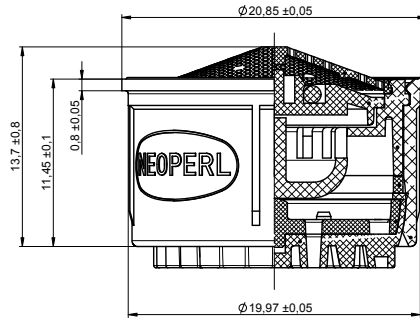
Tamper-Proof Housings available for Standard (STD) inserts

Rotating sleeve construction to make the insert and housing tamper-proof. Special key is required for removal.

Standard (STD) Size PCA® Model – Pressure Compensating

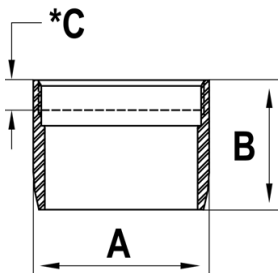
The pressure compensating flow regulator produces – by means of the o-ring – an almost constant flow rate regardless of pressure fluctuations.

STD Spray for water pressure 1 bar – 6 bar



Standard (STD) Size PCA® Models			Order Codes		
Flow Rate ($\pm 10\%$) Litres/min	Flow Rate US gallons/min	Colour Code	Standard (STD) Insert only	c/w Female M22 Housing & Washer	c/w Male M24 Housing & Washer
	0.35 gpm max.	Brown	RP/A5.9041.1	RP/A5.9141.0	RP/A5.9241.0
	0.5 gpm max.	Lime	RP/A5.9042.1	RP/A5.9142.0	RP/A5.9242.0
2.0 l/min		Black	RP/A5.9043.1	RP/A5.9143.0	RP/A5.9243.0
2.5 l/min		Green	RP/A5.9044.1	RP/A5.9144.0	RP/A5.9244.0
3.0 l/min		Lilac	RP/A5.9045.1	RP/A5.9145.0	RP/A5.9245.0
	1.0 gpm max.	Blue	RP/A5.9046.1	RP/A5.9146.0	RP/A5.9246.0
4.0 l/min		Pink	RP/A5.9047.1	RP/A5.9147.0	RP/A5.9247.0
5.0 l/min		Red	RP/A5.9049.1	RP/A5.9149.0	RP/A5.9249.0

Female M22 Neoperl® chrome housing dimensions for standard (STD) insert

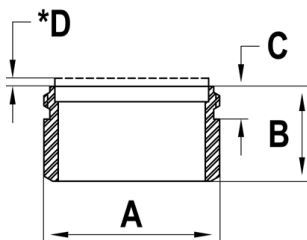


Housing Dimensions		
No	mm	Tolerance
A	23.5	± 0.05
B	17.00	± 0.10
*C	3.90	± 0.40

* Washer stick-in



Male M24 Neoperl® chrome housing dimensions for standard (STD) insert



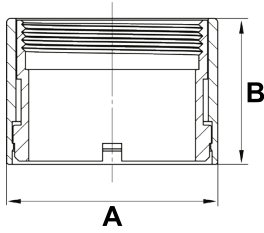
Housing Dimensions		
No	mm	Tolerance
A	23.90	± 0.10
B	13.00	± 0.10
C	4.50	± 0.10
*D	1.25	± 0.25





Female M22 Neoperl® tamper proof chrome housing dimensions for standard (STD) insert

Tamper proof housings require a special key (RP/BX.011C.1) for fitting and removal



Housing Dimensions – Regular Vandal Proof		
No	mm	Tolerance
A	25.50	+ 0.25 / - 0.25
B	17.60	+ 0.25 / - 0.25

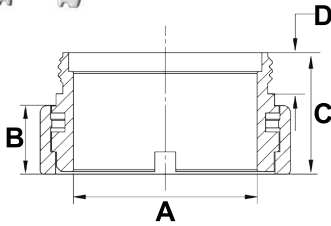


Female M22 tamper proof housings. Part no.: 40.xxxx.513 (xxxx depending on insert)



Male M24 Neoperl® tamper proof chrome housing dimensions for standard (STD) insert

Tamper proof housings require a special key (RP/BX.011C.1) for fitting and removal



Housing Dimensions – Regular Vandal Proof		
No	mm	Tolerance
A	20.14	+ 0.51 / - 0.51
B	7.49	+ 0.51 / - 0.51
C	13.28	+ 0.51 / - 0.51
D	4.50	+ 0.25 / - 0.25



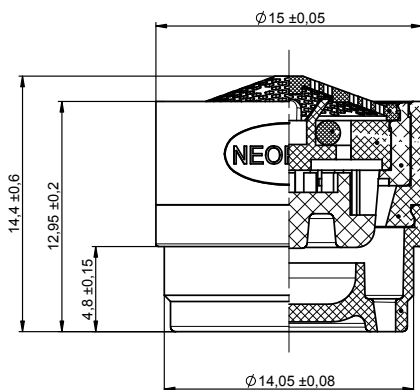
Male M24 tamper proof housings. Part no.: 40.xxxx.523 (xxxx depending on insert)

Tom Thumb (TT) Size PCA® Model – Pressure Compensating

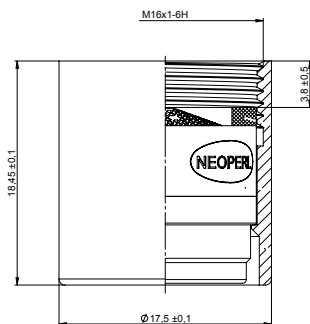
The pressure compensating flow regulator produces – by means of the o-ring – an almost constant flow rate regardless of pressure fluctuations

Tom Thumb (TT) Size PCA® Models		Order Codes		
Flow Rate US gallons/min	Colour Code	Standard (STD) Insert only	c/w Female M16 Housing & Washer	c/w Male M18 Housing & Washer
0.35 gpm max.	Brown	RP/44.7168.000	RP/44.7168.023	RP/44.7168.033
0.5 gpm max.	Lime	RP/44.7159.000	RP/44.7159.023	RP/44.7159.033
1.0 gpm max.	Blue	RP/44.7158.000	RP/44.7158.023	RP/44.7158.033

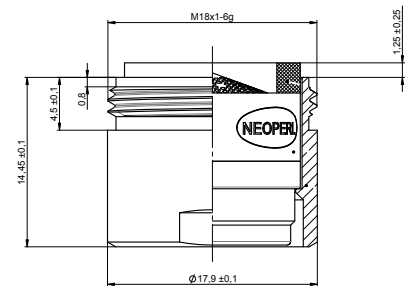
TT Spray 1 bar – 6 bar



Female M16 and Male M18 Neoperl® chrome housing dimensions for Tom Thumb (TT) insert



Female M16 housing



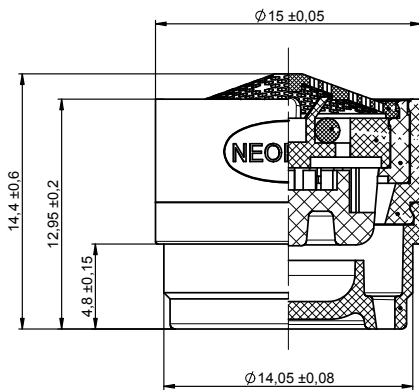
Male M18 housing

Junior (JR) Size PCA® Model – Pressure Compensating

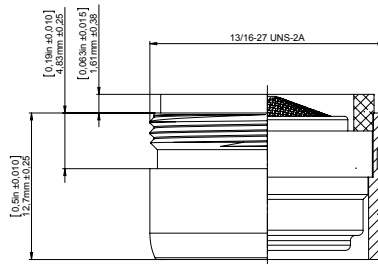
The pressure compensating flow regulator produces – by means of the o-ring – an almost constant flow rate regardless of pressure fluctuations

Junior (JR) Size PCA® Models			Order Codes	
Flow Rate Litres/min (± 10%)	Flow Rate US gallons/min	Colour Code	Junior (JR) Insert only	Male 13/16"-27 UNS-2A Housing & Washer
0.35 gpm max.		Brown	RP/A5.9037.1	RP/44.7068.033
0.5 gpm max.		Lime	RP/A5.9035.1	RP/44.7059.033
1.0 gpm max.		Blue	RP/A5.9036.1	RP/44.7058.033

JR Spray 1 bar – 6 bar



Male 13/16" Neoperl® chrome housing dimensions for junior (JR) insert



ROBERT PEARSON & COMPANY LTD

Post Office House, Post Office Lane
Stockton, Warminster
Wiltshire BA12 0SE

Telephone: (01985) 850954
Facsimile: (01985) 850112

E-Mail: sales@robertpearson.co.uk
Website: www.robertpearson.co.uk