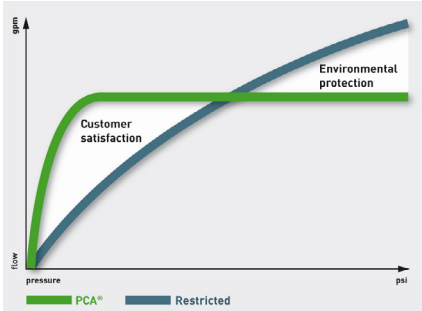


## Combined Spray **SLC** and Flow Regulator model

**NO PLUMBING REQUIRED | WATER & ENERGY SAVING | EVEN WATER DISTRIBUTION**

Simply replace existing tap aerator or flow straightener

### Neoperl Spray-SLC | **PCA® (Pressure Compensating) Model**



#### PCA® versions provide a constant & maximum flow rate irrespective of pressure fluctuations

All Neoperl PCA® inserts are equipped with a flow regulator. The flow regulator is composed of a **colour-coded body** and a **dynamic o-ring**. The o-ring reacts to pressure change and alters its shape to adjust the amount of water flowing through the flexible gap.

#### Operating water pressure 1 Bar to 6 Bar

Where flow rates are stated in gallons/min (**gpm max.**) this refers to a US gallon (3.8 litre/min approx.) and the flow rate will not exceed that stated providing the water pressure is correct. Where flow rates are stated in litres/min (**l/min**) this is subject to ±10% deviation.

Water consumption: as much as necessary (customer satisfaction), but only as little as possible (environmental protection).

### RP/Spray-SLC | **Pressure Compensating Flow Regulator**



#### SLC (SMART LIME CLEANING)

#### NEOPERL® SPRAY-SLC FEATURES

- good water dispersion at low flow rates.
- pressure compensating for near-constant flow from 1 bar to 6 bar
- supplies all outlets evenly with water
- integrated anti-clogging dome screen filters sediments and particles
- virtually unbreakable single piece insert ensures a longer useable life

- soft elastomer layer: lime deposits can easily be rubbed off
- closed inner nozzle ring for flow class 0.35 gpm

### Available Sizes and housings

#### STANDARD (STD)

Female M22  
Male M24

US Female 55/64"-27 UNS-2B  
US Male 15/16"-27 UNS-2A  
Dual Thread 15/16"-27/ 55/64"-27  
Euro Male (with side flats) 15/16"-27

#### TINY JUNIOR (TJ)

Female M19  
Male M20

#### JUNIOR (JR)

US Female 3/4"-27 UNS-2B  
US Male 13/16"-27 UNS-2A

#### Tamper-Proof Housings available for Standard (STD) inserts

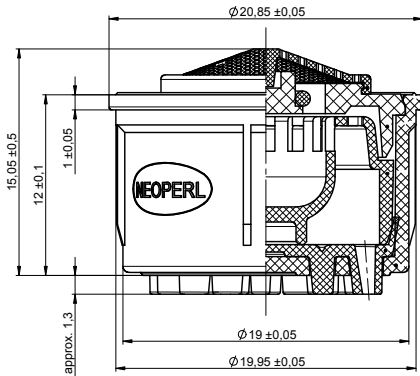
Rotating sleeve construction to make the insert and housing tamper-proof. Special key is required for removal.

**Compact Tamper Proof Male M24 housing** is compatible only with **TINY JUNIOR (TJ)** Inserts

# Standard (STD) Size PCA® Model – Pressure Compensating

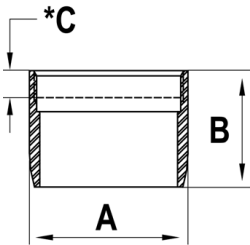
The pressure compensating flow regulator produces – by means of the o-ring – an almost constant flow rate regardless of pressure fluctuations.

## STD Spray-SLC for water pressure 1 bar – 6 bar



Standard (STD) Size PCA® Models			Order Codes		
Flow Rate (± 10%) Litres/min	Flow Rate US gallons/min	Colour Code	Standard (STD) Insert only	c/w Female M22 Housing & Washer	c/w Male M24 Housing & Washer
	0.35 gpm max.	Brown	RP/40.7268.000	RP/40.7268.023	RP/40.7268.033
	0.5 gpm max.	Lime	RP/40.7259.000	RP/40.7259.023	RP/40.7259.033
	1.0 gpm max.	Blue	RP/40.7258.000	RP/40.7258.023	RP/40.7258.033
5.0 l/min		Red	RP/40.7251.000	RP/40.7251.023	RP/40.7251.033

## Female M22 Neoperl® chrome housing dimensions for standard (STD) insert

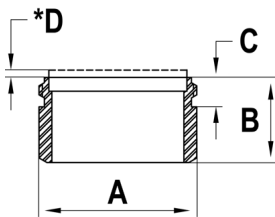


Housing Dimensions		
No	mm	Tolerance
A	23.5	± 0.05
B	17.00	± 0.10
*C	3.90	± 0.40

\* Washer stick-in



## Male M24 Neoperl® chrome housing dimensions for standard (STD) insert

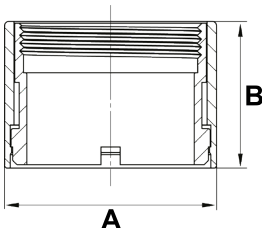


Housing Dimensions		
No	mm	Tolerance
A	23.90	± 0.10
B	13.00	± 0.10
C	4.50	± 0.10
*D	1.25	± 0.25



## Female M22 Neoperl® tamper proof chrome housing dimensions for standard (STD) insert

Tamper proof housings require a special key (RP/BX.011C.1) for fitting and removal



Housing Dimensions – Regular Vandal Proof		
No	mm	Tolerance
A	25.50	+ 0.25 / - 0.25
B	17.60	+ 0.25 / - 0.25

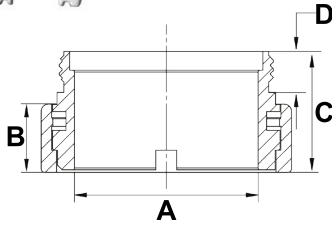


Female M22 tamper proof housings. Part no.: 40.xxxx.513 (xxxx depending on insert)



## Male M24 Neoperl® tamper proof chrome housing dimensions for standard (STD) insert

Tamper proof housings require a special key (RP/BX.011C.1) for fitting and removal



Housing Dimensions – Regular Vandal Proof		
No	mm	Tolerance
A	20.14	+ 0.51 / - 0.51
B	7.49	+ 0.51 / - 0.51
C	13.28	+ 0.51 / - 0.51
D	4.50	+ 0.25 / - 0.25

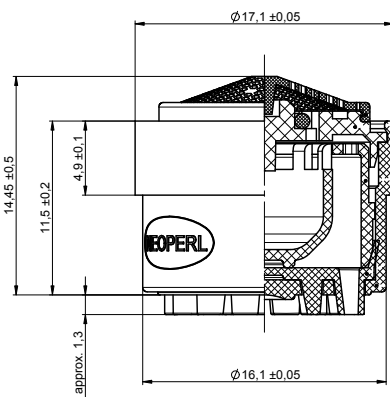


Male M24 tamper proof housings. Part no.: 40.xxxx.523 (xxxx depending on insert)

## Tiny Junior (TJ) Size PCA® Model – Pressure Compensating

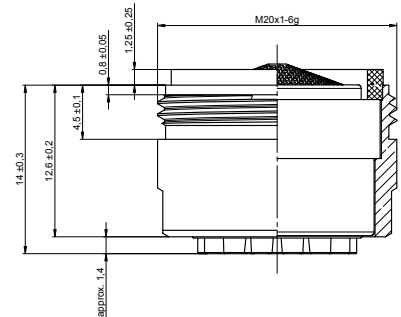
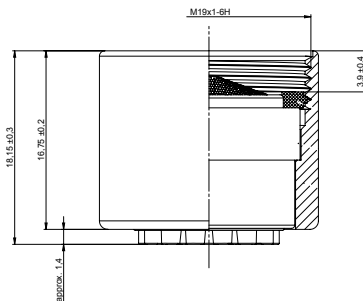
The pressure compensating flow regulator produces – by means of the o-ring – an almost constant flow rate regardless of pressure fluctuations

TJ Spray-SLC for water pressure 1 bar – 6 bar



Tiny Junior (TJ) Size PCA® Models		Order Codes		
Flow Rate US gallons/min	Colour Code	Tiny Junior (TJ) Insert only	c/w Female M19 Housing & Washer	c/w Male M20 Housing & Washer
0.35 gpm max.	Brown	RP/43.7268.000	RP/43.7268.023	RP/43.7268.033
0.5 gpm max.	Lime	RP/43.7259.000	RP/43.7259.023	RP/43.7259.033
1.0 gpm max.	Blue	RP/43.7258.000	RP/43.7258.023	RP/43.7258.033

## Female M19 and Male M20 Neoperl® chrome housing dimensions for Tiny Junior (TJ) insert



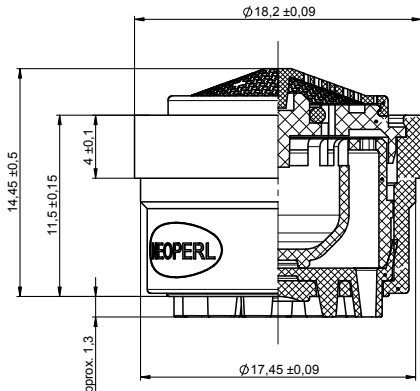
## Male M24 Neoperl® Compact tamper proof chrome housing for Tiny Junior (TJ) insert

Tamper proof housings require a special key (RP/BX.011C.1) for fitting and removal

# Junior (JR) Size PCA® Model – Pressure Compensating

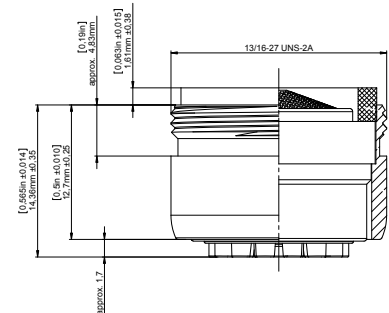
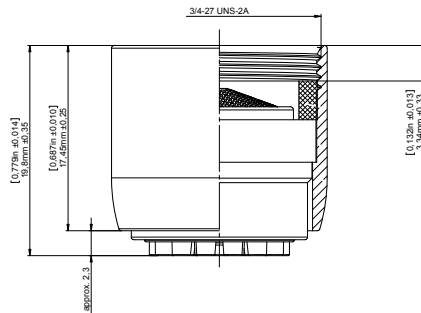
The pressure compensating flow regulator produces – by means of the o-ring – an almost constant flow rate regardless of pressure fluctuations

## JR Spray-SLC for water pressure 1 bar – 6 bar



Junior (JR) Size PCA® Models		Order Codes		
Flow Rate US gallons/min	Colour Code	Junior (JR) Insert only	Fem 3/4"-27 UNS-2B Housing & Washer	Male 13/16"-27 UNS-2A Housing & Washer
0.35 gpm max.	Brown	RP/42.7268.000	RP/42.7268.023	RP/42.7268.033
0.5 gpm max.	Lime	RP/42.7259.000	RP/42.7259.023	RP/42.7259.033
1.0 gpm max.	Blue	RP/42.7258.000	RP/42.7258.023	RP/42.7258.033

## Female 3/4" and Male 13/16" Neoperl® chrome housing dims for junior (JR) insert



## ROBERT PEARSON & COMPANY LTD

Post Office House, Post Office Lane  
Stockton, Warminster  
Wiltshire BA12 0SE

Telephone: (01985) 850954  
Facsimile: (01985) 850112

E-Mail: [sales@robertpearson.co.uk](mailto:sales@robertpearson.co.uk)  
Website: [www.robertpearson.co.uk](http://www.robertpearson.co.uk)