

Water Saving “No-Touch” Sensor Taps

Use up to 70% less water than conventional taps. Can help achieve BREEAM Points

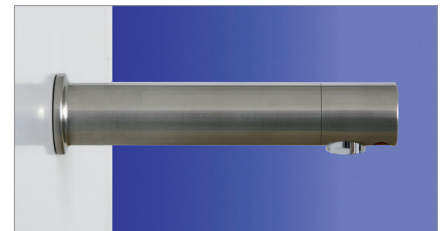
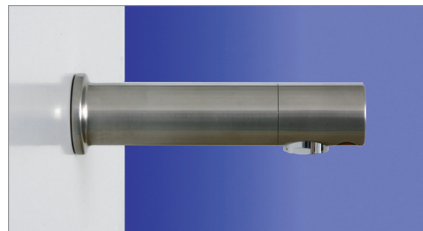
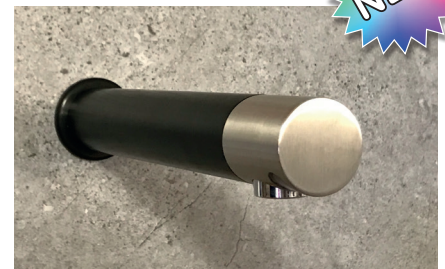
Hygienic “Touch-Free” Sensor Operation • Mains or Battery Powered Kits Available
Water & Energy Conservation • Ideal for Disabled Facilities • Infection Control

To operate simply put your hands in front of the sensor. Remove your hands and the tap will automatically turn itself off again after a few seconds. Optional Automatic “Purge” Facility available for taps not used for long periods.

Panel Mounted Brushed Stainless Steel Sensor Tap Kits



“Special-build” two tone c/w PVD charcoal black body (200mm spout projection)



Panel Mounted Sensor Tap Kit
(150mm spout projection)

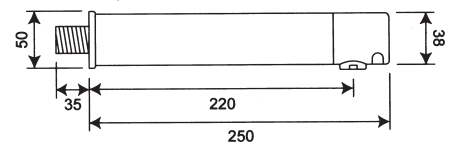
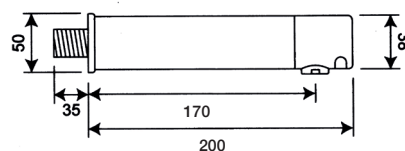
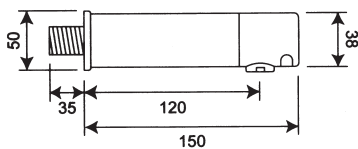
Mains Powered: **SSTW-M/150mm**
Battery Powered: **SSTW-B/150mm**

Panel Mounted Sensor Tap
(200mm spout projection)

Mains Powered: **SSTW-M/200mm**
Battery Powered: **SSTW-B/200mm**

Panel Mounted Sensor Tap
(250mm spout projection)

Mains Powered: **SSTW-M/250mm**
Battery Powered: **SSTW-B/250mm**



Fitting: Sensor is at spout end. Tap should be fitted on wall minimum 300mm above bottom of basin (450mm minimum if basin is metallic). **NB:** Please make sure there are no lights shining (or being reflected) directly into the sensor as this can make the tap false trigger.

TECHNICAL DATA (all spout projections)

Standard Finish	Brushed Stainless Steel
Optional Finish	Polished Steel
Standard flow rate	5 Lpm
Optional flow rates (please specify)	1.9, 3.8, 6 or 8 Lpm

Optional unrestricted laminar insert for low pressure water applications on request

Basin/Deck Mounted Sensor Tap Kits

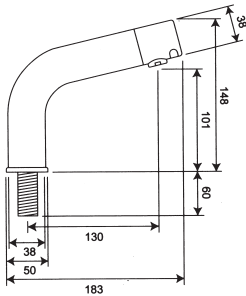
Basin/Deck Mounted Brushed Stainless Steel Sensor Tap Kits



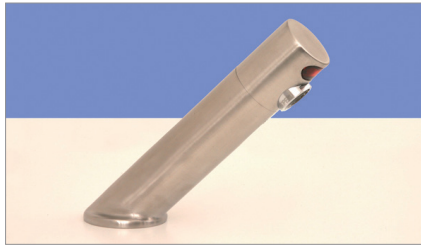
Shortneck

Mains Powered: **SSSN-M**

Battery Powered: **SSSN-B**



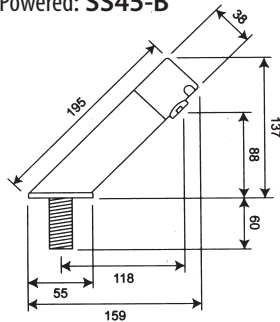
Fixing 3/4" BSP (28mm Ø clearance drill hole)



45° Spout Projection

Mains Powered: **SS45-M**

Battery Powered: **SS45-B**



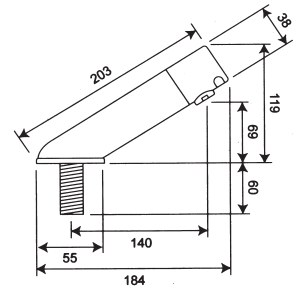
Fixing 3/4" BSP (28mm Ø clearance drill hole)



32° Spout Projection

Mains Powered: **SS32-M**

Battery Powered: **SS32-B**



Fixing 3/4" BSP (28mm Ø clearance drill hole)

TECHNICAL DATA (all spout projections)

Standard Finish **Brushed Steel**

Optional Finish **Polished Steel**

Standard flow rate **5 Lpm**

Optional flow rates **1.9, 3.8, 6, 8 Lpm**

Optional unrestricted insert for low water pressure applications on request

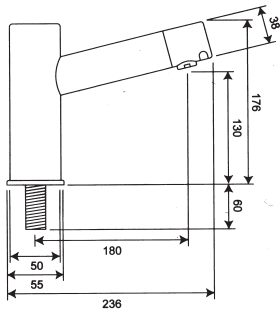
Basin/Deck Mounted Chrome Sensor Tap Kits



Shortneck

Mains Powered: **CPTSN-M**

Battery Powered: **CPTSN-B**



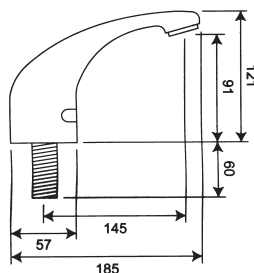
Fixing 3/4" BSP (28mm Ø clearance drill hole)



Sensor Tap

Mains Powered: **CMT-M**

Battery Powered: **CMT-B**



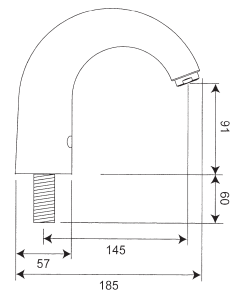
Fixing 3/4" BSP (28mm Ø clearance drill hole)



Swan Neck Sensor Tap

Mains Powered: **CSN-M**

Battery Powered: **CSN-B**



Fixing 3/4" BSP (28mm Ø clearance drill hole)

TECHNICAL DATA (all spout projections)

Finish **Chrome**

Standard flow rate **5 Lpm**

Optional flow rates **1.9, 3.8, 6, 8 Lpm**

Optional unrestricted insert for low water pressure applications on request

Highneck Deck Mounted Sensor Tap Kits

Brushed Stainless Steel Highneck Sensor Tap Kits



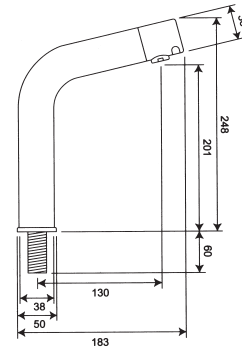
Brushed Stainless Steel Highneck (for vessel basins)

Mains Powered: SSHN-M
Battery Powered: SSHN-B

TECHNICAL DATA

Standard Finish **Brushed Steel**
Optional Finish **Polished Steel**
Standard flow rate **5 Lpm**
Optional flow rates **1.9, 3.8, 6, 8 Lpm**

Optional unrestricted insert for very low water applications on request



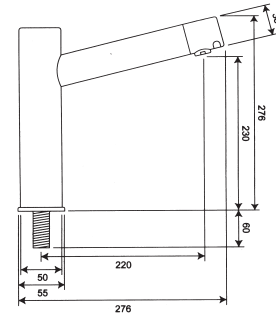
Fixing 3/4" BSP (28mm Ø clearance drill hole)

Chrome Highneck Sensor Tap Kits



Chrome Highneck Sensor Tap (for vessel basins)

Mains Powered: CPTHN-M
Battery Powered: CPTHN-B



Fixing 3/4" BSP (28mm Ø clearance drill hole)

TECHNICAL DATA

Finish **Chrome**
Standard flow rate **5 Lpm**
Optional flow rates **1.9, 3.8, 6, 8 Lpm**

Optional unrestricted insert for very low water applications on request

Hand Held Programmer



Optional Hand Held Programmer to allow you to alter:

- water run-on time per operation
- sensitivity
- optional automatic purge facility (to help reduce dead-legs)
- optional 2 minute valve open chlorination facility
- lock-out

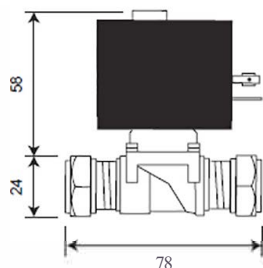


Please specify correct WRAS approved Solenoid Valves for your site conditions

Standard high pressure (HP) 0.75 Bar – 10 Bar

ORDER CODE

15mm 6v G202 Valve



TECHNICAL DATA

Material Brass
 O-ring/washers..... Nitrile
 Pressure rating 0.75 Bar – 10 Bar
 Orifice 12.7mm
 Connection 15mm compression
 Voltage 6vDC
 Operation type Latching

Optional low pressure (LP) 0 Bar – 1.5 Bar maximum

ORDER CODE

15mm 6v (4mm) Valve

TECHNICAL DATA

Material Brass
 O-ring/washers..... Nitrile
 Pressure rating 0 Bar – 1.5 Bar max.
 Orifice 4mm
 Connection 15mm compression
 Voltage 6vDC
 Operation type Latching

PRESSURE (Bar) FLOW RATE (Approx.)

0.1 Bar 2.20 l/min
 0.2 Bar 3.20 l/min
 0.3 Bar 3.90 l/min
 0.4 Bar 4.50 l/min
 0.5 Bar 5.00 l/min
 1.0 Bar 7.20 l/min

Optional very low pressure (VLP) 0 Bar – 0.45 Bar maximum

ORDER CODE

15mm 6v (6.7mm) Valve

TECHNICAL DATA

Material Brass
 O-ring/washers..... Nitrile
 Pressure rating 0 Bar – 0.5 Bar max.
 Orifice 6.7mm
 Connection 15mm compression
 Voltage 6vDC
 Operation type Latching

PRESSURE (Bar) FLOW RATE (Approx.)

0.1 Bar 4.30 l/min
 0.2 Bar 6.10 l/min
 0.3 Bar 7.50 l/min
 0.4 Bar 8.70 l/min

Water pressure: The standard solenoid valve is rated for water pressures of 0.75 Bar – 10 Bar, although we suggest a maximum pressure of 5 Bar. We also offer optional low pressure valves.

Electrical requirements: Each mains-powered kit requires a 3 amp protected fused spur. If specified at time of order we can arrange the kits so you can run up to 3 taps from a single 6v Power Supply Unit. You will need an additional 'Y' connector for our 2 tap kits, and 2 additional 'Y' Connectors and an extension 'D'-lead for our 3 tap kits.

Tap Tails: Taps come supplied with PEX lined WRAS approved flexi-hose pipes. Optional copper tails available on request.

NB: Please make sure there are no lights shining (or being reflected) directly into the sensor as this can make the tap false trigger.



ROBERT PEARSON & COMPANY LTD

Post Office House, Post Office Lane
 Stockton, Warminster
 Wiltshire BA12 0SE

Telephone: (01985) 850954
 Facsimile: (01985) 850112

E-Mail: sales@robertpearson.co.uk
 Website: www.robertpearson.co.uk