

Water Saving “No-Touch” Sensor Taps

Use up to 70% less water than conventional taps. Can help achieve BREEAM Points

Hygienic “Touch-Free” Sensor Operation • Mains or Battery Powered Kits Available
Water & Energy Conservation • Ideal for Disabled Facilities • Infection Control

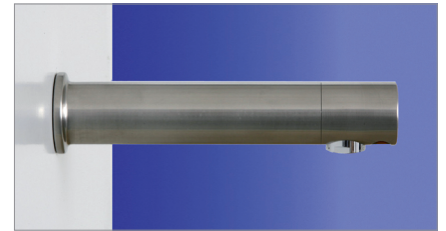
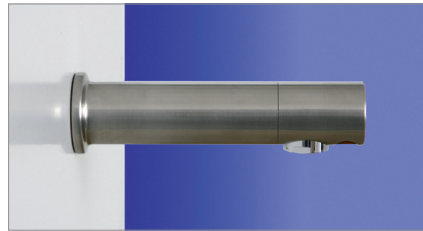
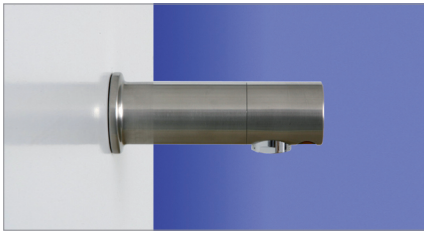
To operate simply put your hands in front of the sensor. Remove your hands and the tap will automatically turn itself off again after a few seconds. Optional Automatic “Purge” Facility available for taps not used for long periods.

Taps come supplied with PEX lined WRAS approved flexi-hose pipes. Optional copper tails available on request.

Panel Mounted Brushed Stainless Steel Sensor Tap Kits



“Special-build” two tone c/w PVD charcoal black body (200mm spout projection)



Panel Mounted Sensor Tap Kit
(150mm spout projection)

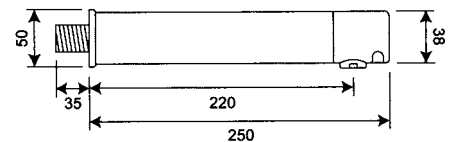
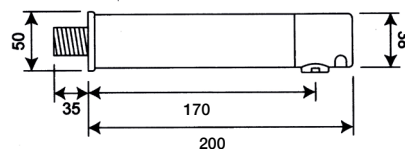
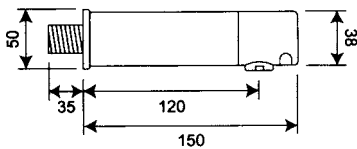
Mains Powered: **SSTW-M/150mm**
Battery Powered: **SSTW-B/150mm**

Panel Mounted Sensor Tap
(200mm spout projection)

Mains Powered: **SSTW-M/200mm**
Battery Powered: **SSTW-B/200mm**

Panel Mounted Sensor Tap
(250mm spout projection)

Mains Powered: **SSTW-M/250mm**
Battery Powered: **SSTW-B/250mm**



Fitting: Sensor is at spout end. Tap should be fitted on wall minimum 300mm above bottom of basin (450mm minimum if basin is metallic). **NB:** Please make sure there are no lights shining (or being reflected) directly into the sensor as this can make the tap false trigger.

TECHNICAL DATA (all spout projections)

Standard Finish **Brushed Stainless Steel**
Optional Finish **Polished Steel**
Standard flow rate **5 Lpm**
Optional flow rates (please specify) **1.9, 3.8, 6 or 8 Lpm**

Optional unrestricted laminar insert for low pressure water applications on request

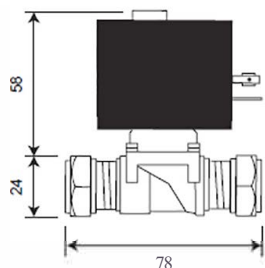


Please specify correct WRAS approved Solenoid Valves for your site conditions

Standard high pressure (HP) 0.75 Bar – 10 Bar

ORDER CODE

15mm 6v G202 Valve



TECHNICAL DATA

Material Brass
 O-ring/washers Nitrile
 Pressure rating 0.75 Bar – 10 Bar
 Orifice 12.7mm
 Connection 15mm compression
 Voltage 6vDC
 Operation type Latching

Optional low pressure (LP) 0 Bar – 1.5 Bar maximum

ORDER CODE

15mm 6v (4mm) Valve

TECHNICAL DATA

Material Brass
 O-ring/washers Nitrile
 Pressure rating 0 Bar – 1.5 Bar max.
 Orifice 4mm
 Connection 15mm compression
 Voltage 6vDC
 Operation type Latching

PRESSURE (Bar) FLOW RATE (Approx.)

0.1 Bar 2.20 l/min
 0.2 Bar 3.20 l/min
 0.3 Bar 3.90 l/min
 0.4 Bar 4.50 l/min
 0.5 Bar 5.00 l/min
 1.0 Bar 7.20 l/min

Optional very low pressure (VLP) 0 Bar – 0.45 Bar maximum

ORDER CODE

15mm 6v (6.7mm) Valve

TECHNICAL DATA

Material Brass
 O-ring/washers Nitrile
 Pressure rating 0 Bar – 0.5 Bar max.
 Orifice 6.7mm
 Connection 15mm compression
 Voltage 6vDC
 Operation type Latching

PRESSURE (Bar) FLOW RATE (Approx.)

0.1 Bar 4.30 l/min
 0.2 Bar 6.10 l/min
 0.3 Bar 7.50 l/min
 0.4 Bar 8.70 l/min

Water pressure: The standard solenoid valve is rated for water pressures of 0.75 Bar – 10 Bar, although we suggest a maximum pressure of 5 Bar. We also offer optional low pressure valves.

Electrical requirements: Each mains-powered kit requires a 3 amp protected fused spur. If specified at time of order we can arrange the kits so you can run up to 3 taps from a single 6v Power Supply Unit. You will need an additional 'Y' connector for our 2 tap kits, and 2 additional 'Y' Connectors and an extension 'D'-lead for our 3 tap kits.



Optional Hand Held Programmer to allow you to alter:

- water run-on time per operation
- sensitivity
- optional automatic purge facility (to help reduce dead-legs)
- optional 2 minute valve open chlorination facility
- lock-out



ROBERT PEARSON & COMPANY LTD

Post Office House, Post Office Lane
 Stockton, Warminster
 Wiltshire BA12 0SE

Telephone: (01985) 850954
 Facsimile: (01985) 850112

E-Mail: sales@robertpearson.co.uk
 Website: www.robertpearson.co.uk