

Robert Pearson & Company Ltd.

Water & Energy Saving Solutions

Product Guide 2023

www.robertpearson.co.uk

Tel: 01985 850954

Programmable Sensor Taps



Programmer



Programmable Sensors



Remote 'No-Touch' Sensors



Sensor WC Flushvalves



Sensor Urinal Flushvalves



PIR Urinal Controls



PIR Switches



Solenoid Valves



Actuated (Motorised) Valves



Neoperl Aerators & Flow Regs




Inline Water Flow Regulators



NEOPERL®
DISTRIBUTOR

Contents

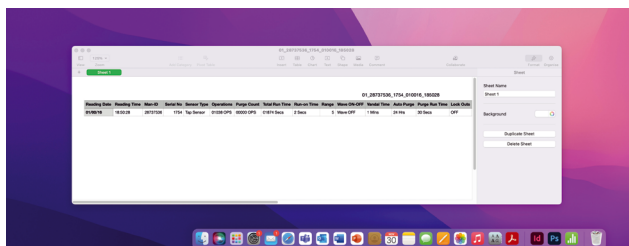
Programmer	Page 3
Programmable “No-Touch” Sensor Taps	Pages 4–5
Universal Programmable Sensors	Pages 6–7
“No Touch” Remote Sensor Kits (for your own tap spouts)	Page 8
“No Touch” Sensor Kits (for your shower heads and bath spouts)	Page 9
Anti-Ligature and Vandal-Resistant Tap Spouts and Showerheads	Page 10
Swipe Type “No Touch” Sensor WC Flushvalves	Page 11
Automatic Sensor Operated Urinal Flushvalves	Page 12
PIR Urinal Flush Controls	Page 13
Proximity Detection Water Shut Off Valves	Page 14
Actuated (Motorised) WRAS Valves	Page 15
Water Saving Tap Aerators and Flow Regulators 	Pages 16–17
Water Saving In Line Flow Regulators	Pages 18–19

Programmer

One programmer allows you to control all your Sensor Taps etc (individually)

www.robertpearson.co.uk/robertpearson/images/handheld-programmer.pdf

Our hand held programmer allows quick and easy adjustment on site, for all your Robert Pearson Sensor Taps and/or Robert Pearson Universal Programmable Sensors. It allows you to adjust sensitivity range, run-on timings, purge settings and more. Real-time data can be uploaded from the programmer via the USB port so you are able to see how many times each appliance has been operated (and purged), giving you accurate monitoring of water efficiency and appliance usage.



Data processing:

Download data directly to your laptop, desktop PC or Mac etc via USB interface.

If you do not wish to purchase a programmer we can programme your sensor taps and programmable universal sensors to your specification prior to despatch, however, if you need to make changes on site this can only be done by using a programmer.

Receive:

One button to read current settings of your Sensor Tap or Programmable Sensor.



Transmit:

One button to transmit your chosen settings to your Sensor Tap or Programmable Sensor.

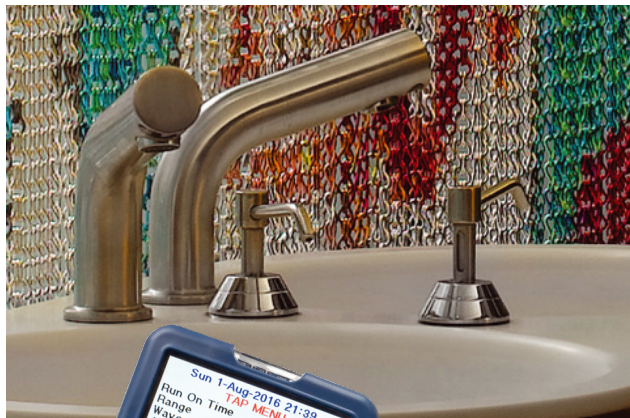


Programmable “No Touch” Sensor Taps

Can be programmed to purge taps after periods of inactivity (from 3hrs – 48hrs)

www.robertpearson.co.uk/products/sensor-taps/

- Use up to 70% less water than conventional taps. Can help achieve BREEAM points.
- Easy to operate – simply put your hands in front of the sensor.
- Reliable & Hygienic “No-touch” operation.
- Optional low pressure solenoid valves available on request.



Each kit c/w:

- 1 × pre-wired Sensor Tap
- 1 × 15mm Solenoid Valve
- 1 × pre-wired 6v PSU or
- 1 × Pre-wired Battery Pack.

Optional Programmer

Allows you to set and adjust an automatic purge



- Allows you to change sensitivity range.
- Allows you to change water run-on time etc.
- Automatic purge can help reduce dead legs.
- Upload real-time data via the USB port.

Panel Mounted Brushed Stainless Steel Programmable Sensor Tap Kits

Panel Mounted Sensor Tap
(150mm spout projection)

Mains Powered: SSTW-M/150mm

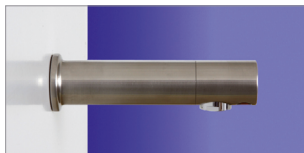
Battery Powered: SSTW-B/150mm



Panel Mounted Sensor Tap
(200mm spout projection)

Mains Powered: SSTW-M/200mm

Battery Powered: SSTW-B/200mm



Panel Mounted Sensor Tap
(250mm spout projection)

Mains Powered: SSTW-M/250mm

Battery Powered: SSTW-B/250mm



Basin/Deck Mounted Programmable Sensor Tap Kits

Highneck Sensor Tap
Chrome finish (for vessel basins)
Mains Powered: **CPTHN-M**
Battery Powered: **CPTHN-B**



Highneck Sensor Tap
Brushed steel (for vessel basins)
Mains Powered: **SSHN-M**
Battery Powered: **SSHN-B**



Shortneck Sensor Tap
Chrome finish
Mains Powered: **CPTSN-M**
Battery Powered: **CPTSN-B**



Shortneck Sensor Tap
Brushed steel finish
Mains Powered: **SSSN-M**
Battery Powered: **SSSN-B**



Sensor Tap
Chrome finish
Mains Powered: **CMT-M**
Battery Powered: **CMT-B**



45° Spout Projection Sensor Tap
Brushed steel finish
Mains Powered: **SS45-M**
Battery Powered: **SS45-B**



Sensor Tap
Chrome finish
Mains Powered: **CSN-M**
Battery Powered: **CSN-B**



32° Spout Projection Sensor Tap
Brushed steel finish
Mains Powered: **SS32-M**
Battery Powered: **SS32-B**



Universal Programmable Sensors

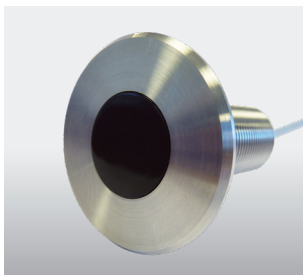
www.robertpearson.co.uk/products/programmable-sensors/

The Panel Mounted Programmable Sensor is available in brushed stainless steel. You will need to purchase a hand held programmer to adjust the settings yourself on site.

Universal sensor can be used to control your own tap spouts, urinals, showers, baths ... just specify the programmable sensor kit you want. Each kit comes with 1 x pre-wired Programmable Sensor, 1 x pre-wired Solenoid Valve and 1 x pre-wired 6vPSU or pre-wired battery pack.



Simply put your hand within the sensing range to activate the water



Automatically flushes individual urinal bowl when person moves away

Programmable "Auto" Sensor WC Flushvalves



Automatically flushes WC when person moves away



Universal sensor can be used to "Auto" control your own WC.

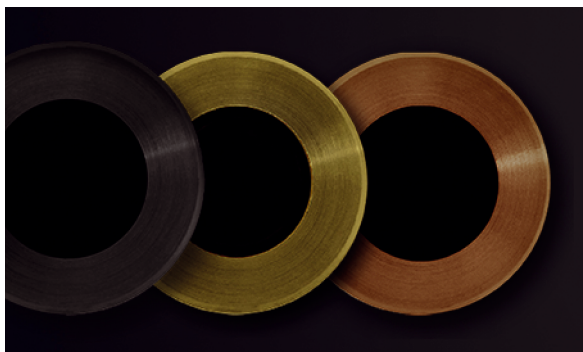
*Each kit comes with
1 x pre-wired Flushing Valve,
1 x Control Box and
1 x pre-wired Programmable Sensor.*

PVD Coloured Universal Programmable Sensors

www.robertpearson.co.uk/products/programmable-sensors/

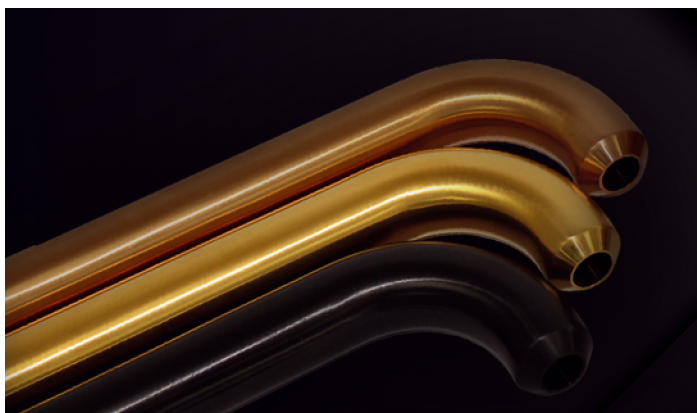
The Panel Mounted Programmable Sensor is available as standard in brushed stainless steel, and also now available in three PVD colourways.

Choose from Charcoal Black, Yellow Gold or Copper Gold



Universal sensor can be used to control your own tap spouts, urinals, showers, baths ... just specify the programmable sensor kit you want. Each kit comes with 1 x pre-wired Programmable Sensor, 1 x pre-wired Solenoid Valve and 1 x pre-wired 6vPSU or pre-wired battery pack.

Panel-mounted PVD Coloured Stainless Steel Tap Spouts



Brushed steel spout with 60° water outlet end



Brushed steel spout with 90° water outlet end

TECHNICAL DATA

Spout projection 200mm (approx.)
Standard flow reg. Unrestricted

“Twist-and-Lock” function: can be used in any application, but designed specifically for **healthcare environments** as the spout can quickly and easily be removed by the building manager for cleaning, ensuring minimal downtime.

"No-Touch" Remote Sensor Kits (for your tap spouts)

Anti-ligature sensor with 50mm detection range. Gives you total flexibility of design

<https://www.robertpearson.co.uk/products/tap-sensor-controls/>

- Simply put your hand within a few inches of the sensor to turn the water on.
- Available in mains-powered or battery-powered kits.
- Manually adjustable controls within the control box including optional **automatic purge facility** to flush taps that have not been used for long periods.



Ø38mm Matt Black Sensor



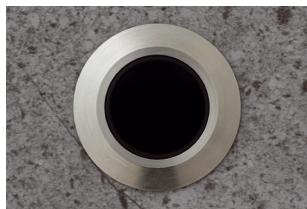
Ø38mm Chrome Tap Sensor



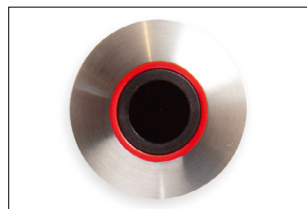
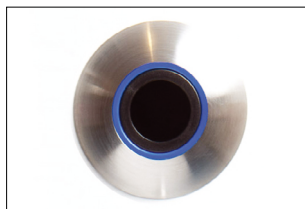
Ø38mm Brushed Steel Sensor



Flat Ø36mm Steel Sensor



Ø50mm Steel AV Sensors (for separate hot and cold supplies per basin)



Remote Touchpad Switch Kits (for your tap spouts)

Lightly press the touchpad switch to turn the water on

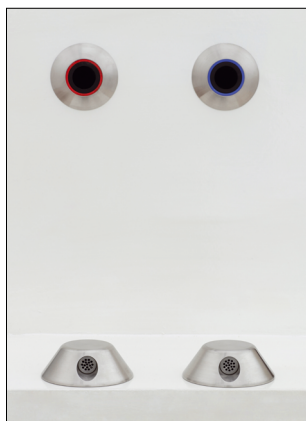


"No-Touch" Sensor Kits (for shower heads and bath spouts)

Waterproof brushed stainless steel bath/shower sensor

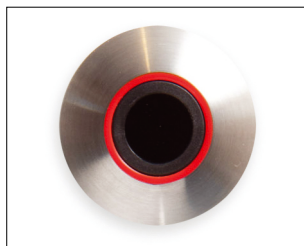
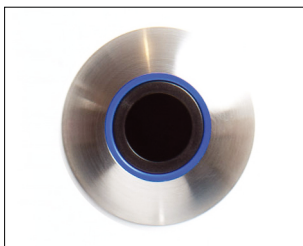
www.robertpearson.co.uk/products/shower-and-bath-sensor-controls/

- "No touch" hygienic sensor operation.
- Available in mains-powered or battery-powered kits.
- Simply put your hand within 50mm of the sensor to turn water on. Turns water off automatically.
- You can choose your own shower or bath spout or one of ours. Sensor is fitted remotely.



Remote AV Sensor Kits (for your bath spouts)

Ø50mm Steel AV Bath Sensors (for separate hot and cold supplies to spout)



Remote Touchpad Switch Kits (for your bath spouts)

Lightly press the touchpad switch to turn the water on



Anti-ligature Taps and Showerheads

Use our remote “no-touch” sensor kits to control the water flow automatically

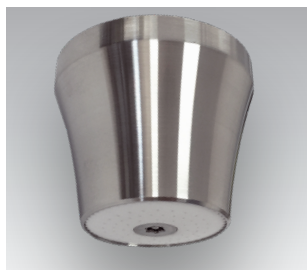
www.robertpearson.co.uk/products/anti-ligature-taps/

Basin/Deck Mounted Anti-Ligature Tap Spout



Order Code: ALN-DM(v2)

Ceiling Mounted Anti-ligature Shower Head



Order Code:
ALCMSH-PM(v2)

Vandal Resistant Taps and Showerheads

Use our remote “no-touch” sensor kits to control the water flow automatically

Panel Mounted Tap Spout



Order Code: VRTS-PM

Panel Mounted Spout



Order Codes:
VRBS-PM Bath Spout
VRBS(Tap)-PM Tap Spout

Panel Mounted Shower Head



Order Code: VRSH-PM

Swipe Type “No-Touch” Sensor WC Flushvalves

Simply put your hand within 50mm (2") of sensor to activate flush

www.robertpearson.co.uk/products/sensor-wc-flush/

- Up to 50% water savings
- Reduced maintenance—no handles or mechanical linkages to break
- Available in mains-powered or battery-powered kits.
- Can be retro-fitted into existing cisterns.

Ø38mm Chrome Sensor



Ø38mm Brushed Steel Sensor



Ø50mm Chrome Sensor



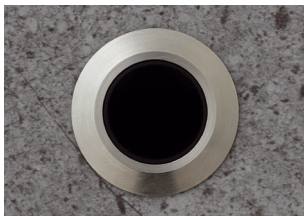
Ø50mm Brushed Steel Sensor



Ø38mm Matt Black Sensor



Flat Ø36mm Steel Sensor



Each kit comes with 1 x pre-wired Flushing Valve, 1 x Control Box and 1 x pre-wired Sensor.

Electronic Touchpad WC Flushvalves

Ø50mm Brushed Steel WC Touchpad (grey)



Each kit comes with 1 x pre-wired Flushing Valve, 1 x Control Box and 1 x pre-wired Touchpad.

Automatic Sensor Operated Urinal Flushvalves

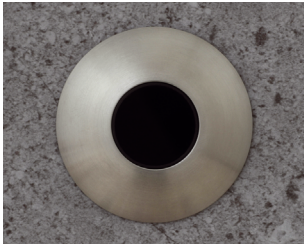
Up to 90% water savings. Can help achieve Wat 1 BREEAM Points

www.robertpearson.co.uk/products/tap-sensor-controls/

- Only the urinal bowl that has actually been used will get flushed.
- Optional combined pre-flush and purge facility. The pre-flush helps to prevent splashing by wetting the urinal bowl. The purge is initiated every 12 hours of non-use, helping reduce smells from the urinal during those periods of non-use.



Ø50mm Brushed Steel Sensor



Ø50mm Chrome Sensor



Ø50mm Matt Black Sensor



Flat Ø36mm Steel Sensor



PIR Urinal Flush Controls

Single PIR controls the water flow to a range of urinal bowls

www.robertpearson.co.uk/products/pir-urinal-controls/

Traditional Problem: Uncontrolled banks of urinals are continually wasting water by flushing all day and all night 365 days per year.

The Solution: The PIR sensor controls a water solenoid valve, normally fitted on the inlet pipe to a single cistern, that flushes a range of urinal bowls*. Flushing only occurs after the urinals have been used (and you can regulate the maximum number of times per hour the urinals will flush when the Gents are busy).

Automatic Hygiene Flush: Once every 12 hours when the urinals are not in use for long periods to help prevent traps drying out etc.

Ceiling Recessed (80mm dia)

Ceiling Surface Mounted

Ceiling Recessed (128mm dia)



Standard kit c/w:

*PIR Sensor, 15mm Solenoid Valve
and 6v Transformer (mains powered) or Battery
Pack (battery powered).*

***NB:** If you want the solenoid valve to control more than one cistern, or you are not using cisterns, please contact us to discuss special/ different solenoid valve options.

Proximity Detection Water Shut Off

The Problem: Leaking and damaged ball valves and taps etc. are not only an expensive waste of water, but also pose a risk of serious damage from flooding.

The Solution: Only when the PIR switch detects the room is occupied, will it automatically turn the water supply and lights etc. "ON" so the appliances work as normal. Up to 70% energy savings

PIR Occupancy Switches

www.robertpearson.co.uk/products/pir-switches/



Ceiling Recessed



Ceiling Surface Mounted



Wall Mounted

Normally Closed WRAS Solenoid Valves

www.robertpearson.co.uk/products/water-shut-off-valves/

Water saving. Can help achieve BREEAM Wat 4 credits. Available from ½"–2" sizes



Magnet Valve Opener



Allows you to temporarily energise the solenoid valve



Failsafe Closed Actuated (Motorised) WRAS Ballvalves (½"–2" sizes)

- Cost-comparative alternative to solenoid valves.
- Do not get hot.
- Works from 0 bar.
- Once in position only uses greatly reduced "holding" power.
- Can be plumbed in either way round.
- Operating time: 5 Sec approx. Helps to reduce water hammer.

Actuated (Motorised) WRAS Valves

An ideal choice when used for leak detection systems, sprinkler systems etc.

www.robertpearson.co.uk/products/actuated-ball-valves/

Do NOT get hot | Operate from 0 Bar

These actuated (motorised) WRAS valves can be configured in the following ways:

Power Open Power Close: Only takes power when valve is being opened or closed.

Failsafe Closed: Arrive in the closed position. The actuator powers the valve open and then on removing power, the internal capacitor will return the valve to the Failsafe Closed position.

Failsafe Open: Arrive in the open position. The actuator powers the valve closed and then on removing power, the internal capacitor will return the valve to the Failsafe Open position.

Actuated (Motorised) WRAS Ballvalves

RP/ABVM "Compact" model
0 Bar – 10 Bar | ½"–1" sizes



RP/ABVM model
0 Bar – 10 Bar | 1¼"–2" sizes



c/w manual override as standard

RP-CN-X20-2BW model
0 Bar – 40 Bar | ½"–2" sizes



c/w manual override as standard

Actuated (Motorised) WRAS Butterfly Valves

Lugged model*

0 Bar – 16 Bar | 2"–6" sizes

0 Bar – 10 Bar | 8"–16" sizes



Wafer model*

0 Bar – 16 Bar | 2"–6" sizes

0 Bar – 10 Bar | 8"–16" sizes



*if the butterfly valve is installed at the end of the pipe the max working pressure is reduced to 94psi (2" – 14")

Water Saving Tap Aerators and Flow Regulators

No plumbing required to fit. Simply replace existing tap aerator or flow straightener

www.robertpearson.co.uk/neoperl/

... a snap shot of our most popular tap inserts.

These products and flow rate options for our M22/M24 (STD) size inserts.

RP/CAAFR Cascade model combined aerator and flow regulator



Order Code: **RP/CAAFR**

Available Flow Rates/Colour Coding

1.9 Lpm	Lime Green	6 Lpm	Black
3.8 Lpm	Blue	8 Lpm	White
5 Lpm	Orange		

RP/LAMINAR Perlator model combined laminar and flow regulator (does not aerate the water)



Order Code: **RP/LAMINAR**

Available Flow Rates/Colour Coding

1.9 Lpm	Lime Green	6 Lpm	Black
3.8 Lpm	Blue	8 Lpm	White
5 Lpm	Orange		

RP/SPRAY model flow regulator with spray stream



Order Code: **RP/SPRAY**

Available Flow Rates/Colour Coding

1.3 Lpm	Brown	3 Lpm	Lilac
1.9 Lpm	Lime Green	3.8 Lpm	Blue
2 Lpm	Black	4 Lpm	Pink
2.5 Lpm	Green	5 Lpm	Red

RP/MIKADO model flow regulator with grid-like spray pattern



Order Code: **RP/MIKADO**

Available Flow Rates/Colour Coding

1.3 Lpm	Brown	3.8 Lpm	Blue
1.9 Lpm	Lime Green	4.5 Lpm	Pink

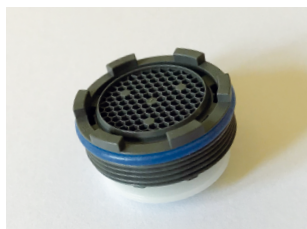


Water Saving Tap Aerators and Flow Regulators

No plumbing required to fit. Simply replace existing tap aerator or flow straightener

RP/CACHÉ Perlator model combined aerator and flow regulator

Screws into female tap thread—no housing required







Order Code: **RP/CACHÉ**

Available Flow Rates/Colour Coding

3.8 Lpm	Blue	7 Lpm	Green
5 Lpm	Orange	8 Lpm	White
6 Lpm	Black		

Caché Service Key

Order Codes:

	RP/CACHÉ/KEY/TT
	RP/CACHÉ/KEY/TJ
	RP/CACHÉ/KEY/JR
	RP/CACHÉ/KEY/STD

Approximate size guide for caché service keys:

Yellow (TT) = 16mm, Green (TJ) = 18mm

Red (JR) = 21mm, Grey (STD) = 24mm

RP/SSR Perlator model combined aerator and flow regulator with swivel feature



The angle of the water stream can be adjusted directly at the aerator by moving the adjustable tilting plate. Swivel angle (depending on the aerator model): $\pm 6^\circ$ up to $\pm 10^\circ$

Order Code: **RP/SSR**

Available Flow Rates/Colour Coding

3.8 Lpm	Blue	7 Lpm	Green
5 Lpm	Orange	8 Lpm	White
6 Lpm	Black		

RP/UNRESTRICTED model flow straightener (mainly for taps used in low pressure installations)



Order Code: **RP/UNRESTRICTED**



Water Saving Tap Tail Flow Regulators

No plumbing required. Water savings and improved distribution at peak times

RP/DWSA/TTFR model ½" Tap Tail Flow Regulator c/w chrome housing



Order Code: **RP/DWSA/TTFR**

Available Flow Rates/Colour Coding

1.4 Lpm	Brown	6 Lpm	Pink
1.9 Lpm	Yellow	8 Lpm	Red
2.5 Lpm	Orange	9 Lpm	Lilac
3.5 Lpm	Beige	10 Lpm	Black
5 Lpm	Violet	12 Lpm	White

www.robertpearson.co.uk/products/water-flow-regulators/

Water Saving Shower Flow Regulators

No plumbing required. Water savings and improved distribution at peak times

RP/SFR/DW model ½" Shower Flow Regulator c/w chrome housing



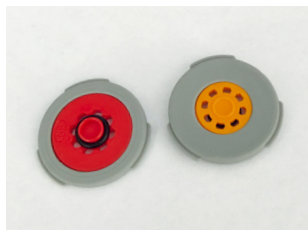
Order Code: **RP/SFR/DW**

Available Flow Rates/Colour Coding

4 Lpm	Grey	10 Lpm	Blue
6 Lpm	Black	12 Lpm	Red
8 Lpm	White	15 Lpm	Lime Green
9 Lpm	Orange		

www.robertpearson.co.uk/products/water-flow-regulators/

RP/PCW-01 model ½" Washer Regulator for shower hose

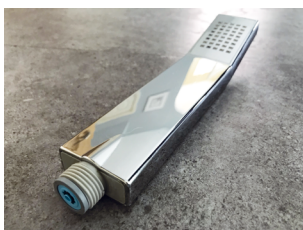
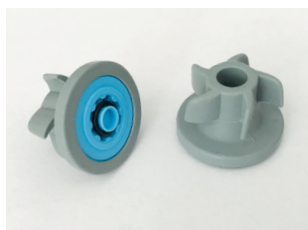


Order Code: **RP/PCW-01**

Available Flow Rates/Colour Coding

4 Lpm	Dark Grey	10 Lpm	Light Blue
6 Lpm	Black	12 Lpm	Red
8 Lpm	White	15 Lpm	Lime Green
9 Lpm	Orange		

RP/PCW-02 model ½" Washer Regulator for male thread shower handles (and bib/pillar tap tails)



Order Code: **RP/PCW-02**

Available Flow Rates/Colour Coding

2 Lpm	Olive	9 Lpm	Orange
4 Lpm	Dark Grey	10 Lpm	Light Blue
6 Lpm	Black	12 Lpm	Red
8 Lpm	White		



Water Saving Inline Flow Regulators

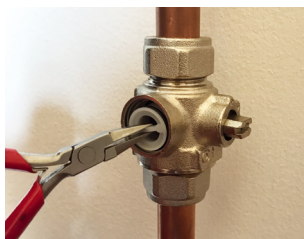
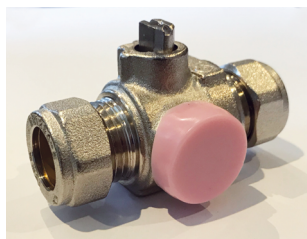
Can help achieve BREEAM points. Help meet Code for Sustainable Homes etc.

www.robertpearson.co.uk/products/water-flow-regulators/

- Up to 70% water savings at taps and showers etc. by ensuring maximum and constant flow rates, irrespective of changes in water pressure between **1 & 10 bar** unless stated otherwise. Reduced hot water consumption also provides energy savings
- Improves water distribution around the site especially at peak demand periods

RP/ACC model combined flow regulating & isolating ACCESS valve

(for outlets supplied with water pressure 0.5 Bar – 6 Bar maximum)



Available Flow Rates (litres per minute) for both 15mm RP/ACC and 22mm RP/ACC

2.5 Lpm	Lime Green	10 Lpm	Yellow
4 Lpm	Pink	12 Lpm	Brown
6 Lpm	Grey	15 Lpm	Blue
8 Lpm	White	18 Lpm	Green

Optional strainer available on request.

Optional Red and/or Blue Handles for the valves available on request.

Order Codes: **15mm RP/ACC** or **22mm RP/ACC**

RP/ISO(v2) model combined flow regulating & isolating valve



Available Flow Rates (litres per minute) for 15mm RP/ISO(v2)

4 Lpm	Grey
6 Lpm	Black
8 Lpm	White

Optional Red and/or Blue Handles for the valves available on request.

Order Code: **15mm RP/ISO**

RP/GA model flow regulating insert

(for your own choice of compression ended 15mm valve)



Available Flow Rates (litres per minute) for 15mm RP/GA

2 Lpm	Olive	10 Lpm	Yellow
3 Lpm	Lilac	12 Lpm	Brown
4 Lpm	Pink	15 Lpm	Blue
6 Lpm	Grey	18 Lpm	Green
8 Lpm	White		

Order Code: **15mm RP/GA**

Recent Projects include:

Restaurants / Bars / Clubs

Nandos
Alchemist Bars
Sucre
Sunday in Brooklyn
Jeru
Five Guys
Burger King
Beds & Bars

Offices

Magdalen Centre (Oxford)
BT HQ (Belfast)
Bristol Beacon
Oxford House (London)
Citypoint (London)
Bloomberg HQ (London)
Northern Trust (Canary Wharf)
J.P. Morgan (Glasgow)
Goldman Sachs (HQ) (London)
Verde Building (London)
Barclays Bank HQ (Canary Wharf)
Soho House (London)
Google (London)
Mitsubishi Tower (London)
The Coach Works (Leeds)
BOHO X (Middlesbrough)
Accenture (London)
Buchanan Wharf (Glasgow)
Damac Tower, London
Shell Tower (London)
Gotham City (London)
The Met Building (London)

Factories / Industrial

MTCE (Thetford)
El-Sallab Steel Factory (Egypt)
Coca Cola (Sidcup)
ABP Food Group (UK & Ireland)
LSH Mercedes (Birmingham)

Arts / Entertainment

Glasgow Science Centre
The Light Cinema (Sittingbourne)
Burrell Collection (Glasgow)
Sondheim Theatre (London)
Theatre Royal Stratford East

Sports Centres

Alexander Stadium (Birmingham)
Manchester Aquatic Centre
Twickenham Stadium
All England Lawn Tennis Club

Hotels

Everest Hotel (Kathmandu)
Minorities Hotel (London)
Strand Palace Hotel (London)
The Lensbury (Teddington)
Hampton by Hilton (Belfast)

Education

Heriot Watt University (Edinburgh)
The STEAMhouse, BCU (B'ham)
Westminster Academy (London)
Phoenix Upper School (London)
iAero Centre (Yeovil)

Hospitals / Healthcare

Clatterbridge Hospital (Birkenhead)
Darlington Memorial Hospital
Tees, Esk & Wear Valley NHS Trust
Castle Peak Hospital (Hong Kong)
Elysium Healthcare
Baxendale Care Home (London)
Wirral Hospital
Springfield Hospital (Chelmsford)
Bunbury House (Ellesmere Port)
Options for Care (Birmingham)

Government

Royal Parks (London)
Peterborough Town Hall
HMPs - Wellingborough, Kirkham,
Cornton Vale, Wealstun,
Wellingborough, Glen Parva
London Borough of Camden
Halton Training Camp
Ayrshire Council
Newlands Park Police Station

Retail

Waitrose
Lidl
Amazon
Next

Transport

Crossrail
Network Rail
MOTO Motorway Services



Not applicable to all products. For full details of WRAS and ECA approved products please contact us



ROBERT PEARSON & COMPANY LTD

Post Office House, Post Office Lane
Stockton, Warminster
Wiltshire BA12 0SE

Telephone: (01985) 850954
E-Mail: sales@robertpearson.co.uk
Website: www.robertpearson.co.uk