

# Direct Acting Normally Closed Solenoid Valves

## Direct Acting (LP) 230v Normally Closed WRAS Solenoid Valves [ $\frac{1}{2}$ " – $\frac{3}{4}$ " sizes]

- Strainers are recommended to protect the valves from debris
- Optional 12vDC or 24v  available on request
- Optional magnetic valve opener. Allows you to open valve without power
- Voltage  $\pm 10\%$ . Continuous Duty 100 %
- **EPDM Seals as standard** | NBR or FPM seals available on request

### $\frac{1}{2}$ " – $\frac{3}{4}$ " Direct Acting LP NC Valves

Media: **liquid and gaseous fluids\***

Media temperature: **85°C max**

Max viscosity: **5°E**

(~37 cStokes or mm<sup>2</sup>/s)

\* verify the compatibility of fluid with material in contact

### Materials in contact with fluid

Body: **Brass**

Sealing: **EPDM**

$\frac{1}{2}$ " size Internal components: **Brass and PPS**

$\frac{3}{4}$ " size Internal components: **Brass and stainless steel**

Seat: **Brass**

Core tube: **Stainless steel**

Shading ring: **Copper**

### Suitable for water pressure:

0 Bar – 8 Bar (AC Coils)

0 Bar – 3 Bar (DC Coils)

### Order Codes (LP):

$\frac{1}{2}$ " 230v LP NC Solenoid Valve

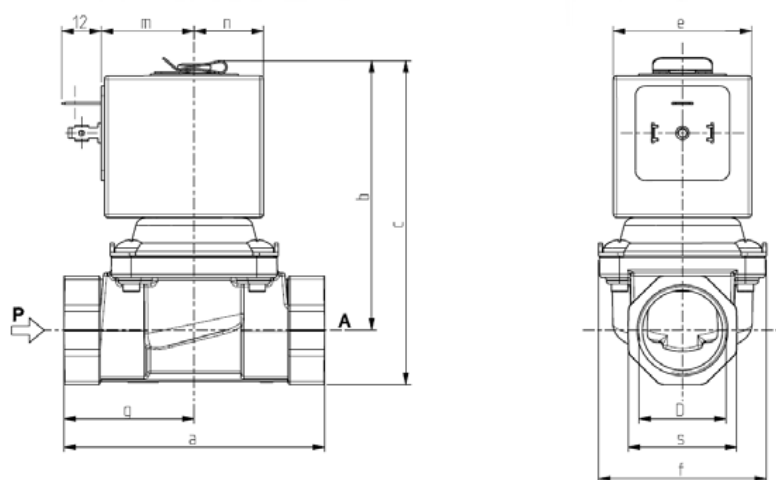
$\frac{3}{4}$ " 230v LP NC Solenoid Valve

### Power Absorption:

	Inrush	Holding	DC
$\frac{1}{2}$ "	23 va	14 va	9W
$\frac{3}{4}$ "	44 va	24 va	13W

Opening time (ms) ~100 to ~150

Closing time (ms) ~100 to ~400

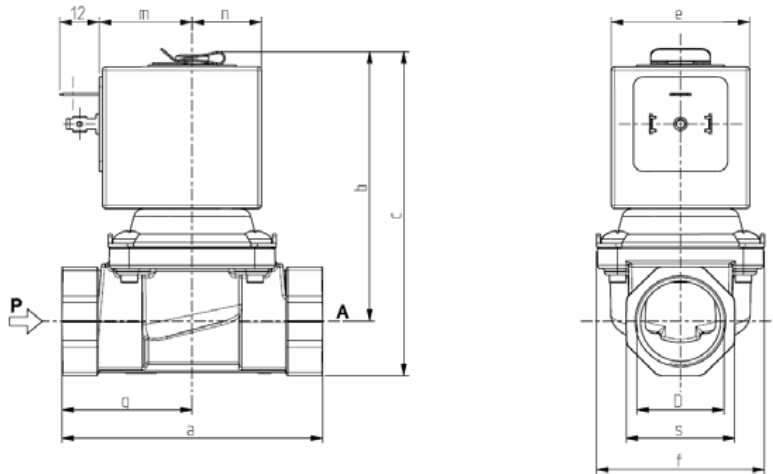


D	a	b	c	e	f	m	n	s	g
G 1/2	66	67,5	78,7	30	40,2	21,6	15*	27	-
G 3/4	79	81	98	42	51	28	21	33	-

# Direct Acting Normally Closed Solenoid Valves

## Direct Acting (LP) 230v Normally Closed Solenoid Valves [1" size]

- Strainers are recommended to protect the valves from debris
- Optional 12vDC or 24v  available on request
- Optional magnetic valve opener. Allows you to open valve without power
- Voltage  $\pm 10\%$ . Continuous Duty 100 %
- **NBR Seals as standard** | FPM or EPDM seals available on request



D	a	b	c	e	f	m	n	s	g
G 1	105	100	121	48,6	71	35	24,3	42	46

### 1" Direct Acting LP NC Valves

Media: **liquid and gaseous fluids\***

Media temperature: **85°C max**

Max viscosity: **5°E**

(~37 cStokes or mm<sup>2</sup>/s)

\* verify the compatibility of fluid with material in contact

### Materials in contact with fluid

Body: **Brass**

Sealing: **NBR**

Internal components: **Brass and stainless steel**

Seat: **Brass**

Core tube: **Stainless steel**

Shading ring: **Copper**

### Suitable for water pressure:

0 Bar – 8 Bar (AC Coils)

0 Bar – 3 Bar (DC Coils)

### Order Code (LP):

**1" 230v LP NC Solenoid Valve**

### Power Absorption:

	Inrush	Holding	DC
1"	65 va	33 va	17W

Opening time (ms) ~100 to ~150

Closing time (ms) ~100 to ~400



## ROBERT PEARSON & COMPANY LTD

Post Office House, Post Office Lane  
Stockton, Warminster  
Wiltshire BA12 0SE

Telephone: (01985) 850954

Facsimile: (01985) 850112

E-Mail: [sales@robertpearson.co.uk](mailto:sales@robertpearson.co.uk)

Website: [www.robertpearson.co.uk](http://www.robertpearson.co.uk)