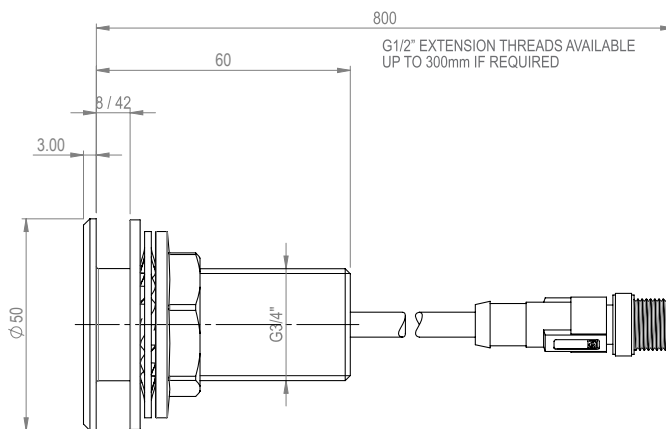
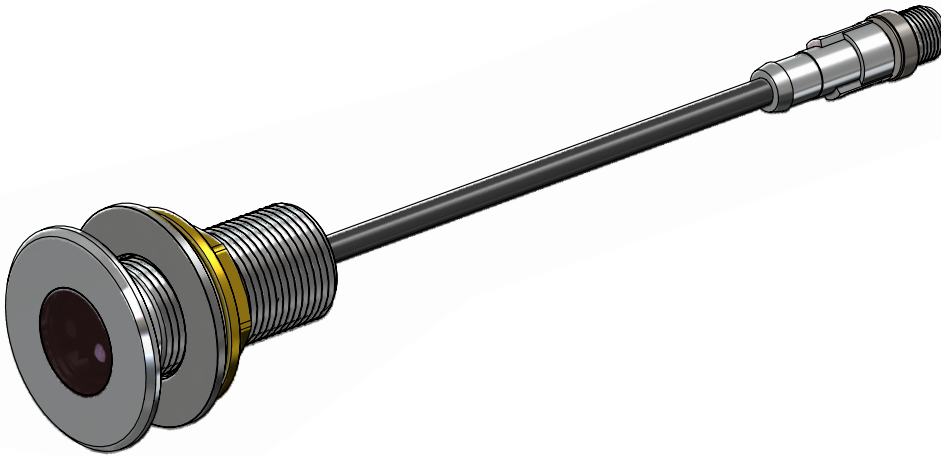


PROGRAMMABLE PANEL MOUNTED SENSOR

*Universal sensor can be used to control your own tap spouts, urinals, showers, WCs
... just specify the kit you want from the options below*

The Panel Mounted Programmable Sensor is available, as standard, in brushed stainless steel. You will need to purchase a hand held programmer to adjust the settings yourself on site.

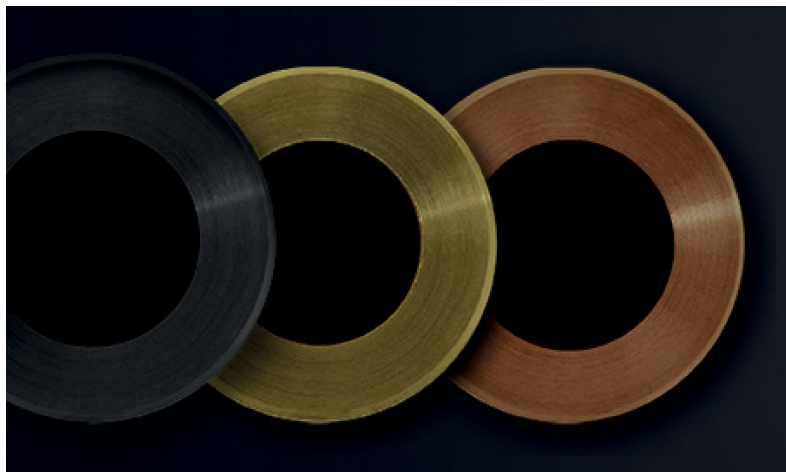


Hand Held Programmer

PVD COLOURED PROGRAMMABLE SENSOR

Choose from Charcoal Black, Yellow Gold or Copper Gold

The Panel Mounted Programmable Sensor is also now available in three PVD colourways.



Programmable Panel Mounted Tap Sensor (to control your own tap spout)

Adjustable settings include; run-on time, sensor range, wave-on/wave-off operation, automatic purge to help prevent water dead legs, anti-vandal features and more including a "lock-out" setting to help prevent excessive operations in a specified period. For more detailed technical data please visit www.robertpearson.co.uk.

Simply put your hand within the sensing range to activate the water. As long as the sensor detects your hand water will continue to run. Take your hand away and the water will stop after the pre-set but adjustable overrun time.

Programmable Tap Sensor Kit Order Codes:

PsensT-B

Battery powered tap sensor kit

Kit c/w

1 x Programmable Sensor
1 x Pre-wired 15mm Solenoid Valve
1 x Pre-wired Battery Pack

PsensT-M

Mains powered tap sensor kit

Kit c/w

1 x Programmable Sensor
1 x Pre-wired 15mm Solenoid Valve
1 x Pre-wired 6V PSU

Programmable Panel Mounted Individual Urinal Sensor

Adjustable settings include; pre-flush wait, pre-flush time and main flush time, sensor range and automatic purge to help prevent water dead legs. For more detailed technical data please visit www.robertpearson.co.uk.

Programmable Individual Urinal Sensor Kit Order Codes:

PsensU-B

Battery powered urinal sensor kit

Kit c/w

1 x Programmable Sensor
1 x Pre-wired 15mm Solenoid Valve
1 x Pre-wired Battery Pack

PsensU-M

Mains powered urinal sensor kit

Kit c/w

1 x Programmable Sensor
1 x Pre-wired 15mm Solenoid Valve
1 x Pre-wired 6V PSU

Programmable Panel Mounted Shower Sensor (to control your own shower)

Adjustable settings include; run-on time, sensor range, wave-on/wave-off, automatic purge, anti-vandal, lock-out and more. For more detailed technical data please visit www.robertpearson.co.uk.

Programmable Shower Sensor Kit Order Codes:

PsensS-B

Battery powered shower sensor kit

Kit c/w

1 x Programmable Sensor
1 x Pre-wired 15mm Solenoid Valve
1 x Pre-wired Battery Pack

PsensS-M

Mains powered shower sensor kit

Kit c/w

1 x Programmable Sensor
1 x Pre-wired 15mm Solenoid Valve
1 x Pre-wired 6V PSU

Programmable Panel Mounted Bath Tap Sensor (to control your own bath spout)

Adjustable settings include; run-on time, sensor range, wave-on/wave-off, automatic purge, anti-vandal, lock-out and more. For more detailed technical data please visit www.robertpearson.co.uk.

Programmable Bath Tap Sensor Kit Order Codes:

PsensB-B

Battery powered bath tap sensor kit

Kit c/w

1 x Programmable Sensor
1 x Pre-wired 15mm Solenoid Valve
1 x Pre-wired Battery Pack

PsensB-M

Mains powered bath tap sensor kit

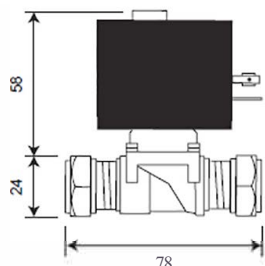
Kit c/w

1 x Programmable Sensor
1 x Pre-wired 15mm Solenoid Valve
1 x Pre-wired 6V PSU

Please specify correct WRAS approved Solenoid Valves for your site conditions

Standard high pressure (HP) 0.75 Bar – 10 Bar

ORDER CODE
15mm 6v G202 Valve



TECHNICAL DATA

Material Brass
O-ring/washers Nitrile
Pressure rating 0.75 Bar – 10 Bar
Orifice 12.7mm
Connection 15mm compression
Voltage 6vDC
Operation type Latching

Optional low pressure (LP) 0 Bar – 1.5 Bar maximum

ORDER CODE
15mm 6v (4mm) Valve

TECHNICAL DATA

Material Brass
O-ring/washers Nitrile
Pressure rating 0 Bar – 1.5 Bar max.
Orifice 4mm
Connection 15mm compression
Voltage 6vDC
Operation type Latching

PRESSURE (Bar) FLOW RATE (Approx.)

0.1 Bar	2.20 l/min
0.2 Bar	3.20 l/min
0.3 Bar	3.90 l/min
0.4 Bar	4.50 l/min
0.5 Bar	5.00 l/min
1.0 Bar	7.20 l/min

Optional very low pressure (VLP) 0 Bar – 0.45 Bar maximum

ORDER CODE
15mm 6v (6.7mm) Valve

TECHNICAL DATA

Material Brass
O-ring/washers Nitrile
Pressure rating 0 Bar – 0.5 Bar max.
Orifice 6.7mm
Connection 15mm compression
Voltage 6vDC
Operation type Latching

PRESSURE (Bar) FLOW RATE (Approx.)

0.1 Bar	4.30 l/min
0.2 Bar	6.10 l/min
0.3 Bar	7.50 l/min
0.4 Bar	8.70 l/min

Water pressure: The standard solenoid valve is rated for water pressures of 0.75 Bar – 10 Bar, although we suggest a maximum pressure of 5 Bar. We also offer optional low pressure valves.

Electrical requirements: Each mains-powered kit requires a 3 amp protected fused spur. If specified at time of order we can arrange the kits so you can run up to 3 taps from a single 6v Power Supply Unit. You will need an additional 'Y' connector for our 2 tap kits, and 2 additional 'Y' Connectors and an extension 'D'-lead for our 3 tap kits.

Please note: Do NOT mount these A.I.R. (active infrared) programmable sensors on opposite walls, "looking" into each other, across an empty void as this can cause the sensor to malfunction. Make sure there are no lights shining (or being reflected) directly into the sensor as this can make the sensor false trigger.

PROGRAMMABLE "AUTO" WC SENSOR

Fit sensor directly behind where a person sits on the WC. When that person finishes and walks away the WC will automatically flush.

Auto Flush Valve

Adjustable settings include; sensor range, detect times, flush times and walk away times, automatic purge, lock-out and more. For more detailed technical data please visit www.robertpearson.co.uk.

Order Codes:

PsensWC-AUTO-B
Battery powered

Kit c/w

1 x Programmable Sensor
1 x Pre-wired WC Flushvalve
1 x Control Box and Battery Pack

PsensWC-AUTO-M
Mains powered

Kit c/w

1 x Programmable Sensor
1 x Pre-wired WC Flushvalve
1 x Control Box and 6v PSU



Pre-wired WC Flushvalve (to fit into a cistern with flat bottomed internal base). 11/2" standard. Optional 2" if specified at time of order.



ROBERT PEARSON & COMPANY LTD

Post Office House, Post Office Lane
Stockton, Warminster
Wiltshire BA12 0SE

Telephone: (01985) 850954
Facsimile: (01985) 850112

E-Mail: sales@robertpearson.co.uk
Website: www.robertpearson.co.uk