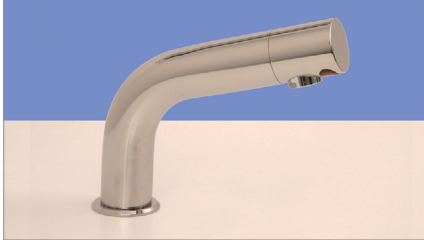


Water Saving Programmable Sensor Taps

Optional Automatic "Purge" Facility available for taps not used for long periods

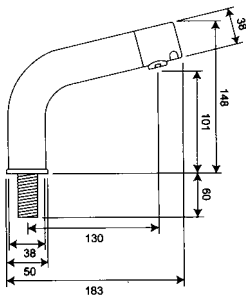
Use up to 70% less water than conventional taps. Can help achieve BREEAM points
Hygienic "touch-free" sensor operation • Mains or battery powered kits available

Basin/Deck Mounted Brushed Stainless Steel Sensor Tap Kits

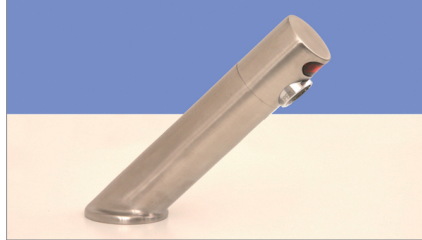


Shortneck

Mains Powered: **SSSN-M**
Battery Powered: **SSSN-B**

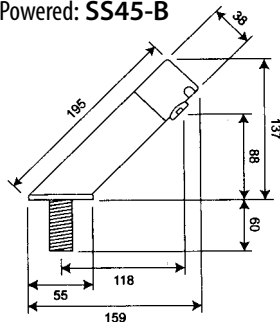


Fixing 3/4" BSP (28mm Ø clearance drill hole)

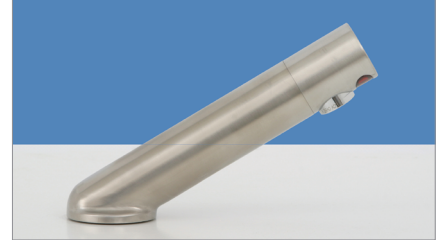


45° Spout Projection

Mains Powered: **SS45-M**
Battery Powered: **SS45-B**

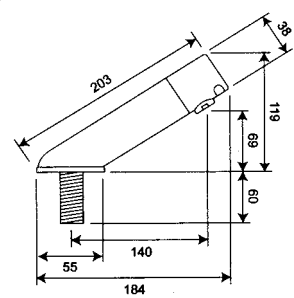


Fixing 3/4" BSP (28mm Ø clearance drill hole)



32° Spout Projection

Mains Powered: **SS32-M**
Battery Powered: **SS32-B**



Fixing 3/4" BSP (28mm Ø clearance drill hole)

TECHNICAL DATA

Standard Finish **Brushed Steel**
Optional Finish **Polished Steel**
Standard flow rate **5 Lpm**

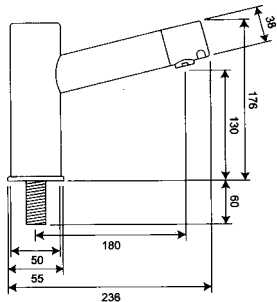
Optional flow rates **1.9, 3.8, 6, 8 Lpm**
Optional unrestricted insert for low water pressure applications on request

Basin/Deck Mounted Chrome Sensor Tap Kits

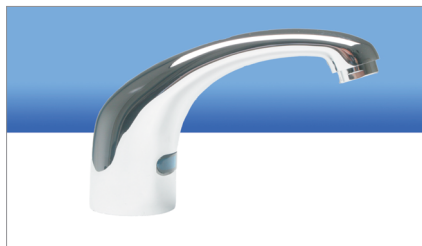


Shortneck

Mains Powered: **CPTSN-M**
Battery Powered: **CPTSN-B**

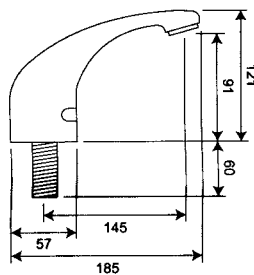


Fixing 3/4" BSP (28mm Ø clearance drill hole)



Sensor Tap

Mains Powered: **CMT-M**
Battery Powered: **CMT-B**

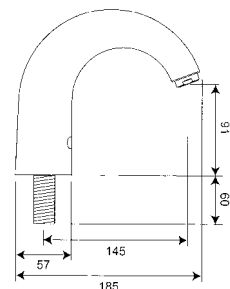


Fixing 3/4" BSP (28mm Ø clearance drill hole)



Swan Neck Sensor Tap

Mains Powered: **CSN-M**
Battery Powered: **CSN-B**



Fixing 3/4" BSP (28mm Ø clearance drill hole)

TECHNICAL DATA

Finish **Chrome**
Standard flow rate **5 Lpm**
Optional flow rates **1.9, 3.8, 6, 8 Lpm**

Optional unrestricted insert for low water pressure applications on request

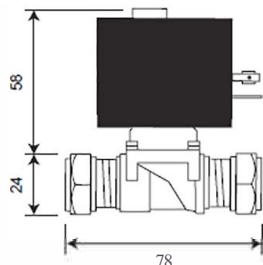
Please specify correct UK Water Reg 4 Solenoid Valves for your site conditions

Kiwa (KUKreg4)

Standard high pressure (HP)
0.75 Bar – 10 Bar

ORDER CODE

15mm 6v G202 Valve



TECHNICAL DATA

Material Brass
O-ring/washers Nitrile
Pressure rating 0.75 Bar – 10 Bar
Orifice 12.7mm
Connection 15mm compression
Voltage 6vDC
Operation type Latching

WRAS Approved

Optional low pressure (LP)
0 Bar – 1.5 Bar maximum

ORDER CODE

15mm 6v (4mm) Valve

TECHNICAL DATA

Material Brass
O-ring/washers Nitrile
Pressure rating 0 Bar – 1.5 Bar max.
Orifice 4mm
Connection 15mm compression
Voltage 6vDC
Operation type Latching

PRESSURE (Bar) FLOW RATE (Approx.)

0.1 Bar	2.20 l/min
0.2 Bar	3.20 l/min
0.3 Bar	3.90 l/min
0.4 Bar	4.50 l/min
0.5 Bar	5.00 l/min

WRAS Approved

Optional very low pressure (VLP)
0 Bar – 0.45 Bar maximum

ORDER CODE

15mm 6v (6.7mm) Valve

TECHNICAL DATA

Material Brass
O-ring/washers Nitrile
Pressure rating 0 Bar – 0.5 Bar max.
Orifice 6.7mm
Connection 15mm compression
Voltage 6vDC
Operation type Latching

PRESSURE (Bar) FLOW RATE (Approx.)

0.1 Bar	4.30 l/min
0.2 Bar	6.10 l/min
0.3 Bar	7.50 l/min
0.4 Bar	8.70 l/min

Water pressure: The standard solenoid valve is rated for water pressures of 0.75 Bar – 10 Bar, although we suggest a maximum pressure of 5 Bar. We also offer optional low pressure valves.

Electrical requirements: Each mains-powered kit requires a 3 amp protected fused spur. If specified at time of order we can arrange the kits so you can run up to 3 taps from a single 6v Power Supply Unit. You will need an additional 'Y' connector for our 2 tap kits, and 2 additional 'Y' Connectors and an extension 'D'-lead for our 3 tap kits.

To operate: Simply put your hands in front of the sensor. Remove your hands and the tap will automatically turn itself off again after a few seconds. Optional Automatic "Purge" Facility available for taps not used for long periods.

Tap Tails: Taps come supplied with PEX lined WRAS approved flexi-hose pipes. Optional copper tails available on request on most models.

NB: False triggering may occur if there are lights shining (or being reflected) directly into the sensor.



Optional Hand Held Programmer to allow you to alter:

- water run-on time per operation
- sensitivity
- optional automatic purge facility (to help reduce dead-legs)
- optional 2 minute valve open chlorination facility
- lock-out
- download data such as how many times the tap has been activated (or purged) via USB



ROBERT PEARSON & COMPANY LTD

Post Office House, Post Office Lane
Stockton, Warminster
Wiltshire BA12 0SE

Telephone: (01985) 850954

Facsimile: (01985) 850112

E-Mail: sales@robertpearson.co.uk

Website: www.robertpearson.co.uk