

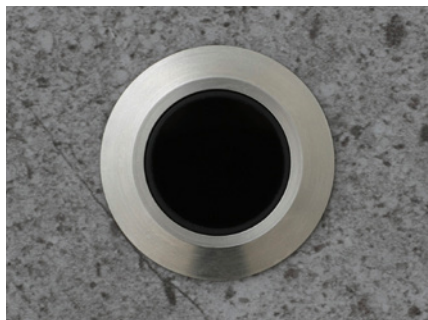
TAP SENSOR CONTROLS

"No touch" hygienic sensor operation

Simply put your hand within 50mm of the sensor to turn water on. Turns water off automatically after use

You can choose your own tap spout or one of ours. Sensor is fitted remotely.

TPTS model brushed stainless steel Flat 36mm Tap Sensor kits



Mains Powered (0.5 Bar - 6 Bar)

TPTS-M/HP/SS/F36/1 Tap Sensor kit

- 1 no. Mains-powered tap control box
- 1 no. 15mm Plastic 12V solenoid valve
- 1 no. Sensor c/w Flat 36mm steel bezel

TPTS-M/HP/SS/F36/2 Tap Sensor kit

- 1 no. Mains-powered tap control box
- 2 no. 15mm Plastic 12V solenoid valve
- 2 no. Sensor c/w Flat 36mm steel bezel

Battery Powered (0.75 Bar - 10 Bar)

TPTS-B/HP/SS/F36/1 Tap Sensor kit

- 1 no. Battery-powered tap control box
- 1 no. 15mm G202 6V solenoid valve
- 1 no. Sensor c/w Flat 36mm steel bezel

TPTS-B/HP/SS/F36/2 Tap Sensor kit

- 1 no. Battery-powered tap control box
- 2 no. 15mm G202 6V solenoid valve
- 2 no. Sensor c/w Flat 36mm steel bezel

TAP SENSOR CONTROL KITS—TECHNICAL

Optional Purge Facility: Available on both mains- and battery-powered kits, "Purge Facility" allows you to set the tap to come on automatically if it has not been normally operated for more than a 24 hour period (to help prevent dead legs).

Optional Lock-Out Facility: Available on mains-powered kits only, "Lock-Out Facility" ensures the tap will stop working if it has been operated more than 4 times in 15 minutes (will automatically re-set itself after 15 minutes).

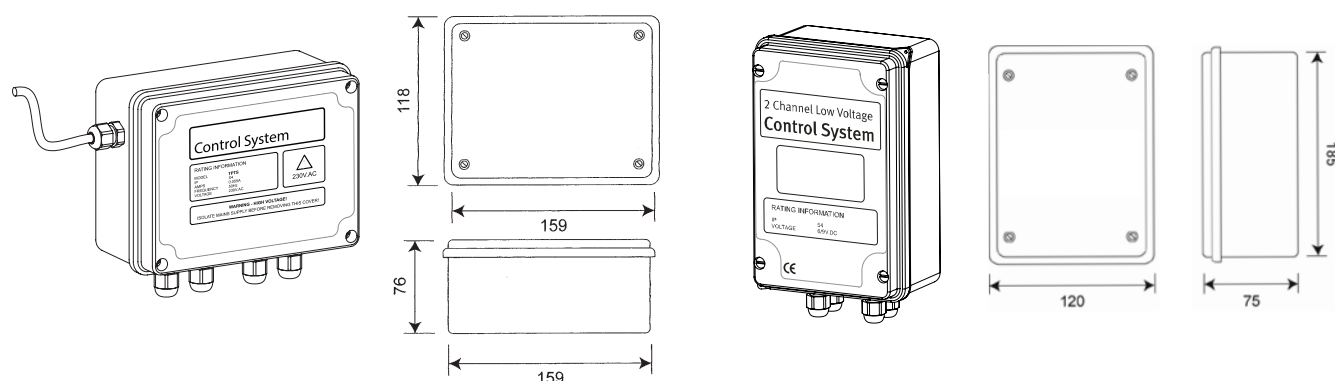
You can also set the system so you can activate the sensor once to turn the water on and then activate the sensor again to override the pre-set time and turn the water off immediately. It is possible to use 1 No. sensor to control 2 No. solenoid valves using a single control box.

If you require a longer sensing range (e.g. set to the length of the tap spout) or would like the sensor mounted directly below the tap spout you can choose our brushed stainless steel Programmable Tap Sensors with plain, blue or red inserts (to denote water temperature).

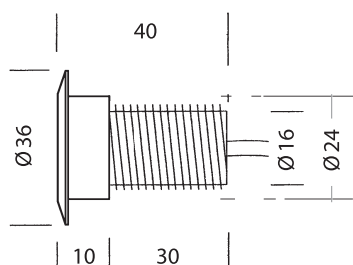
Control Box: Standard tap control box with adjustable valve open time from 6 seconds to 20 seconds. *Call to discuss* for options if you require a longer valve open time.

Mains powered: You need to provide a 3 amp fused spur.

Battery powered



Sensor: Ensure no bright lights (or reflected lights) are shining directly into sensor. If fitting sensor through a thick (e.g. brick) wall, we can supply extension threads. Standard pre-wired sensor c/w 3m cable. Longer cable lengths available. *Call to discuss.*



FLAT 36mm SENSOR

- Bezel diameter Ø36mm
- Overall length 40mm
- Thread length 30mm
- Thread material ABS Plastic
- Pre-wired YES
- Cable length 3m standard
- Finishes Brushed Steel
- Insert colour N/A

Please specify correct UK Water Reg 4 Solenoid Valves for your site conditions

For low pressure solenoid valves replace "HP" with "LP" in order codes. Very low pressure solenoid valves are only available for battery powered kits. Replace "HP" with "VLP" in order codes.

For mains powered kits

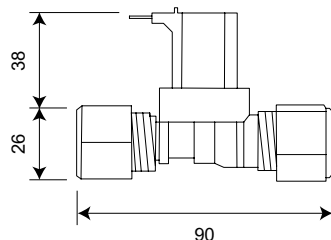
WRAS Approved

Standard high pressure (HP)

0.5 Bar – 6 Bar

12v nylon pre-wired 15mm solenoid valve for mains powered kits.

Electrical connection: Spade connectors / 2-core Ø0.5mm copper cable



ORDER CODE

15mm 12v Plastic HP Valve

TECHNICAL DATA

Gross weight 0.215 kg
Material Nylon
Seal Material NBR (Nitrile)
Voltage 12vDC
Power 3W
Connection 15mm compression
Pressure rating 0.5 Bar – 6 Bar
Operation type Normally closed
Cable length 3m

The WRAS approval for this valve has lapsed. It is currently with WRAS for re-testing.

WRAS Approved

Optional low pressure (LP)

0 Bar – 0.5 Bar maximum

12v (6.7mm orifice) solenoid valve for mains powered kits.

You will need to provide length of 2 core cable from valve to control box.

ORDER CODE

15mm 12v (6.7mm) Valve

TECHNICAL DATA

Material ABS/Brass
O-ring/washers Nitrile
Pressure rating 0 Bar – 0.5 Bar max.
Orifice 7.1mm
Connection 15mm compression
Voltage 12vDC
Operation type Normally closed

For battery powered kits

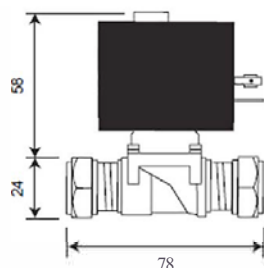
Kiwa (KUKreg4)

Standard high pressure (HP)

0.75 Bar – 10 Bar

6v non-wired G202 solenoid valve for battery powered kits.

You will need to provide length of 2 core cable from valve to control box.



ORDER CODE

15mm 6v G202 Valve

TECHNICAL DATA

Material ABS/Brass
O-ring/washers Nitrile
Pressure rating 0.75 Bar – 10 Bar
Orifice 12.7mm
Connection 15mm compression
Voltage 6vDC
Operation type Latching

WRAS Approved

Optional low pressure (LP)

0 Bar – 1.5 Bar maximum

6v (4mm orifice) solenoid valve for battery powered kits.

You will need to provide length of 2 core cable from valve to control box.

ORDER CODE

15mm 6v (4mm) Valve

TECHNICAL DATA

Material ABS/Brass
O-ring/washers Nitrile
Pressure rating 0 Bar – 1.5 Bar max.
Orifice 4mm
Connection 15mm compression
Voltage 6vDC
Operation type Latching

WRAS Approved

Optional very low pressure (VLP)

0 Bar – 0.5 Bar maximum

6v (6.7mm orifice) solenoid valve for battery powered kits.

You will need to provide length of 2 core cable from valve to control box.

ORDER CODE

15mm 6v (6.7mm) Valve

TECHNICAL DATA

Material ABS/Brass
O-ring/washers Nitrile
Pressure rating 0 Bar – 0.5 Bar max.
Orifice 6.7mm
Connection 15mm compression
Voltage 6vDC
Operation type Latching



ROBERT PEARSON & COMPANY LTD

Post Office House, Post Office Lane
Stockton, Warminster
Wiltshire BA12 0SE

Telephone: (01985) 850954

Facsimile: (01985) 850112

E-Mail: sales@robertpearson.co.uk

Website: www.robertpearson.co.uk