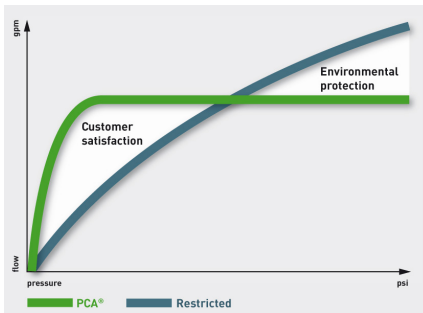


Caché model combined aerator and flow regulator

NO PLUMBING REQUIRED | WATER & ENERGY SAVING | EVEN WATER DISTRIBUTION

Simply replace existing tap aerator or flow straightener. The CACHÉ® insert is screwed directly into the tap eliminating the need for a housing

Neoperl Caché® Aerator | PCA® (Pressure Compensating) Model



Water consumption: as much as necessary (customer satisfaction), but only as little as possible (environmental protection).

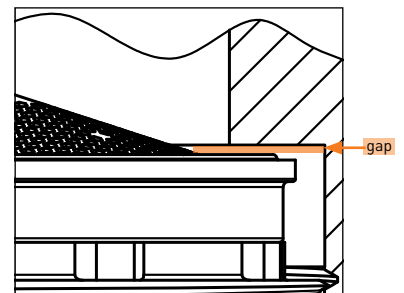
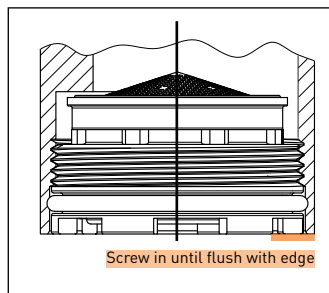
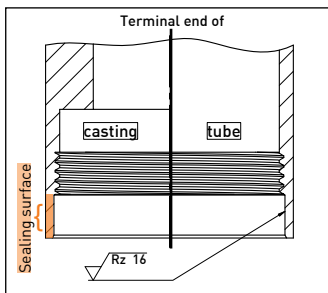
PCA® versions provide a constant & maximum flow rate irrespective of pressure fluctuations

All Neoperl PCA® inserts are equipped with a flow regulator. The flow regulator is composed of a **colour-coded body** and a **dynamic o-ring**. The o-ring reacts to pressure change and alters its shape to adjust the amount of water flowing through the flexible gap.

Operating water pressure 1 Bar to 6 Bar

Where flow rates are stated in gallons/min (**gpm max.**) this refers to a US gallon (3.8 litre/min approx.) and the flow rate will not exceed that stated providing the water pressure is correct. Where flow rates are stated in litres/min (**l/min**) this is subject to $\pm 10\%$ deviation.

May not be used for hot water application exceeding 60°C



Due to radial sealing, make sure aerator is not screwed in to the limit but until CACHÉ® aerator is flush with edge. For pressure resistance reasons thread must be true to gauge.

Caché Service Key

Order Codes:

- RP/CACHE/KEY/TT
- RP/CACHE/KEY/TJ
- RP/CACHE/KEY/JR
- RP/CACHE/KEY/STD

Approximate size guide for caché service keys:
Yellow (TT) = 16mm, Green (TJ) = 18mm
Red (JR) = 21mm, Grey (STD) = 24mm



PCA® Model – Pressure Compensating CACHÉ Aerator

The pressure compensating flow regulator produces – by means of the o-ring – an almost constant flow rate regardless of pressure fluctuations

RP/CACHÉ Cascade-SLC | Pressure Compensating Flow Regulator & Aerator

SLC (SMART LIME CLEANING)

For maximum lifespan of your tap aerator. All the features of Cascade® + maximum lime resistance. No need to remove the aerator for cleaning.

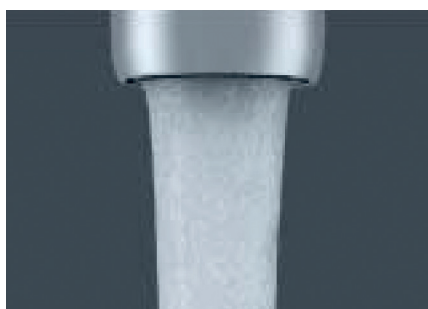
NEOPERL® AERATORS

- control the stream straightness and diameter
- reduce splash by aerating the stream and eliminating side spray
- save water and reduce energy costs
- meet local plumbing codes and standards



CASCADE® SLC FEATURES

- maximum lime resistance
- no need to remove the aerator for cleaning
- perfect stream quality
- very low noise level
- damage proof: unlike conventional wire mesh screens, the CASCADE® SLC structure cannot be crushed
- integrated anti-clogging dome screen filters sediments and particles



Available Sizes

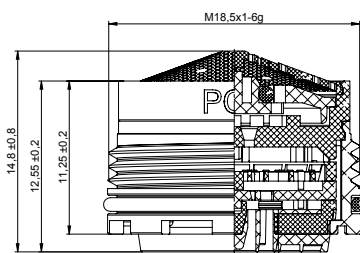
Standard (STD) – M24

Junior (JR) – M21.5

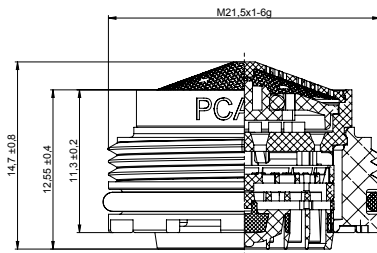
Tiny Junior (TJ) – M18..5

Available Sizes—Cascade® SLC Caché® for water pressure 1 bar – 6 bar

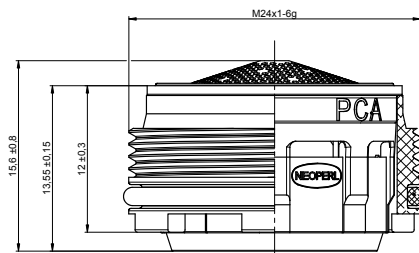
Caché Inserts			Order Codes		
Flow Rate Litres/min (± 10%)	Flow Rate: US Gallons/min	Colour Code	M18.5 Tiny Junior (TJ)	M21.5 Junior (JR)	M24 Standard (STD)
	1.0 gpm max.	Blue	–	–	RP/40.0258.010
	1.2 gpm max.	Pink	–	–	RP/40.0260.010
5.0 l/min		Orange	RP/43.0251.010	RP/42.0251.010	RP/40.0251.010
	1.5 gpm max.	Green	RP/43.0256.010	RP/42.0256.010	RP/40.0256.010
6.0 l/min		Black	–	–	RP/40.0252.010
	1.75 gpm max.	Light Blue	RP/43.0261.010	RP/42.0261.010	RP/40.0261.010
7.0 l/min		Light Green	RP/43.0255.010	RP/42.0255.010	RP/40.0255.010
	2.0 gpm max.	Lilac	RP/43.0257.010	RP/42.0257.010	RP/40.0257.010
	2.2 gpm max.	Yellow	RP/43.0253.010	RP/42.0253.010	RP/40.0253.010
8.0 l/min		White	RP/43.0254.010	RP/42.0254.010	RP/40.0254.010



M18.5 Tiny Junior (TJ) Dimensions



M21.5 Junior (JR) Dimensions



M24 Standard (STD) Dimensions

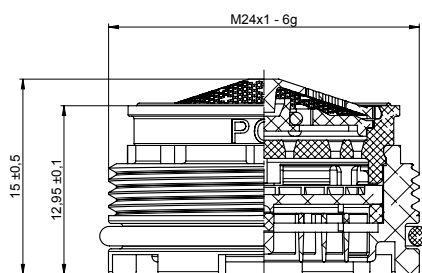
PCA® Model – Pressure Compensating CACHÉ Aerator

The pressure compensating flow regulator produces – by means of the o-ring – an almost constant flow rate regardless of pressure fluctuations

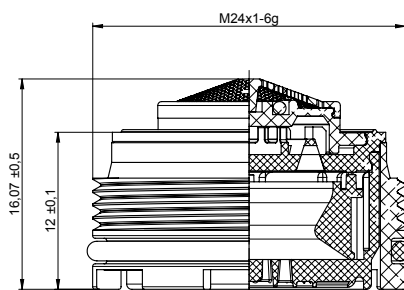
RP/CACHÉ Cascade | Pressure Compensating Flow Regulator & Aerator

STD Cascade® Caché for water pressure 1 bar – 6 bar

LF (Low Flow) Caché Inserts		Order Codes	
Flow Rate L/min (± 10%)	Flow Rate: US Gallons/min	Colour Code	M24 Standard (STD)
	0.35 gpm max.	Brown	RP/40.1268.010
	0.5 gpm max.	Lime	RP/40.1259.010
Caché Inserts		Order Codes	
Flow Rate L/min (± 10%)	Flow Rate: US Gallons/min	Colour Code	M24 Standard (STD)
	1.0 gpm max.	Blue	RP/40.1258.010
	1.2 gpm max.	Pink	RP/40.1260.010
5.0 l/min		Orange	RP/40.1251.010
	1.5 gpm max.	Green	RP/40.1256.010
6.0 l/min		Black	RP/40.1252.010
	1.75 gpm max.	Light Blue	RP/40.1261.010
7.0 l/min		Light Green	RP/40.1255.010
	2.0 gpm max.	Lilac	RP/40.1257.010
	2.2 gpm max.	Yellow	RP/40.1253.010
8.0 l/min		White	RP/40.1254.010



M24 Standard (STD) Dimensions



M24 Standard (STD) LF Dimensions



CASCADE® FEATURES

- extended life
- perfect stream quality even under difficult flow conditions
- very low noise level
- damage proof: unlike conventional wire mesh screens, the HONEYCOMB structure cannot be crushed
- integrated anti-clogging dome screen filters sediments and particles



ROBERT PEARSON & COMPANY LTD

Post Office House, Post Office Lane
Stockton, Warminster
Wiltshire BA12 0SE

Telephone: (01985) 850954

Facsimile: (01985) 850112

E-Mail: sales@robertpearson.co.uk

Website: www.robertpearson.co.uk