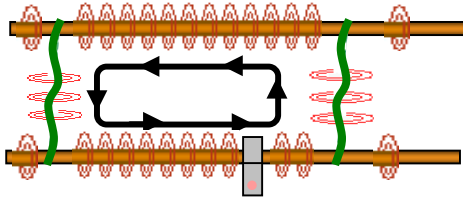
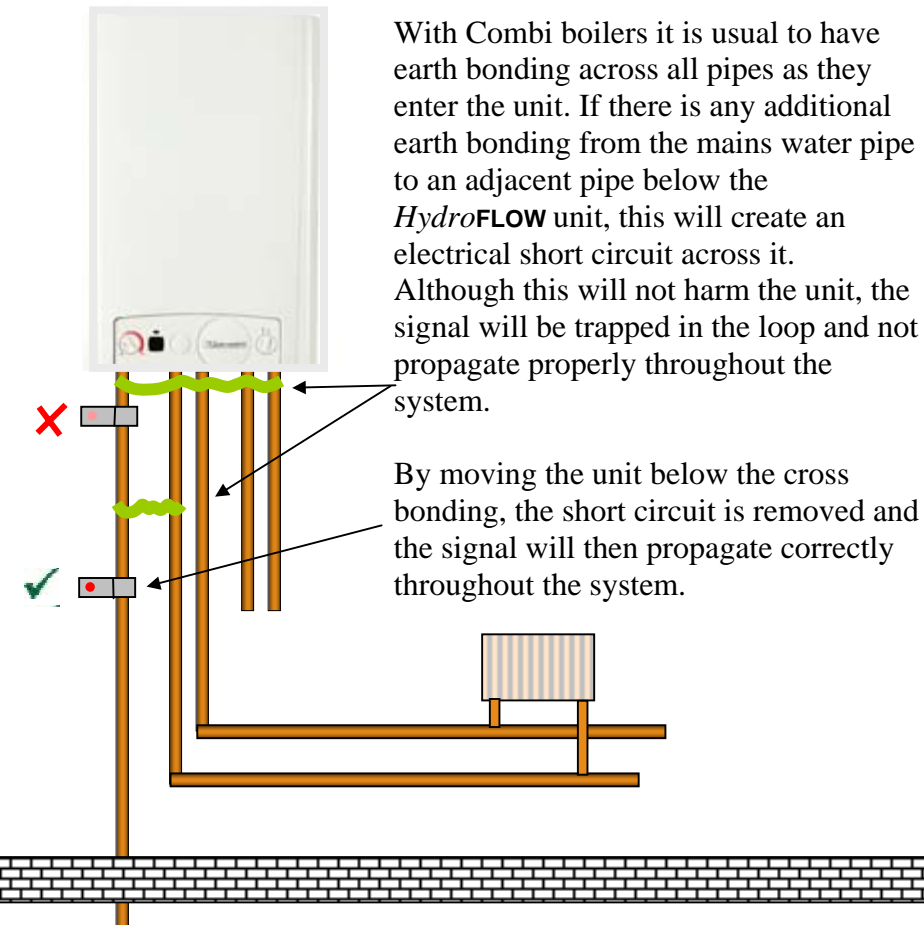
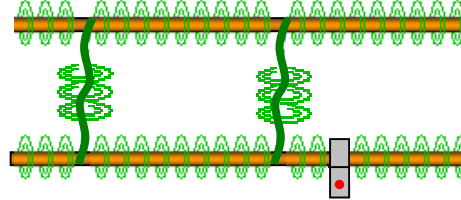


Explanation of an electrical loop or short circuit

This is an electrical loop, the signal does not propagate correctly and is trapped in the loop



By moving the unit to a different location, out of the loop, the signal propagates throughout the system.



With Combi boilers it is usual to have earth bonding across all pipes as they enter the unit. If there is any additional earth bonding from the mains water pipe to an adjacent pipe below the *HydroFLOW* unit, this will create an electrical short circuit across it. Although this will not harm the unit, the signal will be trapped in the loop and not propagate properly throughout the system.

By moving the unit below the cross bonding, the short circuit is removed and the signal will then propagate correctly throughout the system.

Cross bonding between pipes

With open vented systems, (cylinder in the airing cupboard with a tank in the loft), there is often cross bonding between the pipes. For the same technical reasons as with the Combi boiler it is possible to fit the unit in an electrical loop (short circuit).

