

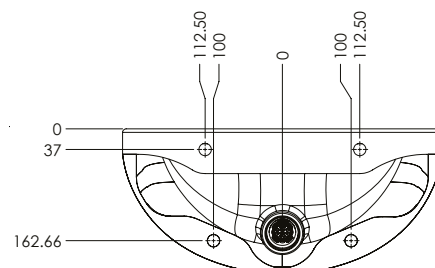
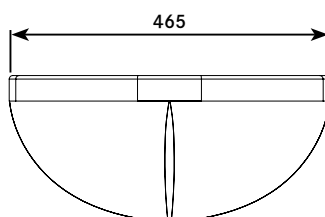
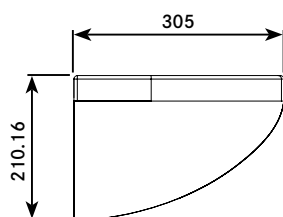
HIGH SECURITY LOW PROFILE BASIN—2 TAP HOLE

Concealed rear waste outlet • Wave-on or tactile controls available

Please confirm total wall thickness as you may require fixing kit c/w optional extension threads
Basins do not include spouts or sensor / touchpad controls. These need to be ordered separately.



Order Code: HSWHB-LP-2TH



HSWHB-LP-2TH

TECHNICAL DATA

Gross weight	7.95 kg
Overall dims	465mm (w) x 210.16mm (h) x 305mm (d)
Type of mounting	4 x M12 stainless steel threaded
Material	GRP / Polyester gel coat
Waste grid	Stainless steel anti-ligature design
Waste outlet	Requires 1¼" (32mm) running trap
Fixing kit	For wall thickness up to 200mm as standard



ROBERT PEARSON & COMPANY LTD

Post Office House, Post Office Lane
Stockton, Warminster
Wiltshire BA12 0SE

Telephone: (01985) 850954
Facsimile: (01985) 850112
E-Mail: sales@robertpearson.co.uk
Website: www.robertpearson.co.uk